



# Earthquake Safety and Emergency Response Bond Program 2010 & 2014

## Quarterly Status Report March 2017

Edwin M. Lee  
Mayor

Mohammed Nuru  
Director

**Edgar Lopez**  
Deputy Director  
and City Architect

Building Design & Construction  
30 Van Ness Ave., 4th floor  
San Francisco, CA 94102  
tel 415-557-4700

[sfpublicworks.org](http://sfpublicworks.org)  
[facebook.com/sfpublicworks](https://facebook.com/sfpublicworks)  
[twitter.com/sfpublicworks](https://twitter.com/sfpublicworks)



*OCME SE Building view from Jennings*



*FS 16 Demolition*



*FS 15 Apparatus Bay Door Replacement*

Prepared for the:

- Office of the Chief Medical Examiner
- San Francisco Fire Department
- San Francisco Police Department
- Public Utilities Commission

Submitted by  
Charles Higuera, FAIA  
Program Manager



# Earthquake Safety and Emergency Response Bond Program (ESER 2010 & 2014)

---

## Table of Contents

Table of Contents.....	1
Executive Summary .....	1
ESER 2010.....	1
ESER 2014.....	3
Program Summary and Status .....	6
Public Safety Building .....	6
Neighborhood Fire Stations (ESER 2010) .....	8
Neighborhood Fire Stations (ESER 2014) .....	14
Emergency Firefighting Water System .....	23
Office of the Chief Medical Examiner (OCME) (ESER 2014) .....	27
Traffic Company & Forensic Services Division (ESER 2014) .....	31
Police Facilities .....	32
Budget, Funding and Expenditures .....	39
ESER 2010.....	39
ESER 2014.....	40
Attachment 1 – Contact Information.....	41
Attachment 2 – Financial Summary .....	42
Attachment 3 – Component Schedules .....	48
Attachment 4 – Encumbrance and Spend-Down Schedules.....	49



## Executive Summary

### ESER 2010

The Earthquake Safety and Emergency Response (ESER 2010) Bond Program consists of three components: the **Public Safety Building (PSB)**, the **Neighborhood Fire Stations & Support Facilities (NFS)**, and the **Emergency Firefighting Water System (EFWS)**. The final projects in the bond are proceeding apace, hewing to stipulated schedules and budgets. To date, there have been no upsets that would seriously compromise client department's expectations for the successful delivery of any project.

The following is a brief summary of each component's status.

#### Public Safety Building

Public Works construction management staff continues to assist client users in addressing warranty items. Punchlist work is expected to continue through Final Completion in May 2017.

Project Cost, inclusive of all construction change orders to-date, is tracking within the total project budget of \$243M.

#### Neighborhood Fire Stations & Support Facilities

##### Seismic Projects: Station 16 and Station 5

**Station 16:** Notice to Proceed was issued to Roebuck Construction on August 22, 2016. Demolition of station began on October 11, 2016 and is complete. Shoring and underpinning of adjacent properties is scheduled to occur during the months of March and April 2017.

**Station 5:** Public Works terminated the CM/GC contract for convenience on September 30, 2016. An RFQ for General Contractor services was issued on October 18, 2016. Five (5) firms were pre-qualified and invited to submit bids. Three (3) bids were received on December 16, 2016. Due to bid protest, the project was re-bid. Three (3) bids were received on February 1, 2017. The low bidder, Alten Construction was awarded the \$14.8M contract on February 21, 2017. Notice to Proceed was issued to on March 27, 2017. SFFD is scheduled to vacate the station by April 19, 2017, and hazardous materials abatement is to begin April 25, 2017.

# Earthquake Safety and Emergency Response Bond Program

(ESER 2010 & 2014)

## Comprehensive Projects: Station 36

**Station 36:** Project was successfully completed and SFFD reoccupied the station on November 19, 2014. The Fire Department requested two elements of work apart from the basic scope of FS36 – new apparatus bay doors and HVAC cooling in select South-facing areas identified post-occupancy. The new apparatus bay doors are installed. The HVAC work is in design and permitting, and work is anticipated to proceed summer 2017.

In addition, scope included rebuilding the driveway/apron. This work was designed applying lessons learned from new Fire Station #1 to avoid the damaging of the underside of fire apparatus, while remaining conformant to ADA standards for accessibility to ensure proper path of travel. This work is complete.

## Focused Scope Projects

Focused Scope portfolio is organized into six packages. All ESER 2010 Focused Scope work (roofing, exterior envelope, generator, shower, mechanical, and window) has been complete. Refer to the Neighborhood Fire Stations full report for further detail.

The Bond has earned savings on both cost of issuance resulting from packaging the bond sale with other bond programs, and from interest earned. The monies earned will be earmarked for Additional Focused Scope projects, resulting in a new ESER 2010 projects category. These projects will be identified during second quarter 2017 for execution of third quarter 2018.

## Emergency Firefighting Water System (aka Auxiliary Water Supply System - AWSS)

Construction continued for Cisterns E (WD-2746), Cisterns F (WD-2747), and Pumping Station 1 (WD-2686) contracts. The Candlestick Point and Columbus/Green pipelines were completed. Facilities assessments were completed. The Flexible Water Supply System projects were cancelled. The University Mound pump, Ingleside AWSS pipeline, and Sunset potable co-benefits pipeline projects were initiated.

## Budget

To date, the ESER 2010 has received the proceeds of six bond sales totaling \$412,300,000. The expenditures through March 2017 are \$340,568,067 of which \$230,423,704 is for the Public Safety Building; \$33,330,884 is for the Neighborhood Fire Stations; \$73,569,476 is for the Auxiliary Water Supply System; and \$3,244,033 is for Bond Cost of Issuance, Bond oversight and accountability expenses. The expenditures are consistent with our spend-down forecast and are within budget. The breakdown of the proceeds received to-date is discussed in the [Budget, Funding and Expenditures](#) section of this report.

### Executive Summary

#### ESER 2014

In June 2014, 79% of the voters approved Proposition A - Earthquake Safety and Emergency Response Bond 2014 (ESER 2014) for \$400M. ESER 2014 will pay for repairs that will allow San Francisco to quickly respond to a major earthquake or disaster.

The ESER 2014 is comprised of five components: **Office of the Chief Medical Examiner (OCME)**; **Traffic Company & Forensic Services Division (TCFSD)**; **Neighborhood Fire Stations (NFS)**; **Emergency Firefighting Water System (SFPUC)**; and **Police Facilities (PF)**. SFPUC will manage the Emergency Firefighting Water System component and Public Works will manage the remaining components.

#### Office of the Chief Medical Examiner

Clark Construction is providing CM/GC services for the OCME project; Final Completion is scheduled in August 2017.

KMD Architects are providing A/E services.

Vanir/Saylor, a Joint Venture Partnership, is providing supporting management services, mainly in the review of cost estimates, construction schedule, and other project related activities.

The project is anticipated to achieve LEED Gold certification.

Safety – no reportable accidents.

#### Traffic Company & Forensic Services Division

HOK Architects are providing A/E services.

Vanir/Saylor, a Joint Venture Partnership, is providing supporting management services, mainly in the review of cost estimates, construction schedule, and other project related activities.

The project delivery method is CM/GC with design-build Core Trade Subcontractors (mechanical, plumbing, electrical and curtain wall). A RFQ process has resulted in the short-listing of three teams led by the following construction firms:

1. Clark Construction Group
2. McCarthy Building Companies

# Earthquake Safety and Emergency Response Bond Program

(ESER 2010 & 2014)

## 3. Turner Construction Company

The RFP will be issued in May 2017.

The project is obliged to LEED Gold certification.

### Neighborhood Fire Stations

The ESER 2014 NFS program is comprised of three sub-components: *Focused Scope*, *Comprehensive*, and *Seismic projects*. Fire Chief Joanne Hayes-White approved the portfolio of 44 projects in April 2016.

Stations for each sub-component of work (Focused Scope, Comprehensive, and Seismic) have been identified. The early Focused Scope projects are organized into nine (9) packages: Apparatus Bay Doors, Roofing, Showers, Windows, Exterior Envelopes, Mechanical, Emergency Generators, Sidewalks, and Security Access.

**Station 35** – Delivery method has been identified as Design-Build and approved by Fire Administration. RFQ was issued on August 15, 2016. RFQ shortlist notification was issued on November 2, 2016. RFP was issued to the five pre-qualified proposers on February 2, 2017. Three proposers participated in the RFP Step 1 Design Competition, which was evaluated on March 23, 2017. Shortlist notification was issued on March 31, 2017, inviting the two highest scoring teams to participate in RFP Step 2.

**Pier 26** – Ancillary project for additional fire boat berthing: Construction contract with Vortex Marine Construction was certified on August 23, 2016. Notice to Proceed was issued to Vortex Marine Construction on August 29, 2016. Construction completed on March 14, 2017, except for fencing and electrical work.

### Police Facilities

**ADA Package 1:** Construction Completed.

**ADA Package 2:** Construction began January 2017 and is anticipated to be completed by May 2017.

**Northern Police Station Renovation:** Project was advertised and 3 bids were received in January 2017, due to various reasons the bids were rejected. The project was re-advertised with the MEP Package 1 as one single contract in February 2017, 4 bids were received for the combined project in March 29, 2017.

**MEP Package 1:** Project was advertised and 3 bids were received in January 2017, due to various reasons the bids were rejected. The project was re-advertised with the Northern



# Earthquake Safety and Emergency Response Bond Program

(ESER 2010 & 2014)

Police Station Renovation Project as one single contract in February 2017, 4 bids were received for the combined project in March 29, 2017.

**Ingleside Station Renovation:** Project was reviewed and approved by DBI on 3/10/2017.

**Park Police Station Renovation:** Project was reviewed by Planning Department; CEQA clearance was obtained on 3/27/2017.

**New Firearms Simulator Training Facility:** Existing trailer was demolished on week of 3/13/2017. Final drawings for the Site and Utility Package and Modular Building Package were completed on 3/13/2017. Building permit application and Coastal Zone Permit was submitted to the Building Department and Planning Department in March.

**Police Academy Renovation Project:** Design phase began 3/7/2017.

**MEP Package 2:** Design phase began 3/13/2017.

## Budget

The ESER 2014 budget is \$400,000,000 with an authorized appropriation \$210,200,403. The expenditures through March 2017 are \$87,016,902 of which \$44,063,301 is for the Office of the Chief Medical Examiner; \$22,554,289 is for the Traffic Company & Forensic Services Division; \$5,280,158 is for the Police Facilities; \$9,348,003 is for the Neighborhood Fire Stations; \$3,970,795 is for Emergency Firefighting Water System (EFWS); and \$1,800,356 is for Oversight, Accountability & Cost of Issuance.

The breakdown of the proceeds received is discussed in the [Budget, Funding and Expenditures](#) section of this report.

## Other Information

For more information, visit the ESER web site at [www.sfearthquakesafety.org](http://www.sfearthquakesafety.org).

## Program Summary and Status

### Public Safety Building



Photo © Tim Griffith, 2015

**Location:** Block 8 in the Mission Bay South Redevelopment Area. The block is bounded by Mission Rock, Third, and China Basin Streets.

**Project Description:** The Public Safety Building (PSB) is meant to provide a new venue for the SFPD Headquarters – effectively the command and control administration of the City’s police department-including the relocation of Southern District Station and a new Mission Bay Fire Station. Included in the project is the reuse of Fire Station #30, which will serve as a multi-purpose facility for the Fire Department and the community. Historic resource consultants have determined that the existing fire station is eligible for the National Register of Historic Places. Consistent with the Mission Bay SEIR Addendum No. 7, Mitigation Measures, Item D.02, this facility will be retained and reused in a manner that preserves its historic integrity. The other components of the project will be designed to be respectful of the historic integrity of the existing fire station.

# Earthquake Safety and Emergency Response Bond Program

(ESER 2010 & 2014)

Both the Police Headquarters and the Southern District Police station are located at 850 Bryant also known as the Hall of Justice. This facility is over 50 years old and does not meet current seismic codes and requirements. In the event of a major earthquake, this building is not expected to be operational. The PSB will provide a new venue for these two police elements that are a part of a larger strategy to replace the Hall of Justice, established in the City's Capital Plan as the *Justice Facilities Improvement Program (JFIP)* Police Investigations and associated property and evidence storage will remain at the Hall.

**Project Background:** The functionality of the entire police department in the event of a major catastrophe relies on the ability of the police leadership within police command center headquarters to promptly and properly coordinate public safety services in the city. The district station plays an equally critical role in providing responsive public safety to residents of San Francisco in a timely manner. This station includes those working the front line that are the first to arrive at a crime scene, maintain the peace during difficult situations, assist in the investigation of criminal activity; provide support to other first responders including the Fire Department and emergency medical services.

## Project Status:

Construction Activities:

- Completed

## Project Schedule:

SUBSTANTIAL COMPLETION: April 28, 2015

FINAL COMPLETION: October/ November 2015

FIRST DAY OF BUSINESS of POLICE/ FIRE STATIONS: March 30, 2015

FIRST DAY OF BUSINESS of POLICE HQ: April 13, 2015

BUILDING INAUGURATION: April 16, 2015

**Project Budget:** Project Cost, inclusive of all change orders to date, is tracking within the Total Project Budget of \$243M. Refer to the [Attachment 1 – Program Budget Report](#) for further detail.

### Neighborhood Fire Stations (ESER 2010)

**Project Description:** The ESER bond will renovate or replace selected fire stations to provide improved safety and a healthy work environment for the firefighters. The selected stations are determined according to their importance for achieving the most effective delivery of fire suppression and emergency medical services possible.

**Project Background:** All of the 42 San Francisco Fire Stations have, as a result of minimal deferred maintenance over decades, yielded building conditions that potentially compromise the safety and health of firefighters. Many stations have structural/seismic, and other deficiencies that could inhibit their continuous functionality. Some may not be operational after a large earthquake or other disasters, hindering the ability of the firefighters to respond to calls for service.

Prior to approval of the bond program, the majority of the City's fire stations and support facilities were generally assessed for their respective condition and to identify vulnerabilities or deficiencies that could compromise their essential role as deployment venues for first responders.

For budget planning purposes, the assessment reports were reviewed by cost estimators who prepared estimates of the cost of correcting the conditions noted in the assessments. The cost estimates indicate only the overall "order of magnitude" of the various facility deficiencies and relative proportions of various types of work.

Preliminary assessment of the neighborhood fire stations indicate that the sum of all existing deficiencies would require a budget exceeding \$350M to correct, significantly more funds than are available in this bond for such purposes. Therefore, additional detailed planning is required to focus the expenditures of this bond towards the most beneficial and cost effective immediate rehabilitation and/or improvement projects.

A list of projects to be completed by the ESER 2010 bond was identified by Public Works and the Fire Administration, and accepted by the Fire Commission at their meeting of September 23, 2010.

The ESER 2010 bond program is anticipated to complete improvements to 16 of the 42 neighborhood fire stations. The approved slate of projects was presented to the SF Fire Commission on April 26, 2012.

**Project Status:**

SFFD evaluated project scope and program budget options prepared by Public Works and approved on February 29, 2012 a final slate of Groups I, II and III projects to be completed as

# Earthquake Safety and Emergency Response Bond Program (ESER 2010 & 2014)

part of ESER 2010. The approved slate of projects was presented to, and accepted by, the SF Fire Commission on April 26, 2012.

## Seismic Projects: Stations 16 and 5

### Station 16:

Design services are being provided by Public Works BDC/IDC.

Invitation for Bids was advertised on April 26, 2016. Two bids were received on June 15, 2016, from Alten Construction and Roebuck Construction. Notice to Proceed was issued to Roebuck Construction on August 22, 2016. Demolition of station began on October 11, 2016. Shoring and underpinning work to take place during the months of March and April 2017.



Photo © Sean O'Brien, 2017

### Station 5:

Design services are being provided by Public Works BDC/IDC.

Public Works terminated the CM/GC contract for convenience on September 30, 2016. An RFQ for General Contractor services was issued on October 18, 2016. Five (5) firms were pre-qualified and invited to submit bids. Three (3) bids were received on December 16, 2016. Due to bid protest, the project was re-bid. Three (3) bids were received on February 1, 2017. The

# Earthquake Safety and Emergency Response Bond Program (ESER 2010 & 2014)

low bidder, Alten Construction was awarded the \$14.8M contract on February 21, 2017. Notice to Proceed was issued to on March 27, 2017. SFFD is scheduled to vacate the station by April 19, 2017, and hazardous materials abatement is to begin April 25, 2017.

A budget revision increase to reflect the delay in project construction start is in progress. Refer to Appendix 2 – Time and Schedule.



## **Fire Boat Station 35: (See ESER 2014 this report)**

Fire Boat Station 35 will occur within ESER 2014 Program, however, the pre-design and CEQA and environmental review costs of \$687,125 will reside under ESER 2010. The budget that was identified for Station 35 was funded by ESER 2010 and the Fire Facilities Bonds funds totaling \$17.M. The ESER 2010 funding will be used to offset Station 5 and 16. The Fire Facilities Bond funds will continue to supplement Station 35 under ESER 2014.

## **Equipment Logistics Center (ELC):**

The ELC project was identified after the passage of the bond – it was suggested as a project combining the Bureau of Equipment (BOE) and Emergency Medical Services (EMS). In this configuration, the sum total of functional program area makes it infeasible to occur at the current EMS venue at 1415 Evans; more significantly, the budget for such a project is not available within the ESER 2010 NFS funding.

SFFD requested that Public Works prepare a program analysis and cost estimate for the EMS apart from the BOE for consideration in the proposed 2016 SFDPH bond – which passed in November 2016. The analysis and prospective project at the location of FS9 was completed during this reporting period – see ESER 2014 for description of work in this regard.

# Earthquake Safety and Emergency Response Bond Program

(ESER 2010 & 2014)

## **Comprehensive Project: Station 36**

Project was successfully completed and SFFD reoccupied the station on November 19, 2014. The Fire Department requested two elements of work apart from the basic scope of FS36 – new apparatus bay doors and HVAC cooling in select South-facing areas identified post-occupancy. The new apparatus bay doors are installed. The HVAC work is in design and permitting, and work is anticipated to proceed summer 2017.

In addition, scope included rebuilding the driveway/apron. This work was designed applying lessons learned from new Fire Station #1 to avoid the damaging of the underside of fire apparatus, while remaining conformant to ADA standards for accessibility to ensure proper path of travel. This work is complete.

## **Focused Scope Projects**

Design services are being provided by Public Works BDC/IDC. Four (4) of the five (5) emergency generators are designed by GHD (an as-needed electrical engineering consultant.) The cost at completion reflects a savings of 13% which is being used to offset the costs for Station 36 and it supplements the Program-wide reserve by 81%. A budget revision to reflect these changes is in progress.

## **Roofs – 15 Stations**

Summary: The scope consists of installing new roofing systems and upgrading exhaust fans on fifteen (15) stations. 2011 Package (Stations 6, 38, 41 and 42), Package 1 (Station 28); Package 2 (Station 2); Package 3 (Stations 18, 40 and 31), Package 4 (Stations 15, 17, 26, and 32), and Package 5 (Stations 10 and 13) roofs. Per SFFD direction, the 2011 package and Package 2 were completed by JOC contractors, and the balance of the projects were bid out to C39 roofing contractors.

Detail: All work is complete.

## **Exterior Envelope (BBR) – 16 Stations**

Summary: The scope consists of paint and ancillary work to prevent water intrusion at sixteen (16) stations. Per SFFD direction, BBR executed the paint work at six (6) Stations, 6, 28, 38, 41, 42, and 49 while the remaining work, Package 4 (Stations 15, 32 and 40), Package 5 (Stations 10, 13, 17 & 26), and Package 6 (stations 2, 18 & 31) were bid out through Public Works public bidding process to B or C33 license contractors due to the complexity of scope at these stations.

Detail: All work is complete.

## **Emergency Generator Replacement – 5 Stations**

Summary: The scope consists of installing new Emergency Generators and related ancillary scopes of work at five (5) Stations 6, 12, 15, 17, and 21. Per SFFD direction, BBR executed the work at Station 15; a JOC contractor executed the work at Station 17; and Stations 6, 12 and 21 were bid through the Public Works public bidding process to C10 license contractors.

# Earthquake Safety and Emergency Response Bond Program

---

## (ESER 2010 & 2014)

Detail: Stations 6, 12, 15 and 21 were completed in 2014. Station 17 work was completed on December 11, 2015 and close-out reached in September 2016.

Detail: All work is complete.

### **Shower Reconstruction – 9 Stations**

Summary: The scope of work consists of installing new shower stalls including shower pans, shower heads, divider walls, glass doors, floor drains, p-traps, access panels, and ancillary scopes of works at nine (9) Stations, 6, 13, 15, 17, 18, 26, 38, 40 & 41. Station 6 was completed by BBR in July 2013. Station 15 was completed by JOC Contractor, Rodan Builder, in September 2013. Stations 13, 18, 26, 38, 40 & 41 were bid through the Public Works public bidding process to B license contractors. Stations 17 and 18 were put on hold by SFFD due to scope complexity.

Detail: All work is complete.

### **Mechanical Scope (JOC) – 15 Stations**

Summary: The scope is structured into two phases: Phase 1 – Investigation and Scope Validation, and Phase 2 – Execution of Work. The stations were divided into two groups, Group 1 – four (4) stations and Group 2 – eleven (11) stations. Group 1 (Stations 6, 17, 38 and 42) had an NTP issued on May 24, 2013. The stations were substantially completed in August 2013, and final completed by Azul (JOC Contractor) in November 2013. Group 2 (Stations 2, 10, 13, 15, 18, 26, 28, 31, 32, 40, 41) were awarded to Rodan (JOC Contractor). NTP was issued on December 16, 2013. Work started on January 2, 2014, and reached final completion in November 2014.

Detail: All work is complete.

### **Window Repair (BBR) - 12 stations**

Summary: The scope consists of installing new latch, handle, weep holes, sealant and weather-strip to existing windows, replacing broken panes of glasses, and adjusting alignment and resealing the perimeter of the frame to water tight at twelve (12) Stations, 2, 6, 17, 25, 26, 28, 31, 32, 38, 40, 41 and 42. BBR was selected to perform the work per SFFD direction. The first Package including Stations 28, 38, 41 and 42 started in April 2012 and completed in June 2012; the second package including Stations 6, 17, 32 and 40 began in April 2013 and finished in June 2013; and the third package including Stations 2, 25, 26 and 31 started construction in November 2013, and completed in January 2014.

Detail: All work is complete.

### **Historic Evaluation and Environmental Review**

Summary: CEQA reviews and approvals proceed apace coordinated with the overall design and construction schedule.



# Earthquake Safety and Emergency Response Bond Program

---

(ESER 2010 & 2014)

Detail: Historic evaluation site visits were completed at 21 stations (14 Focused Scope / Alternate stations; 6 Seismic / Comprehensive stations; and the Fire Boat station.)

**Project Budget:**

Refer to the [Attachment 1 – Program Budget Report](#).

Earthquake Safety and Emergency Response Bond Program  
(ESER 2010 & 2014)

Neighborhood Fire Stations (ESER 2014)



*Pier 26 Fire Boat Berths – under construction*



*FS 3 Roof, HVAC and Generator Replacement – under construction*

# Earthquake Safety and Emergency Response Bond Program (ESER 2010 & 2014)



*FS 15 Apparatus Bay Door Replacement – complete*

## **Projects' Description:**

The ESER 2014 bond program continues the work of ESER 2010 bond, categorizing projects according to the three categories of Focused Scope, Comprehensive, and Seismic. The ESER 2014 bond program will continue to address identified and prioritized needs at Fire Stations that were previously not addressed under the 2010 program. Significant construction projects will have been completed at all SFFD Fire Stations at the conclusion of the 2010 and 2014 bond programs.

## **Project Status:**

20 stations were assessed in first quarter 2015 to confirm scope needs per station. Cost estimation has been provided by consultant Saylor and Associates in second quarter 2015. SFFD endorsement of the ESER 2014 NFS program, i.e., scopes of work approved at each station is anticipated in the first quarter 2016. The preliminary recommended portfolio of project for ESER 2014 NFS was presented to the SFFD on September 30, 2015. SFFD asked that the proposed project be presented within the context of the entire scope of work anticipated for all facilities. It was suggested to revise the format presented for the ESER 2010 bond portfolio for consistency.

# Earthquake Safety and Emergency Response Bond Program

(ESER 2010 & 2014)

As-needed consultant Page and Turnbull, the expert Historic resource architect, performed historic evaluation assessments in April and compiled a historic evaluation draft report to Public Works for review and comment in September. Page and Turnbull has incorporated the city comments and forwarded the revised report to DBI Planning in October for an initial review and approval. DBI returned with comments and required the submittal of an environmental application (EEA) for the projects before the report can be reviewed. The application will be submitted to DBI in the first quarter of 2016.

After receipt of bond funding in October 2014, the NFS team moved forward with planning of initial (i.e. prior to the identification of the entire portfolio) Focused Scope projects: first apparatus bay doors, roof replacements, shower renovation, exterior envelope, windows, sidewalk, emergency generator, and mechanical projects. Design began in January 2015 as scheduled. In the second quarter, the first array of projects were advertised or assigned to PUBLIC WORKS Bureau of Building Repair to provide pricing for review prior to commencement of work *Immediate Focused Scope Projects*

Design services are being provided by Public Works BDC (architecture) /IDC (engineering). As-needed engineering consultant GHD is working on the generator projects as well as on the Station 3 mechanical and emergency generator.

- Apparatus Bay Doors
  - Package 1 (FS 15):  
The scope is to install new apparatus bay doors at Fire Station 15. This is a pilot project with performance level drawings and specifications. Substantial completion issued on 10/26/16 and final completion issued on 11/7/16. Project is closed out.
  - Package 2 Ancillary Work (FS 6, 9, 10, 11, 17 & 38):  
The scope is to relocate or modify the existing Ancillary works in conflict with the new app bay door installation at 6 stations.

Public Works has scoped all six (6) sites between 3/21/17 and 3/28/17 to determine what ancillary work is required in preparation for the app bay door replacements at each station. BBR is in the process of providing proposals for Ancillary Work at FS's 6, & 38, and these are under review by the PM. BBR is in the process of providing proposals for FS's 9, 10, 11, and 17. Once the proposals are approved, BBR will commence with ancillary work at FS's 6 & 38 in early April and complete by early May. The remaining (4) stations will be completed in time for the app bay door installations in November 2017.

# Earthquake Safety and Emergency Response Bond Program

(ESER 2010 & 2014)

- Package 3 (FS 6, 9, 10, 11, 17 & 38):  
The scope is to replace and install new bi-fold app bay doors at the 6 stations. The design team completed the bid documents on 3/17/17. Package 3 bi-fold doors will go out to bid by the end of April 2017
  
- Package 4 (Stations TBD):  
The scope is to replace and install new app bay doors at 28 additional stations. The work plan was presented to SFFD on 9/26/16. The PM and Architect have visited each station, and the architect has prepared a diagram, identified conflicts, and determined recommended door replacement type. The site visits were completed in March 2017. Stations will be packaged together based on door type, special conditions, and geographic location.
  
- Roof
  - Package 1 (FS 3 - Roof/HVAC/Generator Replacement):  
The scope is to replace and install the new roof, HVAC and emergency generator at Station 3. The original substantial completion date was scheduled for 7/29/16, but non compensable time extensions due to the permitting of the generator extended that date. A 30 calendar day non-compensable time extension for the fuel storage tank relocation to the roof was issued through Contract Change Order 1. An additional 25 calendar day non-compensable time extension for revised electrical work and additional roofing work was issued through Contract Change Order 2. The revised substantial completion date was 9/22/16, but will need to be extended again due to the remote fuel fill port. All other work not related to the fuel system was completed on 10/28/16.

On 8/29/16, the SFFD inspector was on site to test the new fuel piping, but rejected the location of the remote fuel fill port in the Apparatus Bay. The code requires the fill port to be located a minimum of 5 feet from any openings, so on 9/12/16, the project team had a subsequent site meet with SFFD inspector to discuss acceptable locations for the new fuel fill port. It was determined that the best location was behind the station on Cedar Street. The revised fuel piping and remote fill design were sent to the Contractor through ASI 16 on 10/6/16. The Contractor submitted their cost and time proposal for ASI 16 on 11/1/16. After multiple negotiations and revisions to the change order, the contractor provided a final revision on 2.1.17, reducing the CO 16 by 25%. After approval of the CO, the shop drawings for the final generator were completed by the Contractor and

# Earthquake Safety and Emergency Response Bond Program

(ESER 2010 & 2014)

submitted to BDI on March 3<sup>rd</sup>, 2017. At the intake of that permit application, the contractor was told that the generator permit had to undergo a historic review. City Planning issued a CatEx Modification, and the contractor resubmitted for the generator permit on 3.31.17.

- Package 2 (FS 40 - Roof Replacement In-kind):  
The scope calls for replacing the roof in-kind at Station 40. Project closed out.
- Package 3 (Not Used):  
Package not used.
- Package 4 (FS 3 & 17 immediate repair):  
All work complete by mid November 2015. Contractor's final payment was issued on 11/17/16 and project is closed.
- Roof Package 5, 6 & 7 were merged into a single bid package. The project was advertised on 3/3/17, and Addendum No. 2 was issued on 3/30/17. A bid walk is scheduled for 4/5/17. Bids are due on 4/12/17.
- Package 5 (Stations 43 - roof and mechanical upgrades):  
The scope for FS 43 is to remove and install new roof. FS 49, a storage and EMS facility, was removed from the bid package due to structural scope creep impacting the budget, and in consideration that FS 49 is in pre-planning for future replacement in the next 5-10 years.
- Package 5 (Previous Package 6) (FS 9, 20, 23 and 24):  
The scope of work includes replacement of roof at FS 20 and 23, and repairs of roof at FS 9 and 24. This Original Package 6 is now part of Package 5.
- Package 5 (Previous Package 7) (FS 29):  
The scope is to replace the roof and rooftop mechanical units at FS 29. This Original Package 7 is now part of Package 5.
- Showers
  - Package 1 (FS 13, 20, 22 & 34):  
The scope consists of renovating the existing showers at 4 stations. Final payment issued and project closed out.
  - Package 2 (FS 10, 17, 19 & 33)  
The scope is to renovate the existing showers at 4 stations. Per SFFD direction on 7/18/16, FS 10 was removed from the scope because FS 10 is

# Earthquake Safety and Emergency Response Bond Program

---

## (ESER 2010 & 2014)

being used as swing space for FS 5 while they it is under construction. The Categorical Exemption is complete and the documents are permitted. This project is expected to bid during the summer of 2017, following the receipt of hazmat testing and bid-ready reports.

- Windows
  - Package 1 (FS 9, 19, 25 & 29):  
BBR was selected to perform the work per SFFD direction. Package 1 is closed out.
  - Package 2 (Not Used):  
Package not used.
  - Package 3 (Not Used):  
Package not used. FS 25 of Package 3 had moved to Package 1, as indicated in the report above.
  - Package 4 (FS 8, 20 & 21):  
Package 4 which includes Stations 8, 20, and 21 is closed out.
  - Package 5 (FS 14, 33, 37 & 43):  
BBR was selected to perform the work per SFFD direction. FS 14 and 37 are completed and closed out. BBR commenced work on FS 43 on 3/15/17 and will complete work by 5/1/17. FS 33 will commence after 5/1/17 and is expected to be completed over the summer of 2017. FS 43 and 33 are the final window projects in the Focused Scope Program.
  - Package 6 (FS 11, 12 & 23):  
FS 11, 12 & 23 window work completed and closed-out.
- Exterior Envelopes
  - Package 1 (FS 8, 20 & 23):  
The scope includes new paint and power wash to exterior facade of the stations. BBR was selected to perform the work per SFFD direction. SFFD directed Public Works on 4/25/16 to put FS 8 Exterior Envelope on hold until the commercial mid-rise building that is under construction currently adjacent to FS 8 is complete which may be 1 year or longer away from April 2016. FS 20 & 23 are on hold until the roofing scope is complete at these stations. No work shall proceed until further notice.
  - Package 2 (FS 24 & 34):

# Earthquake Safety and Emergency Response Bond Program

(ESER 2010 & 2014)

The scope of work consists of restoration of select exterior façade elements including brick re-pointing and limited replacement, lintel repair and re-coating, replacement of damaged glazing, repainting of stucco in select areas, replacement of parapet finishes (FS 24 only), limited flashing repair, and replacement of metal guard at FS 34. The Historical Conservation Consultant provided their recommendations for repairs of the brickwork and windows in their final report on 1/31/17. BDC and PM visited the sites on Monday, February 27<sup>th</sup> to look at existing conditions. A pre-planning meeting was scheduled with the Regulatory Affairs and the City historic planner on 3/22/17, and a CEQA submittal is scheduled for 4/12/17.

- Package3 (FS 11 & 29):  
The scope of work includes repair deficiencies at the exterior envelope of the stations, power wash all surfaces, and prepare substrates required to receive new paint at the exterior façade for FS 11 & 29. This project is on hold until the roofing scope is complete at these stations. No work shall proceed until further notice.
- Package 4 (FS 22):  
The scope includes roofing, exterior envelope, waterproofing, and window repairs. BDC Arch are working on their 50% CDs incorporating the waterproofing consultant's recommendations due in December.
- Mechanical
  - Package 1 (8, 9, 14, 20 & 41):  
Per discussion with BBR on 4/28/16, BBR team may be able to diagnose and improve the rooftop mechanical units at various stations. PM met with BBR on 9/23/16 to discuss work logistics and plan. PM confirming mechanical scope of work at each station and then will schedule site walks with BBR after winter.
- Emergency Generators
  - Package 1 (FS 31):  
The scope is to replace the existing emergency generator and ancillary work at FS 31. PM contacted GHD to provide engineering services for all generator packages. A site visit with GHD's electrical engineer held on 11/1/16. The engineer is preparing the proposal and PM is reviewing the generator assessment reports.
  - Package 2 (FS 14)  
The scope is to replace the generator vent only. This package's design will be grouped together with Package 1 design.



# Earthquake Safety and Emergency Response Bond Program

---

## (ESER 2010 & 2014)

- Package 3 (FS 24)  
The scope is to replace the generator housing only. This package's design will be grouped together with Package 1 design.
- Package 4 (FS 37)  
The scope is to replace the generator housing only. This package's design will be grouped together with Package 1 design.
- Sidewalks/Slabs
  - Package 1 (FS 13):  
The street and sidewalk replacement at FS 13 was declared as an urgent repair on July 10, 2015 due to serious bottoming out situation of the fire truck. Project closed out.
  - Package 2 (FS 31):  
The scope is to remove the brick in the affected area, remove/replace/recompact the sub-grade, install a structural concrete mat on the re-compacted soil, and re-install with brick to match surrounding at the floor slab by the app bay door at FS 31. Project is closed out.
  - Package 3 (FS 26):  
The scope is to remove and repair the apron/driveway outside the app bay doors. Project is closed out.
  - Package 4 (FS 20)  
The scope is to repair the apron/driveway outside the fire station. SFFD and PM team are confirming project scope.
- Access Control Systems
  - The scope is to provide electronic access control systems via card key at all exterior person-doors at all fire stations, including providing new or replacement of door hardware and electronic power systems as needed. The project is managed by SFFD with ESER funding. No direct PUBLIC WORKS involvement.

### **Hose Tower Removal & Roofing at FS 11, 12, 15, 21, & 38**

Fire Station 38 has been added to this package at the recommendations of the structural engineer. The scope of work is to remove existing hose towers and replace/improve existing roofs. Planning Department has not provided a response to the EEA submitted on 8/17/16 and response is now anticipated in December. Regulatory Affairs anticipates

# Earthquake Safety and Emergency Response Bond Program

(ESER 2010 & 2014)

Planning will require a Negative Declaration to be prepared, this process will take 9 months. 100% CDs are expected at the end of May 2017.

## **Fire Boat Station 35**

RFQ was issued on August 15, 2016. RFQ shortlist notification was issued on November 2, 2016. RFP was issued to the five pre-qualified proposers on February 2, 2017. Three proposers participated in the RFP Step 1 Design Competition, which was evaluated on March 23, 2017. Shortlist notification was issued on March 31, 2017, inviting the two highest scoring teams to participate in RFP Step 2.

## **Pier 26 Fire Boat Berths**

Construction contract with Vortex Marine Construction was certified on August 23, 2016. Notice to Proceed was issued to Vortex Marine Construction on August 29, 2016. Construction completed on March 14, 2017, except for fencing and electrical work.

## **Bureau of Equipment and Emergency Medical Services**

SFFD requested Public Works to prepare a program analysis and cost estimate for the Bureau of Equipment (BOE) and the Emergency Medical Services (EMS) for consideration as a project or projects to be funded by ESER 2014.

Public Works completed program analysis and conducted test fits of for the EMS Facility at four locations. The optimal site was found to be a consolidation of two properties owned by the City, the equipment yard located behind Fire Station No. 9, at 2245 Jerrold Ave., combined with an adjacent vacant railroad right-of-way that extends from Jerrold Avenue to McKinnon Avenue. The budget for the EMS Facility is \$44M, for a project scheduled to be completed in 2020.

During the capital project prioritization and planning phase of ESER 2014, SFFD decided that, due to other high priority capital needs, the EMS Facility project could not be included in the list of projects to be constructed by ESER 2014. The EMS Facility project was deferred to Public Health and Safety Bond which was approved by the voters in November 2016 under the new project name of Ambulance Deployment Facility (ADF).

Public Works completed program analysis and conducted test fits of for the BOE Facility at two locations. The optimal scenario was found to be renovation of the existing SFFD facility at 1415 Evans, which would become feasible after EMS/ADF is relocated to another facility. Therefore, further work on the BOE Facility project is deferred to a subsequent capital program yet to be determined.

Earthquake Safety and Emergency Response Bond Program  
(ESER 2010 & 2014)

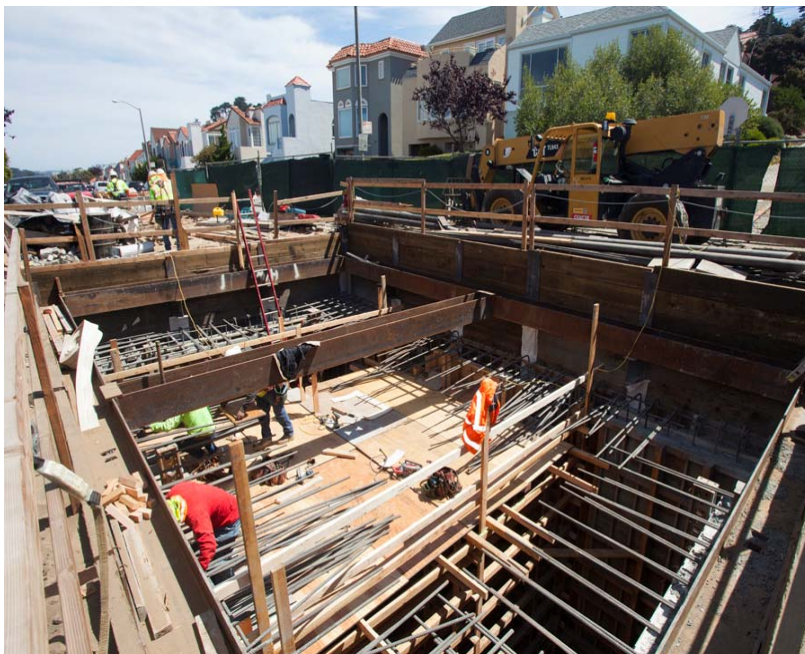
Emergency Firefighting Water System



Laguna Honda Hospital cistern



18th Avenue & Moraga Street cistern



17<sup>th</sup> Avenue & Pacheco Street cistern, June 2016

### **EMERGENCY FIREFIGHTING WATER SYSTEM**

**Program Description:** The Earthquake Safety and Emergency Response Bonds will seismically improve the Emergency Firefighting Water System cisterns, pipelines, tunnels, and physical plant.

**Program Background:** The Emergency Firefighting Water System is vital for protecting against the loss of life, homes, and businesses from fire following an earthquake. It is also used for the suppression of non-earthquake multiple-alarm fires.

#### **Status:**

##### **Planning and Design**

1. 19th Avenue Pipeline – Install new 20” Auxiliary Water Supply System (AWSS) pipe on 19<sup>th</sup> Avenue from Irving Street to Kirkham Street as part of Public Works’ 19<sup>th</sup> Avenue Roadway Improvements, Contract 2652J. Bid advertisement 8/2017.
2. Clarendon Supply – Provide a new AWSS water supply and pipe near the crest of Clarendon Avenue at Dellbrook Avenue. Design completion 3/2018.
3. Facilities Assessments – Assess tunnels and structures to guide future repairs and improvements. Completed 9/2016.
4. Fireboat Manifolds – Install new fireboat manifold and pipeline at Fort Mason Pier 2. Design completion 7/2017.
5. Flexible Water Supply System (FWSS) – All FWSS projects are cancelled due to logistical and operational issues. The FWSS projects were located at Lake Merced, McLaren Park Tanks, Sunset Reservoir, and various street intersections.
6. Ingleside Pipeline – Install new 20” AWSS pipe from Ocean Avenue towards Lake Merced. Alternatives analysis report completion 9/2017.
7. Lake Merced Pipeline– Install new 20” AWSS pipe from Lake Merced Pump Station to Vidal Drive / Higuera Avenue intersection. Conceptual engineering report completion 9/2017.
8. Pipeline Investigation and Remediation – Assess the 135-mile AWSS pipeline network condition using field investigations and probabilistic analysis. Recommend a long-term pipeline repair, replacement, and abandonment capital plan. Completion 4/2017.
9. Sunset Pipeline – Install new potable co-benefits pipeline from Sunset Reservoir. Schedule pending.

# Earthquake Safety and Emergency Response Bond Program

(ESER 2010 & 2014)

10. University Mound Pipeline – Install new 20” AWSS pipe from University Mound Reservoir to the existing 20” AWSS pipe at Third Street and Salinas Avenue. Design completion 11/2017.
11. University Mound Pump – Install new pump at University Mound Reservoir in conjunction with the University Mound Pipeline project. Conceptual engineering report completion 8/2017.

## Construction

1. Ashbury Bypass Pipeline – Install new 20” AWSS pipe near Ashbury Heights Tank as part of Public Works’ Clayton St, Clipper St, and Portola Dr. Pavement Renovation, Sewer Replacement and Water Installation, Contract 2500J. Bid advertisement 4/2017.
2. Candlestick Point Pipeline on Carroll Avenue – Install new 20” AWSS pipe on Carroll Avenue from Ingalls Street to Hawes Street. Construction completed 2/2017.
3. Cisterns – See following table.
4. Columbus/Green Pipeline – Replace AWSS pipe in the intersection of Columbus Avenue and Green Street as part of Public Works’ Columbus Avenue Pavement Renovation and Water Main Replacement, Contract 2267J(R). AWSS construction completed 11/2016.
5. Control System – Improve the AWSS control and telecommunications systems. Completion 8/2017.
6. Fillmore/Haight Pipeline – Replace AWSS pipe as part of Public Works’ Pavement Renovation, Sewer Replacement and Water Main Installation - Haight Street & Hayes Street, Contract 2264J. AWSS portion cancelled 12/2016.
7. Irving Street Pipeline – Install new 20” AWSS pipe on Irving Street from 7th Avenue to 19th Avenue as part of Public Works’ Irving Streetscape & MUNI Forward, Contract 2541J. Construction bids due 4/2017.
8. Pumping Station 1 – Install new diesel engines for seawater pumps. Substantial completion 6/2017.
9. Pumping Station 1 Tunnel – Install resilient inserts to improve Pumping Station 1 seawater tunnel seismic performance. Substantial completion 12/2017.
10. Pumping Station 2 – Improve the building structure’s seismic performance. Construction bids due 5/2017.
11. Street Valve Motorization – Motorize street valves on AWSS pipelines for improved water flow control. Bid advertisement 4/2017.

# Earthquake Safety and Emergency Response Bond Program

## (ESER 2010 & 2014)

### Cisterns

Cisterns E (WD-2746) and Cisterns F (WD-2747) construction continued. Twenty-three of the thirty planned cisterns are functional.

Contract	#	Location	Constructing	Functional	Contract Schedule
Cisterns E (WD-2746)	1	16th Ave., Vicente St.	✓		Substantial Completion  May 2017
	2	17th Ave., Pacheco St.		✓	
	3	18th Ave., Moraga St.	✓		
	4	18th Ave., Santiago St.	✓		
	5	Laguna Honda Hospital		✓	
Cisterns F (WD-2747)	1	5th Ave., Cabrillo St.	✓		Substantial Completion August 2017
	2	6th Ave., California St.	✓		
	3	30th Ave., Lake St.	✓		
	4	Apollo St., Williams Ave.	✓		

# Earthquake Safety and Emergency Response Bond Program

(ESER 2010 & 2014)

## Office of the Chief Medical Examiner (OCME)

(ESER 2014)



Before



In Progress

**Project Description:** The \$65M project will relocate Office of the Chief Medical Examiner (OCME) to One Newhall Street in the India Basin Industrial Park. The new facility will house about 50 employees who are organized into the four units of the OCME: Field Investigations, Medical/Autopsy, Laboratory, and Administration.

One Newhall Street is an existing 28,000 gsf industrial warehouse which will be renovated to add a second floor within the existing footprint of the building resulting in a seismically safe 46,000 gsf facility.

# Earthquake Safety and Emergency Response Bond Program

(ESER 2010 & 2014)

**Project Background:** The existing OCME is located at 850 Bryant also known as the Hall of Justice (HOJ). The HOJ is over 50 years old and seismically deficient. In the event of a major earthquake, this building is not expected to be operational. This project is part of a larger strategy to replace the Hall of Justice established in the City’s 10-Year Capital Plan as the Justice Facilities Improvement Program (JFIP).

The OCME is accredited by the National Association of Medical Examiners (NAME). During the previous accreditation in 2008, the City was advised that the existing facility is undersized, has a number of deficiencies that are currently mitigated by operational protocols, and the facility should be replaced to assure continued accreditation.

## Project Status:

**KMD Architects** has been providing CA phase services. All permits have been obtained. Sixty seven Informational Bulletins were issued for various clarifications and added scope.

**Clark Construction** started construction on November 17, 2017. Project’s completion is anticipated as originally scheduled on August 2, 2017.

**CMSS, Vanir/Saylor, JV**, has been providing numerous services including, but not limited to, change order reviews, review of construction schedules, participation in OAC meetings, review and analysis of budget, drawings, FF&E list, etc.

LEED Gold is the mandatory goal for this project (minimum 60 points required to be awarded the Gold certification). Project was registered with USGBC on April 9, 2014. Updated LEED scorecard lists 64 points under “yes” and 4 points are under “maybe” category.

## SCHEDULE

- Construction NTP November 17, 2015
  - Permanent Power Tie-In April 18, 2017
  - Start of Close-Out July 16, 2017
  - Substantial Completion August 31, 2017
  - Final Completion September 14, 2017
- Move-in September / October 2017
- Completed construction from NTP – 80%

## LOCAL HIRING (as reported through March 24, 2017)

- Total Work Hours – 30% requirement
- Actual – 26.77%
- Apprentice Work Hours – 50% requirement
- Actual – 38.12%



# Earthquake Safety and Emergency Response Bond Program

## (ESER 2010 & 2014)

Both local hiring requirements are projected to be met or exceeded based on the implementation of the corrective actions such as hiring a member of ABU (Helix), hiring from two sheet metal workers (Control Air), applying some of the local hire labor hours from other San Francisco projects (Conco), and in one case obtaining a waiver (Anning-Johnson).

### LBE Participation

- The LBE goal for the OCME Project is 20%
- LBE Commitment is 26.48%

### SAFETY

- No injuries, recordables incidents, or first aids to date.

### PARTNERING

- Session #7 scheduled on April 28, 2017

### Photos



Earthquake Safety and Emergency Response Bond Program  
(ESER 2010 & 2014)



### Traffic Company & Forensic Services Division (ESER 2014)

**Project Description:** The project will relocate the SFPD Forensic Services Division (FSD) and SFPD Traffic Company to a site located at 1995 Evans Avenue, at the intersection of Toland Street in the Bayview District of San Francisco. The amount of space requested for the Traffic Company was determined based on the Police Facilities Master Planning Study dated August 23, 2012.

The project is being developed to support a Full Time Employee (FTE) forecast for 2020 FSD demand of approximately 109 for FSD, approximately 100 for the Traffic Company and approximately 10 for the Real Estate Division's building engineering and custodial services. The size of the facility is approximately 90,000 gross square feet and allows for a potential future expansion if required.

**Project Background:** The SFPD Traffic Company is currently located at the Hall of Justice (HOJ) at 850 Bryant Street. The SFPD FSD is currently located at two facilities. The FSD Administration, Crime Scene Investigations, and Identification units, with approximately 60 employees, are housed at HOJ. The FSD Crime Lab, with approximately 25 employees, is housed at Building 606 in the Hunters Point Shipyard.

The HOJ is over 50 years old and seismically deficient. In the event of a major earthquake, this building is not expected to be operational. This project is part of a larger strategy to replace the Hall of Justice, established in the City's 10-Year Capital Plan as the Justice Facilities Improvement Program (JFIP).

The Hunters Point Shipyard is being transferred from the U.S. Navy to the City. The City plans to develop the Shipyard as a residential area. The area in which Building 606 is located is planned to be public open space as an amenity for nearby residences. Prior to the transfer of the property, the Navy is obligated to remove and mitigate hazardous materials in the soil. To fulfill that obligation, the Navy may have to demolish Building 606.

#### **Project Status:**

Schematic Design documents issued to the City by HOK on September 30, 2016 followed by HOK's cost estimate, performed by Cumming on October 17. Public Works estimator, Saylor, also delivered a cost estimate on October 17. Both estimates depicted an over budget amount in the range of 10-15%. Several rounds of cost reduction occurred resulting in a reduction to the over budget status, and HOK has undertaken a revision of design to align with budget, yielding an approach reviewed with the City on (date) that preliminarily achieved alignment.

The design team is underway with producing documents consistent with a "Schematic Design Progress printing" deliverable that will be included with the RFP to the three short-listed CM/GC teams expected to be released May 8, 2017.

### Police Facilities

#### Projects' Description:

The project includes various focused scope projects at 12 police facilities (9 district stations and 3 support facilities) across the City. The work scopes are derived from a series of onsite investigations, observations, and professional evaluations of different building systems that include mechanical, electrical, plumbing, fire protection, and structural safety. It also includes assessments of building envelope (i.e. integrity of roof, doors, windows, and walls), ADA accessibility requirements, as well as other site improvements that ensure safety and security.

Due to an urgent and immediate need that emerged in July 2016 for a new Firearms Simulator Training Facility, the client department requested a new building to be constructed at the Lake Merced Range for training purposes. A new project was created in response to the request. The new building was not part of the original scope of work and in order to fund for the development of the project, Public Works and the client department came to an agreement to re-budget the program and reduce the scope at Golden Gate Stables until further funding become available.

The project's overall budget is \$30M, the cost to address all building issues will likely exceed the budget, and therefore priorities are selected per recommendations by the Citywide Capital Plan. Those building deficiencies that potentially compromise the public's health and safety, and others that pertain to code compliance will get the first priority.

#### Projects' Status

##### ADA PACKAGE 1

The project addresses accessibility issues at the following stations: Bayview, Mission, Tenderloin, Central, and Northern.

Bayview Station: Construction completed.

Mission Station: Construction completed.

Central Station: Construction completed.

Tenderloin Station: Construction completed.

Northern Police Station: Construction completed.

##### ADA PACKAGE 2

Construction at Park Police Station began January 2017 and experienced some delays in the schedule due to heavy rains in the month of January and February; Park Police Station was substantially completed in March 2017. Construction at Richmond Police Station began February 2017; Ingleside Police Station began March 2017; Police Academy and Taraval

# Earthquake Safety and Emergency Response Bond Program (ESER 2010 & 2014)

Police Station will begin in April 2017. The project is scheduled to be complete by May 2017.

ADA Package 2 construction photos at various locations:



Park Police Station – Left: existing asphalt pavement being demolished, rebars installed. Right: new accessible parking space.



Park Police Station – Left: existing site with no striped pedestrian path. Right: new accessible pedestrian path from street.

## Earthquake Safety and Emergency Response Bond Program (ESER 2010 & 2014)



Richmond Police Station – Left: existing public transaction window with no accessible counter. Right: new public transaction window with accessible counter.



Ingleside Police Station – existing pavement being demolished, new accessible pedestrian path to the Community Room entrance will be constructed.

# Earthquake Safety and Emergency Response Bond Program

(ESER 2010 & 2014)



Ingleside Police Station – existing concrete pad being demolished, new accessible parking space will be constructed in same place.

# Earthquake Safety and Emergency Response Bond Program

(ESER 2010 & 2014)

## **NORTHERN POLICE STATION RENOVATION PROJECT**

The project was advertised and three bids were received at the bid opening on January 22, 2017:

1. Alpha Bay Builders: \$1,796,123
2. Joseph Cumiskey Construction Corp: \$2,688,500
3. Angotti & Reilly: \$2,286,000

The apparent lowest bidder - Alpha Bay Builders sought relief from bid on 1/18/2017 due to a mathematical error in the bid calculations.

The second lowest bidder Angotti & Reilly sought relief from bid on 1/25/2017 due to a mathematical error in the bid calculations, additionally they listed a subcontractor who was not DIR registered.

Public Works executed an order to reject all bids on February 03, 2017 as the remaining bid at \$2,688,500 was 17% above the project's budget.

The project was repackaged and combined with the MEP Package 1 project and rebid in February 2017 as one single contract, 4 bids were received on March 29, 2017:

1. E.F. Brett & Company: \$2,972,500
2. MH Construction Management: \$3,713,500
3. Angotti & Reilly: \$3,963,314
4. Alpha Bay Builders: \$4,015,566

The apparent lowest bidder is E.F. Brett & Company however their bid was considered non-responsive as an un-signed bid form was submitted. The apparent lowest responsive bidder is MH Construction Management, the bid price is 8% over project budget.

## **MEP PACKAGE 1 – RICHMOND AND TARAVAL POLICE STATION**

The project was advertised and three bids were received on the bid opening at January 25, 2017:

1. Angotti & Reilly: \$1,780,646
2. J&J Southwest Construction: \$1,395,169
3. Alpha Bay Builders: \$1,760,604

The apparent lowest bidder was J&J Southwest Construction however their bid was considered non-responsive because an un-signed security bid form was submitted. The second lowest bidder was Alpha Bay Builders however their bid was also considered non-responsive by CMD (Contract Monitoring Division) as they did not meet City's LBE



# Earthquake Safety and Emergency Response Bond Program

(ESER 2010 & 2014)

requirements. The third bidder Angotti & Reilly's bid at \$1,780,646 was 57% above the project's budget.

Public Works executed an order to reject all bids on February 03, 2017.

The project was repackaged and combined with the Northern Police Station Renovation project and rebid in February 2017 as one single contract, 4 bids were received on March 29, 2017:

1. E.F. Brett & Company: \$2,972,500
2. MH Construction Management: \$3,713,500
3. Angotti & Reilly: \$3,963,314
4. Alpha Bay Builders: \$4,015,566

The apparent lowest bidder is E.F. Brett & Company however their bid was considered non-responsive as an un-signed bid form was submitted. The apparent lowest responsive bidder is MH Construction Management, the bid price is 8% over project budget.

## **NEW FIREARMS SIMULATOR TRAINING FACILITY**

Project was reviewed by the Planning Department; CEQA clearance was obtained on 1/23/2017. Drawings for the Site and Utility Package were submitted to the Planning Department for a Coastal Zone Permit on 3/22/2017, drawings were submitted on 3/27/2017 to DBI for a construction permit for the Site and Utility Package.

### Package #1: Demo existing trailer

Existing trailer was demolished and removed off-site on the week of 3/13/2017 – 3/17/2017.

### Package #2: Modular Building

Final drawings for the Modular Building were completed in March 2017, the project was reviewed and approved by the City's Access Coordinator on March 16, 2017. The modular building package was advertised on March 28, 2017, bids are due on April 14, 2017.

### Package #3: Site and Utility Improvement

Final drawings for the Site and Utility Package were completed in March 2017 and was reviewed and approved by the City's Access Coordinator on March 16, 2017. The drawings were submitted to Planning Department and Building Department for construction permits as well as Coastal Zone Permit. This contract will be awarded to a JOC contractor, quotes are due on April 12, 2017.

# Earthquake Safety and Emergency Response Bond Program

(ESER 2010 & 2014)

## INGLESIDE POLICE STATION RENOVATION

The Planning Department completed the CEQA review and clearance was issued on January 26, 2017. Building Department reviewed the project as an over-the-counter permit and final approval was issued on March 9, 2017 for construction. Final bid documents are expected to be complete in April 2017.

## PARK POLICE STATION RENOVATION

The Planning Department completed the CEQA review and clearance was issued on March 24, 2017. The project is currently going through Building review at DBI for an over-the-counter permit. Final bid documents are expected to be complete in May 2017.

## POLICE ACADEMY RENOVATION

The design team for this project was assembled in February 2017, which consists of Public Works BDC architects and IDC engineers. There was a kick-off meeting on March 7, 2017. The project scope includes structural alteration, provide cooling to selected classrooms and offices, replace existing outdated switchgear, provide additional power receptacles at selected rooms, and roofing replacement.

## MEP PACKAGE 2 (BAYVIEW, TENDERLOIN, LAKE MERCED RANGE)

The design team for this project was assembled in February 2017, which consists of Public Works BDC architects and IDC engineers. There was a kick-off meeting on March 13, 2017. The project scope includes:

Bayview Station:

- Chiller, air handler, and exhaust fans replacement
- Emergency generator and tank replacement

Tenderloin Station:

- Provide cooling to selected spaces
- Emergency generator and tank replacement
- Remediate flooding at Men's shower, janitor, and breakroom

Lake Merced Range:

- Replace furnaces and other HVAC equipment

# Earthquake Safety and Emergency Response Bond Program

(ESER 2010 & 2014)

## Budget, Funding and Expenditures ESER 2010

The budget for the ESER 2010 Bond Program is \$412,300,000. The following is a summary of the budget and appropriation per component:

Components/Projects	Original Budget	Revised Budget	GENERAL OBLIGATION BONDS				Encumbrance+ Expenditures / Revised Budget	Encumbrance+ Expenditures / Appropriation
			Appropriation	Expenditures	Encumbrance	Balance		
Public Safety Building (PSB)	239,000,000	236,661,976	236,661,976	230,423,704	817,742	5,420,530	98%	98%
Neighborhood Fire Stations (NFS)	64,000,000	66,906,318	66,906,318	33,330,884	24,500,473	9,074,961	86%	86%
Auxiliary Water Supply System (AWSS)	102,400,000	102,400,000	102,400,000	73,569,476	6,001,617	22,828,907	78%	78%
Oversight, Accountability & Cost of Issuance	6,900,000	3,965,935	3,965,935	3,244,003	474,133	247,799	94%	94%
Interest Earned		4,486,305	4,486,305	0	0	4,486,305	0%	0%
Controller's Reserve		2,338,024	2,338,024	0	0	2,338,024	0%	0%
<b>TOTAL</b>	<b>412,300,000</b>	<b>416,758,558</b>	<b>416,758,558</b>	<b>340,568,067</b>	<b>31,793,965</b>	<b>44,396,526</b>	<b>82%</b>	<b>89%</b>

The budget and appropriation for PSB is \$236,661,976 of which all funding has been appropriated.

The budget for NFS is \$64,000,000 of which \$66,906,318 funding has been appropriated which includes the savings from the cost of issuance.

The budget and appropriation for AWSS is \$102,400,000 of which all funding has been appropriated.

The budget for other costs such as the Controller's Audit Fund, Citizens General Obligation Bond Oversight Committee, Cost of Issuance and Underwriters' Discount is \$6,900,000. The appropriation of \$4,486,305 reflects the proceeds of the six bond sales.

Interest earned on the six bond sales totaled \$4,486,305.

The Accountability reports for the second thru sixth bond sales are available on the ESER website at <http://www.sfearthquakesafety.org/eser-2010-reports.html>.

### Expenditures and Encumbrances

The ESER 2010 expenditures and encumbrances through March 31, 2017 are \$340,568,067 and \$31,793,965 respectively. The combined totals represent 86% of the appropriation of and 89% of the budget.

# Earthquake Safety and Emergency Response Bond Program

(ESER 2010 & 2014)

## ESER 2014

The ESER 2014 budget is \$400,000,000. The total approved appropriation is \$210,251,174. The following is a summary of the budget and appropriation per component:

Components/Projects	Original Budget	Revised Budget	GENERAL OBLIGATION BONDS				Encumbrance+ Expenditures / Revised Budget	Encumbrance+ Expenditures / Appropriation
			Appropriation	Expenditures	Encumbrance	Balance		
Office of the Chief Medical Examiner (OCME)	63,895,000	66,233,024	66,233,024	44,063,301	13,512,989	8,656,734	87%	87%
Traffic Control & Forensic Services Division (TC/FSD)	162,195,000	162,195,000	46,703,201	22,554,289	2,166,291	21,982,620	15%	53%
Police Facilities (PF)	29,490,000	29,490,000	17,077,653	5,280,158	802,517	10,994,979	21%	36%
Neighborhood Fire Station (NFS)	83,555,000	81,216,976	23,793,505	9,348,003	320,519	14,124,980	12%	41%
Emergency Firefighting Water System (EFWS)	54,065,000	54,065,000	54,065,000	3,970,795	117,040	49,977,167	8%	8%
Oversight/Accountability & Cost of Issuance	6,800,000	6,800,000	2,378,790	1,800,356	560,962	17,471	35%	99%
<b>TOTAL</b>	<b>400,000,000</b>	<b>400,000,000</b>	<b>210,251,174</b>	<b>87,016,902</b>	<b>17,480,319</b>	<b>105,753,952</b>	<b>26%</b>	<b>50%</b>

The OCME budget is \$66,233,024 of which all funding has been appropriated.

The TCFSD budget is \$162,195,000 of which \$46,703,201 has been appropriated. Future bond sale(s) totaling \$115,491,799 would be needed to fully fund this component.

The Police Facilities budget is \$29,490,000 of which \$17,077,653 has been appropriated. Future bond sale(s) totaling \$12,412,347 would be needed to fully fund this component.

The NFS budget is \$81,216,979 of which \$23,793,507 has been appropriated. Future bond sale(s) totaling \$57,423,472 would be needed to fully fund this component. An additional \$1,500,000 from the general fund was appropriated to fund the construction of Station 48 at Treasure Island.

The Oversight, Accountability and Cost of Issuance budget is \$6,800,000 of which \$2,378,790 has been appropriated.

### Expenditures and Encumbrances

Total expenditures and encumbrances through March 31, 2017 are \$87,016,902 and \$17,480,319 respectively. The combined totals represent 26% of the appropriation of and 50% of the budget.

# Earthquake Safety and Emergency Response Bond Program (ESER 2010 & 2014)

## Attachment 1 – Contact Information



San Francisco Public Works | City and County of San Francisco | Building Design and Construction | Project Management

30 Van Ness Avenue, Suite 4100 | San Francisco, CA 94102 | (415) 557-4700 | [sfpublicworks.org](http://sfpublicworks.org)

Contact	Title	Component	Telephone No.	Cell No.	E-mail
Charles Higuera	Program Manager	ESER 2010 & 2014	(415) 557-4646	(415) 307-7891	charles.higuera@sfdpw.org
Magdalena Ryor	Project Manager	ESER 2014 OCME	(415) 557-4659	(415) 602-0930	magdalena.ryor@sfdpw.org
Michael Rossetto	Project Manager	ESER 2014 TC/FSD	(415) 557-4773	(415) 530-7368	michael.rossetto@sfdpw.org
Lisa Zhuo	Project Manager	ESER 2014 PF	(415) 557-4699		lisa.zhuo@sfdpw.org
Gabriella Judd-Cirelli	Project Manager	ESER 2010 & 2014 NFS	(415) 557-4707	(415) 279-4395	gabriella.cirelli@sfdpw.org
Sherry Katz	Project Manager	ESER 2010 & 2014 NFS Focused Scope	(415) 557-4718		sherry.kats@sfdpw.org
Jim Buker	Senior Architect		(415) 557-4758	(415) 225-9481	jim.buker@sfdpw.org
Sean O'Brien	Project Mgr. Asst.	ESER 2010 & 2014 NFS	(415) 557-4694		sean.obrien@sfdpw.org
Marisa Fernandez	Financial Analyst	ESER 2010 & 2014	(415) 557-4653		marisa.fernandez@sfdpw.org
Kelly Griffin	Financial Analyst	ESER 2010 & 2014 NFS	(415) 557-4667		kelly.griffin@sfdpw.org
Jamin Barnes	Financial Analyst	ESER 2014 PF	(415) 557-4654		jamin.barnes@sfdpw.org
Public Utilities Commission					
525 Golden Gate Avenue, 9th Floor   San Francisco, CA 94102					
Contact	Title	Component	Telephone No.	Cell No.	E-mail
David Myerson	Project Manager	ESER 2010 AWSS & ESER 2014 EFWS	(415) 934-5710	(415) 500-5449	dmyerson@swater.org

Earthquake Safety and Emergency Response Bond Program  

---

  
(ESER 2010 & 2014)

Attachment 2 – Financial Summary

Earthquake Safety and Emergency Response Bond Program  
(ESER 2010 & 2014)

Job Order Number & Title	Approved Budget 3/29/2013	Appropriation			Expenditures			Encumbrance	Balance	% Expenditures/ Appropriation	% Expenditures/ Budget
		Previous	Change +/-	Current	Previous	Current 3/01-3/31/17	Total				
<b>Public Safety Building</b>											
7400A Public Safety Planning (included in 7410A)	550,000	550,000	0	550,000	550,000	0	550,000	0	0	100%	100%
7410A Public Safety Building	238,450,000	236,111,978	(1)	236,111,978	229,794,236	79,468	229,873,704	817,742	5,420,532	97%	96%
<b>Public Safety Building Total</b>	<b>239,000,000</b>	<b>236,661,978</b>	<b>(1)</b>	<b>236,661,978</b>	<b>230,344,236</b>	<b>79,468</b>	<b>230,423,704</b>	<b>817,742</b>	<b>5,420,532</b>	<b>97%</b>	<b>96%</b>
<b>Neighborhood Fire Stations (NFS)</b>											
<b>Focused Scope Projects</b>											
7431A Roofing	5,109,248	4,641,832	(0)	4,641,832	4,641,834	0	4,641,834	0	(2)	100%	91%
7432A Showers	1,472,582	1,262,133	(0)	1,262,132	1,262,132	0	1,262,132	0	0	100%	86%
7434A Window Repair	1,211,563	263,672	(0)	263,672	263,671	0	263,671	0	1	100%	22%
7435A Mechanical Repairs	724,161	585,412	0	585,412	585,411	0	585,411	0	1	100%	81%
7436A Exterior Envelope	1,500,009	2,302,436	0	2,302,436	2,302,437	0	2,302,437	0	(1)	100%	153%
7437A Generators	2,076,589	1,534,624	0	1,534,624	1,534,622	0	1,534,622	0	2	100%	74%
7439A Focused Scope Misc.	124,424	124,186	0	124,186	124,186	0	124,186	0	0	100%	100%
7447A NFS Focused Scope Warranty Phase	4,909	4,909	(1,992)	2,917	2,917	0	2,917	0	0	100%	#DIV/0!
<b>Focused Scope Projects Total</b>	<b>12,218,577</b>	<b>10,719,204</b>	<b>(1,992)</b>	<b>10,717,212</b>	<b>10,717,211</b>	<b>0</b>	<b>10,717,211</b>	<b>0</b>	<b>0</b>	<b>100%</b>	<b>88%</b>
<b>Additional Focused Scope Projects TBD</b>											
App Bay Doors (scope moved from ESER 2014)											
7449A Exterior Envelope Headquarters		35,522	0	35,522	0	5,999	5,999	0	29,523	17%	-
<b>Additional Focused Scope Total</b>	<b>0</b>	<b>35,522</b>	<b>0</b>	<b>35,522</b>	<b>0</b>	<b>5,999</b>	<b>5,999</b>	<b>0</b>	<b>29,523</b>	<b>-</b>	<b>-</b>
<b>Comprehensive</b>											
7427A Fire Station No. 36	4,798,218	5,794,924	0	5,794,924	5,547,129	14,441	5,561,570	8,423	224,931	96%	116%
7438A Station #44	1,567,265	1,380,972	0	1,380,972	1,380,970	0	1,380,970	0	2	100%	88%
<b>Comprehensive Sub-Total</b>	<b>6,365,483</b>	<b>7,175,895</b>	<b>0</b>	<b>7,175,896</b>	<b>6,928,099</b>	<b>14,441</b>	<b>6,942,540</b>	<b>8,423</b>	<b>224,933</b>	<b>97%</b>	<b>109%</b>
<b>Seismic</b>											
7440A Fire Station No. 5	13,838,757	20,414,708	0	20,414,708	2,863,209	16,869	2,880,078	15,016,187	2,518,443	14%	21%
7441A Fire Station No. 9 Utility Isolation	200,000	200,000	0	200,000	0	0	0	0	200,000	0%	0%
7442A Fire Station No. 16	8,841,656	13,793,250	0	13,793,250	2,638,212	509,829	3,148,041	8,749,189	1,896,020	23%	36%
7424A Fire Boat/ Fire Station No. 35	9,993,136	726,450	0	726,450	232,108	7,840	239,948	449,265	37,237	33%	2%
7425A Medical/Equipment Logistics Ctr.	589,000	17,680	0	17,680	8,179	0	8,179	0	9,501	46%	1%
<b>Seismic Sub-Total</b>	<b>33,462,550</b>	<b>35,152,088</b>	<b>0</b>	<b>35,152,088</b>	<b>5,741,708</b>	<b>534,538</b>	<b>6,276,246</b>	<b>24,214,641</b>	<b>4,661,201</b>	<b>18%</b>	<b>19%</b>
<b>Soft Costs</b>											
7420A NFS (Pre-Bond)	1,015,669	1,015,669	0	1,015,669	1,015,669	0	1,015,669	0	0	100%	100%
7429A ESER NFS Team Building		16,000	0	16,000	13,565	0	13,565	0	2,435	85%	0%
7430A Neighborhood Fire Stations	10,202,040	8,865,930	2,820	8,868,750	8,284,878	74,775	8,359,653	277,409	231,687	94%	82%
<b>Soft Costs Sub-Total</b>	<b>11,217,709</b>	<b>9,897,599</b>	<b>2,820</b>	<b>9,900,419</b>	<b>9,314,112</b>	<b>74,775</b>	<b>9,388,887</b>	<b>277,409</b>	<b>234,122</b>	<b>279%</b>	<b>182%</b>
Component Reserve	735,681	0	0	0	0	0	0	0	0	-	0%
7445A NFS Proceeds of Bond Sales		3,926,010	(828)	3,925,182	0	0	0	0	3,925,182	-	-
<b>Neighborhood Fire Stations Total</b>	<b>64,000,000</b>	<b>66,906,318</b>	<b>0</b>	<b>66,906,318</b>	<b>32,701,130</b>	<b>629,753</b>	<b>33,330,884</b>	<b>24,500,473</b>	<b>9,074,961</b>	<b>50%</b>	<b>52%</b>
<b>Budget and Finance Committee Reserve (06C00)</b>	<b>0</b>	<b>2,338,024</b>	<b>0</b>	<b>2,338,024</b>	<b>0</b>	<b>0</b>	<b>0</b>	<b>0</b>	<b>2,338,024</b>	<b>0%</b>	<b>0%</b>
<b>General Obligation Bond (GOB) Oversight/Accountability and Cost of Issuance and Associated Costs</b>											
Controller's Audit Fund (081C4)	810,800	826,655	0	826,655	479,941	0	479,941	197,884	148,830	58%	59%
Citizens GOB Oversight Committee (081GO)	405,400	412,300	0	412,300	136,051	0	136,051	276,249	0	33%	17%
Cost of Issuance (06C00+07311)	5,683,800	2,727,680	(700)	2,726,980	2,629,153	(1,142)	2,628,011	0	98,969	96%	46%
Underwriter's Discount		0	0	0	0	0	0	0	0	(2)	
<b>Sub-Total</b>	<b>6,900,000</b>	<b>3,966,635</b>	<b>(700)</b>	<b>3,965,935</b>	<b>3,245,145</b>	<b>(1,142)</b>	<b>3,244,003</b>	<b>474,133</b>	<b>247,799</b>	<b>82%</b>	<b>47%</b>
<b>ESER 2010 Total</b>	<b>412,300,000</b>	<b>416,759,261</b>	<b>(700)</b>	<b>416,758,560 (3)</b>	<b>338,002,336</b>	<b>2,565,731</b>	<b>340,568,067</b>	<b>31,793,965</b>	<b>44,396,528</b>	<b>82%</b>	<b>83%</b>

As of 4/1/2017, the FAMIS fiscal month 09 2017, actual expenditures are \$465,571,832. The variances from the report are as follows:

(1) The transfer out to PUC AWSS is shown as actual (0935W OTO TO SW-WATER DE)

(a) less \$73,569,467 for actuals per FAMIS Project Structure CUW AWS AW as of 4/1/2017.

(b) less \$63,990 for actuals Controller's Audit Fund (CUW AWS 081C4) and CGOBOC (CUW AWS 081GO) as of 4/1/2017.

(2) Cost of Issuance

	Premium	Underwriter's		
(a) First Bond Sale	5,118,923	(211,953)	=	4,906,970
(b) Second Bond Sale	16,898,267	(683,820)	=	16,214,447
(c) Third Bond Sale	6,213,547	(65,051)	=	6,148,496
(d) Fourth Bond Sale	2,606,056	(77,247)	=	2,528,809
(e) Fifth Bond Sale	5,461,975	(202,062)	=	5,259,913
(f) Sixth Bond Sale	1,834,328	(145,491)	=	1,688,837
<b>Total Cost of Issuance</b>	<b>38,133,096</b>	<b>(1,385,624.25)</b>		

(3) Ordinance 60-15 Appropriation Developer Contribution and Reimbursement for PSB

(4) PSB Furniture Fixtures and Equipment

**Total (CESER1)**

	6,343,891	2,806,119
	5,721,909	4,818,825
<b>Total</b>	<b>465,571,832</b>	<b>413,875,233</b>

102,568,217  
(73,569,476)  
(63,990)

Earthquake Safety and Emergency Response Bond Program

(ESER 2010 & 2014)

Components/Projects	Original Budget	Revised Budget	GENERAL OBLIGATION BONDS				Encumbrance+ Expenditures / Revised Budget	Encumbrance+ Expenditures / Appropriation
			Appropriation	Expenditures	Encumbrance	Balance		
Office of the Chief Medical Examiner (OCME)	63,895,000	66,233,024	66,233,024	44,063,301	13,512,989	8,656,734	87%	87%
Traffic Control & Forensic Services Division (TC/FSD)	162,195,000	162,195,000	46,703,201	22,554,289	2,166,291	21,982,620	15%	53%
Police Facilities (PF)								
Focused Scope								
9203A ADA Upgrades	1,871,121	1,871,121	2,024,190	1,251,404	583,813	188,974	98%	91%
9204A MEP Upgrades Package 1	2,089,426	2,089,426	627,940	474,986	8,600	144,354	23%	77%
9205A MEP Upgrades Package 2	2,675,775	2,675,775	545,138	15,102	461	529,575	1%	3%
9222A Mission Police Station	1,816,040	1,816,040	461	0	461	0	0%	100%
9206A Ingleside Station Renovation	1,833,172	1,833,172	436,802	241,708	461	194,633	13%	55%
9224A Northern Police Station	3,394,372	3,394,372	599,935	398,481	2,975	198,479	12%	67%
9228A Golden Gate Stables	0	0	1	0	0	1	-	-
9229A Police Academy	3,041,065	3,041,065	643,153	23,010	461	619,681	1%	4%
9231A Park Police Station	3,519,327	3,519,327	506,663	273,096	16,191	217,376	8%	57%
9232A Firearms Simulator Project	1,049,681	1,049,681	687,729	117,077	103,212	467,440	21%	32%
<b>Focused Scope Subtotal</b>	<b>21,289,979</b>	<b>21,289,979</b>	<b>6,072,011</b>	<b>2,794,864</b>	<b>716,636</b>	<b>2,560,512</b>	<b>16%</b>	<b>58%</b>
Special Projects								
Pistol Range Roof Repairs	88,829	88,829	88,829	88,829	0	0	100%	100%
Park Exterior Repairs	8,487	8,487	8,489	8,487	0	2	100%	100%
Central Expansion Feasibility Study	33,397	33,397	33,397	33,397	0	0	100%	100%
ID Bureau & Property Control Study	92,587	92,587	92,587	75,286	17,302	0	100%	100%
<b>Special Projects Subtotal</b>	<b>223,300</b>	<b>223,300</b>	<b>223,302</b>	<b>205,999</b>	<b>17,302</b>	<b>2</b>	<b>100%</b>	<b>100%</b>
9201A Police Facilities Program Wide	5,255,370	5,255,370	2,919,855	2,279,295	68,580	571,979	45%	80%
Program Reserve	2,721,351	2,721,351	0	0	0	0	0%	-
Finance Costs tracked seperately								
9200A Bond Proceeds	0	0	7,862,485	0	0	7,862,485		
Police Facilities (PF)	<b>29,490,000</b>	<b>29,490,000</b>	<b>17,077,653</b>	<b>5,280,158</b>	<b>802,517</b>	<b>10,994,979</b>	<b>31%</b>	<b>15%</b>
Neighborhood Fire Station (NFS)								
Seismic Improvement								
9635A NFS 35 Fire Boat	\$32,711,448	\$32,711,448	\$1	\$0	\$0	\$1	21%	2%
9535A NFS Pier 26 Fire Boat Berthing	\$0	\$0	\$0	\$0	\$0	\$0	73%	96%
7848A NFS 48 Treasure Island	\$1,500,000	\$1,500,000	\$1,360,196	\$1,360,196	\$0	\$0	100%	95%
9660A Hose Tower Removal & Roofing	\$1,484,985	\$1,484,985	\$212,840	\$91,246	\$57,460	\$64,134	43%	6%
<b>Seismic Improvement Subtotal</b>	<b>\$35,696,433</b>	<b>\$35,696,433</b>	<b>\$1,573,037</b>	<b>\$1,451,442</b>	<b>\$57,460</b>	<b>\$64,135</b>	<b>57%</b>	<b>13%</b>
Comprehensive Renovation Projects								
9663A NFS 3	\$8,000,000	\$8,000,000	\$725,561	\$41,965	\$85,647	\$597,948	6%	1%
9607A NFS 7	\$2,078,778	\$2,078,778	\$329,615	\$85,095	\$0	\$244,520	26%	4%
<b>Comprehensive Renovation Subtotal</b>	<b>\$10,078,778</b>	<b>\$10,078,778</b>	<b>\$1,055,176</b>	<b>\$127,060</b>	<b>\$85,647</b>	<b>\$842,467</b>	<b>12%</b>	<b>1%</b>



Components/Projects	Original Budget	Revised Budget	GENERAL OBLIGATION BONDS				Encumbrance+ Expenditures / Revised Budget	Encumbrance+ Expenditures / Appropriation
			Appropriation	Expenditures	Encumbrance	Balance		
<b>Focused Scope Projects</b>								
<b>Roofing</b>								
9603A Package 1 NFS 3	\$1,843,439	\$1,843,439	\$2,024,251	\$1,760,389	\$13,022	\$250,840	87%	95%
9640A Package 2 NFS 40	\$46,885	\$46,886	\$51,857	\$51,848	\$0	\$9	100%	111%
9664A Package 3 NFS 3 & 17	\$13,095	\$13,095	\$14,065	\$14,065	\$0	(\$0)	100%	107%
9662A Package 5 NFS 43	\$3,028,855	\$1,921,911	\$940,739	\$299,800	\$0	\$640,938	32%	16%
9665A Package 6 NFS 9, 20, 23, 24	\$0	\$747,987	\$131,720	\$80,373	\$14,031	\$37,316	61%	11%
9666A Package 7 NFS 29	\$0	\$358,957	\$60,464	\$36,718	\$5,127	\$18,619	61%	10%
<b>Roofing Subtotal</b>	<b>\$4,932,274</b>	<b>\$4,932,275</b>	<b>\$3,223,094</b>	<b>\$2,243,193</b>	<b>\$32,179</b>	<b>\$947,721</b>	<b>70%</b>	<b>45%</b>
<b>Exterior Envelope</b>								
9676A Package 1 NFS 8, 20, 23 & 29	\$422,502	\$422,502	\$270,397	\$42,993	\$0	\$227,404	16%	10%
9678A Package 2 NFS 24 & 34	\$1,558,942	\$1,558,942	\$91,982	\$35,618	\$36,971	\$19,393	39%	2%
9679A Package 3 NFS 11 & 29	\$296,727	\$296,727	\$130,920	\$23,176	\$0	\$107,744	18%	8%
9680A Package 4 NFS 22	\$946,195	\$946,195	\$136,907	\$46,993	\$14,239	\$75,675	34%	5%
<b>Exterior Envelope Subtotal</b>	<b>\$3,224,366</b>	<b>\$3,224,366</b>	<b>\$630,206</b>	<b>\$148,780</b>	<b>\$51,210</b>	<b>\$430,216</b>	<b>24%</b>	<b>5%</b>
<b>Emergency Generators</b>								
9681A Package 1 NFS 31	\$418	\$418	\$13,834	\$13,834	\$0	\$0	3%	3%
9682A Package 2 NFS 14 (vent only)	\$14,997	\$14,997	\$0	\$0	\$0	\$0	-	0%
9683A Package 3 NFS 24 (housing only)	\$49,991	\$49,991	\$0	\$0	\$0	\$0	-	0%
9684A Package 4 NFS 37 (housing only)	\$62,488	\$62,488	\$4	\$0	\$0	\$4	0%	0%
<b>Emergency Generators Subtotal</b>	<b>\$127,894</b>	<b>\$127,893</b>	<b>\$13,838</b>	<b>\$13,834</b>	<b>\$0</b>	<b>\$4</b>	<b>3%</b>	<b>2%</b>
<b>Shower Replacement</b>								
9667A Package 1 NFS 13, 20, 22, 34	\$244,177	\$244,177	\$360,164	\$360,164	\$0	\$0	100%	148%
9668A Package 2 NFS 10, 17, 19 & 33	\$384,880	\$384,880	\$60,582	\$37,836	\$0	\$22,745	62%	10%
<b>Shower Replacement Subtotal</b>	<b>\$629,057</b>	<b>\$629,057</b>	<b>\$420,746</b>	<b>\$398,001</b>	<b>\$0</b>	<b>\$22,745</b>	<b>95%</b>	<b>63%</b>
<b>HVAC Improvements</b>								
9685A Package 1 NFS 8, 9, 14, 20 & 41	\$500,000	\$500,000	\$49,196	\$9,621	\$0	\$39,575	20%	2%
<b>HVAC Improvements Subtotal</b>	<b>\$500,000</b>	<b>\$500,000</b>	<b>\$49,196</b>	<b>\$9,621</b>	<b>\$0</b>	<b>\$39,575</b>	<b>20%</b>	<b>2%</b>
<b>Window Replacement</b>								
9672A Package 1 NFS 9, 19, 24 & 29	\$74,966	\$74,966	\$66,617	\$66,617	\$0	(\$0)	100%	89%
9671A Package 3 NFS 25	\$24,523	\$24,523	\$18,988	\$18,988	\$0	\$0	100%	77%
9673A Package 4 NFS 8, 20 & 21	\$36,547	\$36,547	\$35,632	\$35,632	\$0	(\$0)	100%	97%
9674A Package 5 NFS 14, 33, 37 & 43	\$151,078	\$151,078	\$123,804	\$61,757	\$8,170	\$53,877	50%	41%
9675A Package 6 NFS 11, 12 & 23	\$124,945	\$124,945	\$99,215	\$99,215	\$0	\$0	100%	79%
<b>Window Replacement Subtotal</b>	<b>\$412,059</b>	<b>\$412,058</b>	<b>\$344,257</b>	<b>\$282,210</b>	<b>\$8,170</b>	<b>\$53,877</b>	<b>82%</b>	<b>68%</b>
<b>Other Focused Scope Projects</b>								
<b>Sidewalk</b>								
9699A Packages 1, 2, 3 NFS 13, 31, 26 & 20	\$210,726	\$210,726	\$119,493	\$119,493	\$0	(\$0)	100%	57%
<b>Sidewalk Subtotal</b>	<b>\$210,726</b>	<b>\$210,726</b>	<b>\$119,493</b>	<b>\$119,493</b>	<b>\$0</b>	<b>(\$0)</b>	<b>100%</b>	<b>57%</b>

Earthquake Safety and Emergency Response Bond Program

(ESER 2010 & 2014)

Components/Projects	Original Budget	Revised Budget	GENERAL OBLIGATION BONDS				Encumbrance+ Expenditures / Revised Budget	Encumbrance+ Expenditures / Appropriation
			Appropriation	Expenditures	Encumbrance	Balance		
<b>Apparatus Bay Doors</b>								
9655A Package 1 NFS 15	\$138,432	\$138,432	\$130,812	\$59,982	\$0	\$70,830	79%	78%
9654A Package 2 Ancillary Items (all stations)	\$0	\$0	\$32,508	\$32,508	\$0	(\$0)	100%	-
9657A Package 3 NFS 6, 9, 10, 11, 17, & 38	\$631,630	\$631,630	\$157,197	\$7,913	\$0	\$149,284	5%	1%
9658A Package 4 31 Stations (70 Doors)	\$8,748,338	\$8,748,338	\$154,647	\$27,658	\$0	\$126,989	18%	0%
<b>Apparatus Bay Doors Subtotal</b>	<b>\$9,518,400</b>	<b>\$9,518,400</b>	<b>\$475,164</b>	<b>\$128,061</b>	<b>\$0</b>	<b>\$347,103</b>	<b>50%</b>	<b>4%</b>
<b>Apparatus Bay Doors Access Control</b>								
9697A Access Control	\$1,150,000	\$1,150,000	\$508,708	\$472,034	\$5,140	\$31,534	93%	41%
Focused Scope Reserve	\$0	\$0						
<b>Focused Scope Subtotal</b>	<b>\$20,704,776</b>	<b>\$20,704,775</b>	<b>\$5,784,703</b>	<b>\$3,815,227</b>	<b>\$96,700</b>	<b>\$1,872,775</b>	<b>63%</b>	<b>19%</b>
<b>Studies</b>								
9502A Pre-Design	\$586,700	\$586,700	\$621,820	\$531,195	\$49,158	\$41,467	85%	91%
9651A Seismic Evaluation	\$300,000	\$300,000	\$301,500	\$252,210	\$0	\$49,290	84%	84%
9698A EMS/BOE	\$550,000	\$550,000	\$550,000	\$476,615	\$0	\$73,385	87%	87%
9653A Space Analysis	\$45,000	\$45,000	\$44,389	\$0	\$0	\$44,389	0%	0%
<b>Studies Subtotal</b>	<b>\$1,481,700</b>	<b>\$1,481,700</b>	<b>\$1,517,709</b>	<b>\$1,260,019</b>	<b>\$49,158</b>	<b>\$208,532</b>	<b>83%</b>	<b>85%</b>
<b>Required Costs</b>								
9652A NFS Program Management	\$9,291,802	\$9,291,802	\$3,512,218	\$2,694,255	\$31,555	\$786,408	77%	29%
<i>Finance Costs tracked separately</i>								
<b>Required Costs Subtotal</b>	<b>\$9,291,802</b>	<b>\$9,291,802</b>	<b>\$3,512,218</b>	<b>\$2,694,255</b>	<b>\$31,555</b>	<b>\$786,408</b>	<b>77%</b>	<b>29%</b>
9500A Bond Proceeds	\$0	\$0	\$10,350,662	\$0	\$0	\$10,350,662	0%	-
Program Reserve	\$6,301,511	\$3,963,492	\$0	\$0	\$0	\$0		
<b>Neighborhood Fire Stations (NFS)</b>	<b>\$83,555,000</b>	<b>\$81,216,981</b>	<b>\$23,793,505</b>	<b>\$9,348,003</b>	<b>\$320,519</b>	<b>\$14,124,980</b>	<b>42%</b>	<b>15%</b>

Components/Projects	Original Budget	Revised Budget	GENERAL OBLIGATION BONDS				Encumbrance+ Expenditures / Revised Budget	Encumbrance+ Expenditures / Appropriation
			Appropriation	Expenditures	Encumbrance	Balance		
<b>Emergency Firefighting Water System (EFWS)</b>								
19th Avenue Pipeline	\$401,508	\$401,508	\$401,508	\$286,513	\$0	\$114,995	71%	71%
Ashbury Bypass Pipeline	\$158,000	\$158,000	\$158,000	\$19,048	\$0	\$138,952	12%	12%
Candlestick Point Pipeline	\$1,000,000	\$1,000,000	\$1,000,000	\$440,831	\$0	\$559,169	44%	44%
Clarendon Supply	\$1,000,000	\$1,000,000	\$1,000,000	\$17,668	\$13,057	\$969,275	3%	3%
Columbus Avenue Pipeline	\$1,098,503	\$1,098,503	\$1,098,503	\$797,031	\$0	\$301,472	73%	73%
ESER 2014 Assessments	\$1,229,551	\$1,229,551	\$1,229,551	\$1,156,242	\$28,430	\$44,879	96%	96%
FWSS Street Street Crossings	\$0	\$0	\$0	\$0	\$0	\$0	-	-
Irving Street Pipeline	\$8,838,875	\$8,838,875	\$8,838,875	\$66,320	\$0	\$8,772,555	1%	1%
Lake Merced Flexible System	\$1,020,000	\$1,020,000	\$1,020,000	\$126,555	\$3,917	\$889,528	13%	13%
Mclaren Tank Flexible System	\$1,000,000	\$1,000,000	\$1,000,000	\$25,503	\$0	\$974,497	3%	3%
Sunset Reservoir Flexible System	\$1,010,000	\$1,010,000	\$1,010,000	\$34,731	\$15,483	\$959,786	5%	5%
Twin Peaks Reservoir	\$782,000	\$782,000	\$782,000	\$643,518	\$0	\$138,482	82%	82%
University Mound East Pipeline	\$1,056,838	\$1,056,838	\$1,056,838	\$124,372	\$13,486	\$918,979	13%	13%
EFWS 2014 Program (CUWAW2 00)	\$35,469,725	\$35,469,725	\$35,469,725	\$232,464	\$42,667	\$35,194,596	1%	1%
<b>Emergency Firefighting Water System (EFWS)</b>	<b>\$54,065,000</b>	<b>\$54,065,000</b>	<b>\$54,065,000</b>	<b>\$3,970,795</b>	<b>\$117,040</b>	<b>\$49,977,167</b>	<b>7%</b>	<b>7%</b>
<b>Oversight/Accountability &amp; Cost of Issuance</b>	<b>6,800,000</b>	<b>6,800,000</b>	<b>2,378,790</b>	<b>1,800,356</b>	<b>560,962</b>	<b>17,471</b>	<b>35%</b>	<b>99%</b>
<b>TOTAL</b>	<b>400,000,000</b>	<b>400,000,004</b>	<b>210,251,174</b>	<b>87,016,902</b>	<b>17,480,319</b>	<b>105,753,952</b>	<b>41%</b>	<b>26%</b>

# Earthquake Safety and Emergency Response Bond Program

---

(ESER 2010 & 2014)

## Attachment 3 – Component Schedules

Earthquake Safety and Emergency Response Bond Program  

---

(ESER 2010 & 2014)

Attachment 4 – Encumbrance and Spend-Down Schedules