



Earthquake Safety and Emergency Response Bond Program 2010 & 2014

Quarterly Status Report

January through March 2020

London N. Breed
Mayor

Alaric Degrafinried
Acting Director

Ronald Alameida
Acting Deputy Director
and City Architect

Building Design & Construction
30 Van Ness Ave., 4th floor
San Francisco, CA 94102
tel 415-557-4602

sfpublicworks.org
facebook.com/sfpublicworks
twitter.com/sfpublicworks



TCFSD – Structural Steel Erection
(March 27, 2020)



FS 28 – New Apparatus Bay Doors Installed
(February 13, 2020)



FS 35 – Structural Steel Complete
(March 31, 2020)



FS 31 – New Generator with 72-hr Runtime
(February 26, 2020)

Prepared for the:

- Office of the Chief Medical Examiner
- San Francisco Fire Department
- San Francisco Police Department
- Public Utilities Commission

Submitted by
Charles Higuera, FAIA
Program Manager

Earthquake Safety and Emergency Response Bond Program (ESER 2010 & 2014)

Table of Contents

Executive Summary.....	1
Program Summary and Status	3
Public Safety Building (ESER 2010).....	3
Neighborhood Fire Stations (ESER 2010).....	5
Neighborhood Fire Stations (ESER 2014).....	9
Emergency Firefighting Water System.....	16
Office of the Chief Medical Examiner (OCME).....	17
Traffic Company & Forensic Services Division (ESER 2014)	19
Police Facilities (ESER 2014).....	22
Budget, Funding and Expenditures	24
ESER 2010.....	24
ESER 2014.....	25
Attachment 1 – Contact Information.....	26
Attachment 2 – Schedule.....	27

Earthquake Safety and Emergency Response Bond Program (ESER 2010 & 2014)

Executive Summary

The \$412.3 million **Earthquake Safety and Emergency Response 2010 (ESER 2010) Bond Program** consists of three components: **Public Safety Building, Neighborhood Fire Stations & Support Facilities**, and **Auxiliary Water Supply System**. In this reporting period, under the *Neighborhood Fire Stations, Station 5* achieved final completion. *Additional Focused Scope* category projects within the *Neighborhood Fire Stations* component are proceeding apace, adhering to stipulated schedules and budgets.

The \$400 million **Earthquake Safety and Emergency Response 2014 (ESER 2014) Bond Program** consists of five components: **Office of the Chief Medical Examiner, Traffic Company & Forensic Services Division, Neighborhood Fire Stations, Emergency Firefighting Water System, and Police Facilities**.

The *Office of the Chief Medical Examiner* project was inaugurated in November 2017 and is fully operational. The Executive Architect's final payment is pending LEED Gold certification which is under review by the U.S. Green Building Committee (USGBC).

At the Capital Planning Committee meeting of April 30, 2018, Capital Planning staff directed the ESER Program Manager to suspend four (4) ESER 2014 projects – 2 police and 2 fire – to approximate the \$8.645M needed to align with the modified *Traffic Company & Forensic Services Division* project scope. These projects will remain suspended until the trade bid packages are largely bought-out and the true TCFSD budget deficit understood, expected to occur in December 2019 to spring 2020.

Under *Neighborhood Fire Stations* component, the steel float arrived at Treasure Island where the superstructure for *Fireboat Station 35* will be built; the *Focused Scope* category projects are proceeding apace, adhering to stipulated schedules and budgets.

Under *Police Facilities* component, the *Northern, Taraval, and Richmond Station Renovation Project* is scheduled to be completed in April 2020; the *Park and Ingleside Station Project* achieved Substantial Completion on February 19, 2020; work on the *Bayview and Tenderloin Station Project* is projected to be finished by May 2020.

The Public Utilities Commission manages the projects under the *Auxiliary Water Supply System* and the *Emergency Firefighting Water System* components for both programs. Construction completed on the Ashbury Bypass Pipeline (2500J) contract and construction continued on the Pumping Station 2 (WD-2687) contract. Bids for Clarendon Supply Pipeline (WD-2861) are due in May 2020. Funding and award for 19th Ave Pipeline (2652J) is underway. The design-build

Earthquake Safety and Emergency Response Bond Program (ESER 2010 & 2014)

contract for Terry Francois Boulevard/Mission Rock/Warriors Way Pipeline (DB-129.1) was awarded and design is underway.

To date, the ESER 2010 program has received the proceeds of six bond sales totaling \$412,300,000 and in addition has received interest earned with a current total appropriation of \$415,372,929. The ESER 2014 program has received the proceeds of three bond sales totaling \$397,988,157, inclusive of savings from cost of issuance which has been appropriated to the other program components.

Please refer to the following report for further details or visit the ESER website at www.sfearthquakesafety.org for previously issued reports.

Program Summary and Status

Public Safety Building (ESER 2010)



Photo © Tim Griffith, 2015

Location: Block 8 in the Mission Bay South Redevelopment Area. The block is bounded by Mission Rock, Third, and China Basin Streets.

Project Description: The Public Safety Building (PSB) is meant to provide a new venue for the SFPD Headquarters – effectively the command and control administration of the City’s police department – and includes the relocation of Southern District Station and a new Mission Bay Fire Station #4. Included in the project is the reuse of Fire Station #30, which will serve as the Arson Task Force HQ and provide a community meeting room at the ground level. Historic resource consultants have determined that the existing fire station is eligible for the National Register of Historic Places. Consistent with the Mission Bay SEIR Addendum No. 7, Mitigation Measures, Item D.02, this facility will be retained and reused in a manner that preserves its historic integrity. The other components of the project will be designed to be respectful of the historic integrity of the existing fire station.

Project Background: The functionality of the entire police department in the event of a major catastrophe relies on the ability of the police leadership within police command center

Earthquake Safety and Emergency Response Bond Program (ESER 2010 & 2014)

headquarters to promptly and properly coordinate public safety services in the city. The district station plays an equally critical role in providing responsive public safety to residents of San Francisco in a timely manner. This station deploys officers 24/7 to the Southern District, who are the first responders to public calls for service, as well they provide support to other first responders including the Fire Department, Medical Examiner, and emergency medical services.

Project is complete and the facility is occupied.

Project Budget: Project Cost, inclusive of all change orders to date, tracked to within the Total Project Budget of \$243M (GO Bonds and general funds).

Earthquake Safety and Emergency Response Bond Program (ESER 2010 & 2014)

Neighborhood Fire Stations (ESER 2010)

Component Description: The ESER bond will renovate or replace selected fire stations to provide improved safety and a healthy work environment for the firefighters. The selected stations are determined according to their importance for achieving the most effective delivery of fire suppression and emergency medical services possible.

Background: All of the 43 San Francisco Fire Stations have, as a result of minimal deferred maintenance over decades, yielded building conditions that potentially compromise the safety and health of firefighters. Many stations have structural/seismic and other deficiencies that could inhibit their continuous functionality. It is assumed that some may not be operational after a large earthquake or other disasters, hindering the ability of the firefighters to respond to calls for service. Seismic capacity study of key fire stations –10 of 43- has yielded necessary insight into their ability to sustain operational effectiveness. Additional stations will be examined as funding is provided.

Prior to approval of the bond program, the majority of the City's fire stations, and support facilities were generally assessed for their respective condition and to identify vulnerabilities or deficiencies that could compromise their essential role as deployment venues for first responders.

For budget planning purposes, the assessment reports were reviewed by cost estimators who prepared estimates of the cost of correcting the conditions noted in the assessments. The cost estimates indicate only the overall "order of magnitude" of the various facility deficiencies and relative proportions of various types of work.

Preliminary assessment of the neighborhood fire stations indicate that the sum of all existing maintenance generated deficiencies would require a budget exceeding \$350M to correct, significantly more funds than are available in this bond for such purposes. Therefore, additional detailed planning is required to focus the expenditures of this bond towards the most beneficial and cost-effective immediate rehabilitation and/or improvement projects.

A list of projects to be completed by the ESER 2010 bond was identified by Public Works and the Fire Administration and accepted by the Fire Commission at their meeting of September 23, 2010.

The ESER 2010 bond program is anticipated to complete improvements to 24 of the 43 neighborhood fire stations. The approved slate of projects was presented to the SF Fire Commission on April 26, 2012.

In addition, Public Works certified two Master Job Order Contracts (JOC) with specialty door contractors, National Garage Door and Byron Epp, for the remaining Apparatus Bay Door Replacements. ESER 2010 will fund the replacement of apparatus bay doors at ten stations. Scoping and pricing for the work is underway with material procurement anticipated to begin in Fall 2019.

Earthquake Safety and Emergency Response Bond Program (ESER 2010 & 2014)

The following is a detailed status per project:

Seismic Projects

Fire Station No. 16 (Marina District)

Design Services:

- Architecture: San Francisco Public Works
- Structural, MEP, and Fire Alarm Engineering: San Francisco Public Works
- Civil Engineering: Parsons Brinckerhoff

General Contractor: Roebuck Construction

Schedule: Substantial completion was achieved on January 10, 2019. As a result of the overall delay of the project, Public Works has assessed liquidated damages from July 17, 2018 to January 10, 2019, in the amount of \$445,000. SFFD began occupying and operating out of the new station on January 16, 2019. A ribbon cutting ceremony was held on January 31, 2019. Final completion was achieved on July 18, 2019.



Photo © Alejandro Velarde, 2019

Fire Station No. 5 (Fillmore District)

Design Services:

- Architecture: San Francisco Public Works
- Structural Engineering: San Francisco Public Works
- MEP, Fire Alarm, and Civil Engineering: GHD

General Contractor: Alten Construction

Schedule: SFFD began occupying and operating out of the station on April 29, 2019. A ribbon cutting ceremony was held on May 1, 2019. Final Completion was achieved on in February 19, 2020.



Photo © Alejandro Velarde, 2019

Fireboat Station 35: (See ESER 2014 this report)

Fireboat Station 35 will occur within ESER 2014 Program, however, the pre-design and CEQA and environmental review costs of \$687,125 occurred under ESER 2010. The budget that was identified for Station 35 was funded by ESER 2010 and the Fire Facilities Bonds funds totaling \$17M. The ESER 2010 funding will be used to offset Station 5 and 16. The Fire Facilities Bond funds will continue to supplement ESER 2014 funds for Station 35.

Earthquake Safety and Emergency Response Bond Program (ESER 2010 & 2014)

Equipment Logistics Center (ELC):

The ELC project was identified after the passage of the bond – it was suggested as a project combining the Bureau of Equipment (BOE) and Emergency Medical Services (EMS). In this configuration, the total functional program area makes it infeasible to occur at the current EMS venue at 1415 Evans; more significantly, the budget for such a project is not available within the ESER 2010 NFS funding.

SFFD requested that Public Works prepare a program analysis and cost estimate for the EMS apart from the BOE for consideration in the proposed 2016 Public Health and Safety Bond – which received 79 percent voter approval in June 2016.

Comprehensive Project: Station 36

Project was successfully completed and SFFD reoccupied the station on November 19, 2014.

Focused Scope Projects

Design services:

- Public Works for Roofing, Envelope, Apparatus Bay Door Replacement, Showers, and Sidewalk categories of Focused Scope.
- GHD (as-needed electrical engineering consultants) for Generator Replacement projects.

Roofs – 15 Stations

Summary: The scope consists of installing new roofing systems and upgrading exhaust fans at fifteen (15) stations (FS 2, 6, 10, 13, 15, 17, 18, 26, 28, 31, 32, 38, 40, 41, and 42).

Detail: All work is complete.

Exterior Envelope – 16 Stations

Summary: The scope consists of paint and ancillary work to prevent water intrusion at sixteen (16) stations (FS 2, 6, 10, 13, 15, 17, 18, 26, 28, 31, 32, 38, 40, 41, 42, and 49).

Detail: All work is complete.

Emergency Generator Replacement – 5 Stations

Summary: The scope consists of installing new emergency generators and related ancillary scopes of work at five (5) stations (FS 6, 12, 15, 17, and 21).

Detail: All work is complete.

Shower Reconstruction – 9 Stations

Summary: The scope of work consists of installing new shower stalls including shower pans, shower heads, divider walls, glass doors, floor drains, p-traps, access panels, and ancillary scopes of works at

Earthquake Safety and Emergency Response Bond Program (ESER 2010 & 2014)

nine (9) stations (FS 6, 13, 15, 17, 18, 26, 38, 40, and 41). Stations 17 and 18 were put on hold by SFFD due to scope complexity.

Detail: All work is complete.

Mechanical Scope – 15 Stations

Summary: The scope is structured into two phases: Phase 1 – Investigation and Scope Validation, and Phase 2 – Execution of Work. Work was completed at fifteen (15) stations (FS 2, 6, 10, 13, 15, 17, 18, 26, 28, 31, 32, 38, 40, 41, and 42).

Detail: All work is complete.

Window Repair – 12 stations

Summary: The scope consists of installing new latch, handle, weep holes, sealant and weather-strip to existing windows, replacing broken panes of glasses, and adjusting alignment and resealing the perimeter of the frame to water tight at twelve (12) stations (FS 2, 6, 17, 25, 26, 28, 31, 32, 38, 40, 41, and 42).

Detail: All work is complete.

Additional Focused Scope

Summary: Additional Focused Scope includes Apparatus Bay Door Replacement at multiple Fire Stations and Exterior Envelope Painting at Fire Department Headquarters. In addition, in July 2017, SFFD requested that additional Fire Stations receive Additional Generator Replacements. The funding allocated for Additional Generators will be applied toward a prioritized list of Fire Stations selected by SFFD.

Detail:

- **Emergency Generator Replacement – 1 Station (FS 14)**
Plans were submitted to DBI for building permit on November 25, 2019.
- **Apparatus Bay Door Replacement – 10 Stations – 90% complete.**
National Garage Door (NGD) received NTPs for all Fire Stations: (1) Stations 8, 12 and 28 on 10/21/19, (2) Stations 14, 18, 20, and 26 on 11/25/19 and (3) Stations 33, 39, and 43 on 10/28/19. Installation is 90% complete and Final Completion of all stations will occur on or before 5/10/20.
- **Exterior Envelope – SFFD Headquarters**
All work is complete.

Project Budget:

Refer to the [Budget, Funding and Expenditures – ESER 2010](#).

Earthquake Safety and Emergency Response Bond Program (ESER 2010 & 2014)

Neighborhood Fire Stations (ESER 2014)

Component Description: The ESER 2014 bond program continues the work of ESER 2010 bond, categorizing projects according to three sub - categories of: Focused Scope, Comprehensive, and Seismic. The ESER 2014 bond program will continue to address identified and prioritized needs at Fire Stations that were previously not addressed under the 2010 program. Significant construction projects will have been completed at all SFFD Fire Stations at the conclusion of the 2010 and 2014 bond programs.

SFFD approved the NFS Focused Scope, Comprehensive and Seismic budget portfolio in April 2015. In October of 2017, SFFD approved an updated budget revision.

Design services are being provided by Public Works Bureaus of Architecture & Engineering, unless otherwise noted.

The following is a detailed status per project:

Seismic Projects:

Fireboat Station 35 at Pier 22½



Embarcadero Perspective of West and South Elevations

Design-Builder: Swinerton-Power, a Joint Venture and Shah Kawasaki Architects

FLOAT (float, steel piles, observation deck, vehicle access platform, gangway)

Design Phase: October 2017 – November 2018

PORT Permits: November 2018 – July 2019

Construction Phase*: July 2019 – January 2020

Earthquake Safety and Emergency Response Bond Program (ESER 2010 & 2014)

*Fabrication of float through delivery to Treasure Island; includes demolition activities at Pier 22½.

BUILDING

Design Phase: October 2017 – July 2019

PORT Permits: March 2019 – November 2019

Construction Phase*: January 2020 – February 2021

*Construction of building superstructure on top of float at Pier 1, Treasure Island and pile driving activities (guide piles for float and piles for public access platform) at Pier 22½.

The Port issued permits for fabrication of the float and other steel elements (piles, observation deck, vehicle access ramp, gangway) and demolition activities on July 25, 2019 and August 19, 2019, respectively. Building permit was issued on November 22, 2019.

Pier 26 Fireboat Berths

Design services: COWI North America

Contractor: Vortex Marine Construction

Percentage complete (as of 3/31/2020): 99%

Delays to construction are due to unforeseen conditions during excavation of the Embarcadero sidewalk, which required the relocation of two conduits. Additional delay due to rain prevented the placement of the concrete sidewalk as scheduled.

Difficulties in timely coordination of electrical work and inspections with PG&E was a major factor that contributed to the delay. The switchgear was inspected and approved to energize by PG&E on December 6, 2019. Remaining electrical work to be completed by end of April 2020.



Fireboat No. 3, the Saint Francis, moored at Pier 26

Earthquake Safety and Emergency Response Bond Program

(ESER 2010 & 2014)

Comprehensive Projects:

Fire Station 3 & 7

FS 3 was determined to be a potential collapse hazard in the event of a major earthquake based on the structural assessment received from the Public Works IDC-Structural study. SFFD directed the design work to stop and will consider plans for a new FS 3 in its overall seismic portfolio of future bonds. FS 7 is on hold, since a complete rebuild is being considered as part of the ESER 2020 bond program.

Focused Scope Projects:

The NFS team has moved forward with planning, design, bidding and construction of the Focused Scope projects in all 9 of the categories: apparatus bay doors, roof replacements, shower renovation, exterior envelope, windows, sidewalk, emergency generator, and mechanical projects. ESER 2014 Focused Scope projects upgrade 35 Fire Stations in these categories.

Design services are being provided by Public Works BDC Architecture, IDC Mechanical and IDC Structural for Roofing, Envelope, App Bay Door Replacement, Showers, Windows, and Sidewalk categories of Focused Scope. GHD, an as-needed electrical engineering consultant, is providing design services for Generator Replacement projects.

Apparatus Bay Doors (37 Fire Stations):

Design has been completed by Public Works BDC Architecture for the Apparatus Bay Door Replacement projects at all remaining fire stations. Work will be divided between ESER 2010 and ESER 2014, within parameters of allocated budgets under each bond.

- Package 1 (FS 15; including Ancillary Work)
This project is complete.
- Package 2 Ancillary (not used)
See Package 4 below.
- Package 3 App Bay Door Replacement (FS 2, 11, 13, 19, 24, 31, 34, 40, 41) is complete.
- Emergency Declaration – Fire Station 3 is complete.
- Package 4 Ancillary Work for new 4-Fold Doors (FS 6, 9, 10, 11, 12, 14, 17, 20, 21, 22, 23, 26, 32, 37, 38, 42, 44) is complete.
- Package 5
The scope is to replace existing app bay doors with new telescoping and coiling overhead doors at multiple Fire Stations. (5) NTPs have been issued to JOC Byron Epp, and

Earthquake Safety and Emergency Response Bond Program (ESER 2010 & 2014)

procurement is underway to replace app bay doors at fifteen (15) stations (FS 6, 7, 9, 10, 11, 21, 22, 38, 25, 37, 42, 17, 23, 32, and 44). 20% of installation is complete, and Final Completion is anticipated on July 31, 2020.

Roofs (10 Fire Stations):

All projects in the Focused Scope Roofing category have been completed.

- Package 1 (FS 3 – Roof/HVAC/Generator Replacement)
- Package 2 (FS 40 – Roof Replacement In-kind)
- Package 3 (FS 3 & 17)
- Package 4 (Not Used)
- Package 5 (FS 9, 20, 23, 24, 29, & 43).

Showers (7 Fire Stations):

- Package 1 (FS 13, 20, 22 & 34) is complete.
- Package 2 (FS 17, 19 & 33) is complete.

Window Repairs (13 Fire Stations):

BBR was selected to perform all the work, per SFFD direction, for all window repair projects. All projects are complete:

- Package 1 (FS 9, 19, ~~24~~, & 29)
- Package 2 (Not Used)
- Package 3 (FS 25)
- Package 4 (FS 8, 20 & 21)
- Package 5 (FS 14, ~~33~~, 37 & 43):
FS 14, 37, and 43 are completed, and FS 33 sliding door project has been cancelled due to obsolescence of repair parts. FS 33 sliding doors will be considered for replacement in a future bond.
- Package 6 (FS 11, 12 & 23)

Earthquake Safety and Emergency Response Bond Program

(ESER 2010 & 2014)

Exterior Envelope (8 Fire Stations):

- Package 1 (FS 8, 20, 23 & 29):
The scope includes power wash and new paint to exterior facade of the stations. BBR was selected to perform the work per SFFD direction.
 - In November 2018, BBR completed work at FS 20.
 - In November 2019, BBR completed work at FS 8
 - In November 2019, BBR commenced with work on FS 29 and will resume work when the Order of the Health Officer No. C19-07 (Shelter in Place) is lifted.
 - BBR has refused work at FS 23 in this package. A contractor will be procured through a Job Order Contract (JOC) for work at FS 23 in 2020.

- Package 2 (FS 24 & 34) is on hold until late 2020.

- Package 3 (FS 11):
The scope of work includes repair deficiencies at the exterior envelope, power wash all surfaces, and prepare substrates required to receive new paint at the exterior façade. This project will be folded into the Seismic Hose Tower Removal project, a project that is funded by the 2016 Public Health and Safety Bond. Construction is anticipated to start when the Order of the Health Officer No. C19-07 (Shelter in Place) is lifted.

- Package 4 (FS 22) is complete.

Mechanical (TBD)

- Package 1 (8, 9, 14, 20 & 41):
This project is on hold.

Earthquake Safety and Emergency Response Bond Program (ESER 2010 & 2014)

Emergency Generators:

- Package 1 (FS 31):

Scope of work is to replace the existing emergency generator with a new generator and fuel tank to meet SFFD's 72-hour emergency run time protocol. Work is Substantially Complete and Final Completion is anticipated to be completed in June 2020, when the Order of the Health Officer No. C19-07 (Shelter in Place) is lifted.



- Generator Replacement at FS 2:

The scope of work consists of replacement of an existing roof top generator with a new generator, structurally strengthen the roof to support the new fuel tank with capacity for 72-hour run time, and provide new fuel fill port and piping to the generator.

On November 20, 2019, this project was informally bid to a pool of As-Needed electrical contractors. The bid results exceeded the \$600k limit allowed under informal bid procurement. This project will rebid in fall 2020, with construction anticipated to start in early 2021.

- Generator Replacement at FS 19:

The scope of work will consist of replacement of an existing generator with a new generator and fuel tank to meet SFFD's 72-hour emergency run time protocol. In addition, GHD has recommended the replacement of infrastructure components including existing electrical switchgear, transfer switch, distribution panel board, and new feeders. This project is on hold.

Sidewalks/Slabs

- Package 1 (FS 13) is complete.
- Package 2 (FS 31) is complete.
- Package 3 (FS 26) is complete.
- Package 4 (FS 20) was eliminated at SFFD's request.

Access Control Systems (35 Fire Stations):

This work is complete.

Earthquake Safety and Emergency Response Bond Program (ESER 2010 & 2014)

Bureau of Equipment and Emergency Medical Services

SFFD requested Public Works to prepare a program analysis and cost estimate for the Bureau of Equipment (BOE) and the Emergency Medical Services (EMS) for consideration as a project or projects to be funded by ESER 2014.

The two projects were found to be infeasible to deliver within ESER 2014.

The EMS Facility project was deferred to Public Health and Safety Bond which was approved by 79 percent of the voters in June 2016 under the new project name of Ambulance Deployment Facility (ADF). Public Works completed program analysis and conducted test fits for the EMS Facility at four locations. The optimal site was found to be a consolidation of two properties owned by the City, the equipment yard located behind Fire Station No. 9, at 2245 Jerrold Ave., combined with an adjacent vacant railroad right-of-way that extends from Jerrold Avenue to McKinnon Avenue. The budget for the EMS Facility is \$44M, for a project scheduled to be completed in 2020.

Public Works conducted test fits of the BOE Facility at two locations. The optimal scenario was found to be renovation of the existing SFFD EMS facility at 1415 Evans, which would become available after EMS is relocated. Therefore, further work on the BOE Facility project is deferred to a subsequent bond program to be determined.

Earthquake Safety and Emergency Response Bond Program (ESER 2010 & 2014)

Emergency Firefighting Water System

Component Description: The Earthquake Safety and Emergency Response Bonds will seismically improve the Emergency Firefighting Water System cisterns, pipelines, tunnels, and physical plant.

Background: The Emergency Firefighting Water System is vital for protecting against the loss of life, homes, and businesses from fire following an earthquake. It is also used for the suppression of non-earthquake multiple-alarm fires.

Status:

Planning and Design

1. Lake Merced Pipeline – Install new 20” AWSS pipe from Lake Merced Pump Station to Vidal Drive / Higuera Avenue intersection. Design completion 12/2020.
2. Westside Potable EFWS Pipeline – Install new Potable Emergency Firefighting Water System pipeline in Richmond and Sunset areas. Planning completion 12/2020.

Construction

3. 19th Avenue Pipeline – Install new 20” Auxiliary Water Supply System (AWSS) pipe on 19th Avenue from Irving Street to Kirkham Street as part of Public Works’ 19th Avenue Roadway Improvements, Contract 2652J. Project funding and award is occurring.
4. Terry Francois Blvd/Mission Rock/Warriors Way Pipeline – Install new 20” AWSS pipe on Terry Francois Blvd from Mission Rock Street to Warriors Way as part of SFPUC contract DB-129.1. This design-build contract was awarded. Design work has started, but its completion is dependent on virus restrictions.
5. Ashbury Bypass Pipeline – Install new 20” AWSS pipe near Ashbury Heights Tank as part of Public Works’ Clayton St, Clipper St, and Portola Dr. Pavement Renovation, Sewer Replacement and Water Installation, Contract 2500J. AWSS construction is completed.
6. Clarendon Supply – Provide a new AWSS water supply and pipe near the crest of Clarendon Avenue at Dellbrook Avenue. Bids are due in May 2020.
7. Pumping Station 2 – Improve the building structure’s seismic performance. Construction completion 12/2020.
8. Street Valve Motorization – Motorize street valves on AWSS pipelines for improved water flow control. Construction completion 12/2020.

Earthquake Safety and Emergency Response Bond Program (ESER 2010 & 2014)

Office of the Chief Medical Examiner (OCME)



Project Description: The project will relocate the Office of the Chief Medical Examiner (OCME) to One Newhall Street in the India Basin Industrial Park. The new facility will house about 50 employees who are organized into the four units of the OCME: Field Investigations, Medical/Autopsy, Laboratory, and Administration.

One Newhall Street was an existing 28,000 gsf industrial warehouse which was almost entirely demolished, and a second floor was added within the existing footprint of the building resulting in a seismically safe 46,000 gsf facility.

Background: The existing OCME is located at 850 Bryant also known as the Hall of Justice (HOJ). The HOJ is over 50 years old and seismically deficient. In the event of a major earthquake, this building is not expected to be operational. This project is part of a larger strategy to replace the Hall of Justice established in the City's 10-Year Capital Plan as the *Justice Facilities Improvement Program (JFIP)*.

The OCME is accredited by the National Association of Medical Examiners (NAME). During the previous accreditation in 2008, the City was advised that the existing facility is undersized, has

Earthquake Safety and Emergency Response Bond Program (ESER 2010 & 2014)

multiple deficiencies that are currently mitigated by operational protocols, and the facility should be replaced to assure continued accreditation.

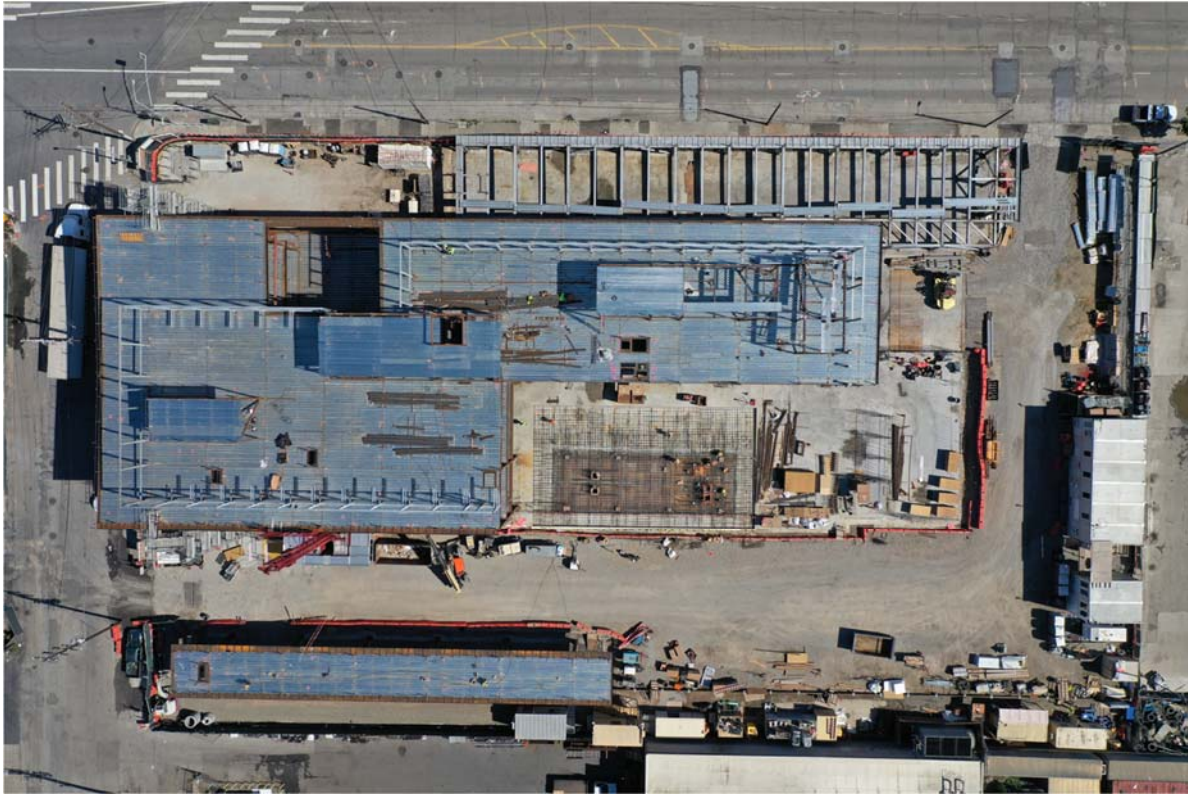
Project Status:

LEED Gold is the mandatory goal for this project (minimum 60 points required to be awarded for the Gold certification). Project was registered with USGBC on April 9, 2014. Out of submitted 64 points, USGBC awarded 52 points to the project; 8 points have been submitted for review. Awaiting USGBC decision

Project is complete and the facility is occupied. Project Budget: Project Cost, inclusive of all change orders to date, tracked to within the Total Project Budget of \$75M (GO Bonds and general funds).

Earthquake Safety and Emergency Response Bond Program (ESER 2010 & 2014)

Traffic Company & Forensic Services Division (ESER 2014)



Aerial Photo of 1995 Evans Avenue (March 27, 2020)

Project Description: The project will relocate the SFPD Forensic Services Division (FSD) and SFPD Traffic Company (TC) to a site located at 1995 Evans Avenue, San Francisco. The amount of space requested for the Traffic Company was determined based on the Police Facilities Master Planning Study dated August 23, 2012.

The project is being developed to support a Full Time Employee (FTE) forecast for 2020 FSD demand of approximately 109 for FSD, approximately 100 for the Traffic Company and approximately 9 for the Real Estate Division's building engineering and custodial services. The size of the facility is approximately 100,000 gross square feet and allows for a potential future expansion if required.

Project Background: The SFPD Traffic Company is currently located at the Hall of Justice (HOJ) at 850 Bryant Street. The SFPD FSD is currently located in two facilities. The FSD Administration, Crime Scene Investigations, and Identification units are housed at the HOJ. The FSD Crime Lab is housed in Building 606 at the Hunters Point Shipyard.

The HOJ is over 50 years old and seismically deficient. In the event of a major earthquake, this building is not expected to be operational. This project is part of a larger strategy to replace the

Earthquake Safety and Emergency Response Bond Program (ESER 2010 & 2014)

Hall of Justice, established in the City's 10-Year Capital Plan as the Justice Facilities Improvement Program (JFIP).

The Hunters Point Shipyard is being transferred from the U.S. Navy to the City. The City plans to develop the Shipyard as a residential area. The area in which Building 606 is located is planned to be public open space as an amenity for nearby residences. Prior to the transfer of the property, the Navy is obligated to remove and mitigate hazardous materials in the soil.

Project Status: DBI issued the Demolition Permit on May 8, 2018. Additional existing below grade foundation remains were discovered in July, August and September delaying completion of demolition until the fourth quarter of 2018. The Site Permit application was submitted to DBI on December 21, 2017 and was issued on December 5, 2018, inclusive of the various approvals required from Planning, DBI, SFFD, DPH and BSM. A five-month review duration was anticipated to obtain the Site Permit, which took nearly 12 months, resulting in further delay to subcontractor procurement and construction activities. Attempts to mitigate these delays include a commitment from DBI to assist in expediting the permit addendum schedule. Some success has been realized, with the deep foundation addendum S1 submitted to DBI on December 14, 2018 and issued on April 3, 2019. The foundation and superstructure addendum S2 were submitted to DBI on March 7, 2019 and issued on July 23, 2019. The 95% Construction Documents milestone was reached on August 26, 2019. From this several permit addenda were submitted to DBI on August 27, 2019. These addenda were S3: Building & MEP, S4: Fire Sprinkler and S5: Fire Alarm. Addendum S6: Emergency Responder Radio Communication System was submitted on September 24, 2019. The 100% Construction Documents milestone was reached in January 2020.

Clark Construction was selected to be the Construction Manager/General Contractor (CM/GC) through a competitive solicitation in July 2017. Clark leads a team of "Core Trade Subcontractors," specifically: C/S Erectors for the exterior building envelope, Southland Industries for mechanical and plumbing, and Rosendin Electric for electrical. Their Pre-construction initial estimate in January 2018 reported a nearly \$30M over budget amount. Cost reduction efforts were presented to the Capital Planning Committee (CPC) on April 30, 2018. The presentation described that after two separate value-engineering (cost reduction) efforts yielding reductions of \$12.35M + \$14.3M without diminishing adversely the integrity of the program, and inclusive of additional bond generated funding of \$8.7M made available to the TCFSD, the \$6.65M budget deficit remained. When factoring appropriate contingency to this \$6.65 million budget deficit, it has produced an \$8.65 million deficit in funding. The resulting outcome of the CPC meeting, Capital Planning staff directed the ESER Program Manager to suspend four (4) ESER 2014 projects – 2 police and 2 fire – to approximate the \$8.645M. These projects will remain suspended until such time as the trade bid packages are largely bought-out

Earthquake Safety and Emergency Response Bond Program (ESER 2010 & 2014)

and the true TCFSD budget deficit understood, expected to occur in December 2019 to spring 2020.

Through March 2020, approximately 98% of the estimated cost of work has been bid and procured, including the MEP and exterior enclosure scopes represented by the design-build Core Trade Subcontractors. The indicator pile program was successfully completed allowing new construction to begin on October 7, 2019. Deep foundation pile installation was completed in December 2019 with mud slab and waterproofing following. The mat slab was placed in January 2020. Erection of structural steel began in February 2020 and a topping out ceremony was held on April 3, 2020.

The project is obligated to achieve LEED Gold certification.

Schedule:

- Pre-Construction Services NTP - November 27, 2017
- Pre-Construction Services Full Team Kick-off Meeting - November 30, 2017
- Indicator Pile Program construction Services NTP - August 19, 2019
- New building construction Services NTP - October 7, 2019
- Substantial Completion - October 2021
- Final Completion - Fall 2021



Structural Steel Topping Out Ceremony – April 3, 2020

Earthquake Safety and Emergency Response Bond Program (ESER 2010 & 2014)

Police Facilities (ESER 2014)

Component Description: The project includes various focused scope projects at 12 police facilities (9 district stations and 3 support facilities – Southern Station is new, built within the Public Safety Building) across the City. The work scopes are derived from a series of onsite investigations, observations, and professional evaluations of different building systems that include mechanical, electrical, plumbing, fire protection, and structural safety. It also includes assessments of building envelope (i.e. integrity of roof, doors, windows, and walls), ADA accessibility requirements, as well as other site improvements that ensure safety and security.

The project's overall budget is \$30M. The cost to address all police facilities' issues is far in excess of this budget. Project priorities are according to building deficiencies that potentially compromise police staff and the public's health and safety, and others that pertain to code compliance.

ADA PACKAGE 1

The project addresses accessibility issues at the following stations: Central, Mission, Bayview, Northern, and Tenderloin.

ADA PACKAGE 2

The project addresses accessibility issues at the following stations: Park, Ingleside, Taraval, Richmond, and Police Academy.

NEW FIREARMS SIMULATOR TRAINING FACILITY at Lake Merced

This project is completed, there are no updates.

NORTHERN, RICHMOND, TARAVAL POLICE STATION RENOVATION PROJECT

Projected substantial completion is April 2020.



New roof-top supply fan.

Earthquake Safety and Emergency Response Bond Program

(ESER 2010 & 2014)

Richmond Station:

1. Awaiting Final Building Inspection.

Northern Station:

1. Punchlist back-check in progress.

Taraval Station:

1. Testing and Air Balancing (TAB).

PARK and INGLESIDE POLICE STATION RENOVATION

Substantial completion achieved on February 19, 2020.

Final completion is projected mid-May 2020.

PARK STATION

1. Work is completed.

INGLESIDE STATION

1. Pending completion of the Air Balancing.

MEP PACKAGE 2 (BAYVIEW, TENDERLOIN)

Projected substantial completion – end of April 2020

TENDERLOIN STATION

1. Substantial completion pending sign off from DBI Electrical and the SFFD District Inspector.
2. Contractor working on punchlist items.

BAYVIEW STATION

1. Contractor working on pre-substantial punchlist items.

POLICE ACADEMY RENOVATION

This project is on-hold per Capital Planning Committee.

MISSION POLICE STATION RENOVATION

This project is on-hold per Capital Planning Committee.

Earthquake Safety and Emergency Response Bond Program (ESER 2010 & 2014)

Budget, Funding and Expenditures

ESER 2010

The budget for the ESER 2010 Bond Program is \$412,300,000. The revised budget is \$415,372,929 which includes partial interest earned thru FY2017. The following is a summary of the budget and appropriation per component:

ESER 2010: As of March 2020

Bond Components and Projects	Bond Authorized Amount	Revised Budget (ii)	Appropriations	Expenditures	Encumbrances	Balances	Expenditures/ Appropriations
Public Safety Building (PSB) (iii)	239,000,000	236,661,975	236,661,975	228,926,708	14,465	7,720,802	97%
Neighborhood Fire Stations (NFS)	64,000,000	66,906,313	66,906,313	65,099,738	502,709	1,303,865	97%
Auxiliary Water Supply System (AWSS)	102,400,000	102,400,001	102,400,001	89,880,507	5,631,906	6,887,588	88%
Oversight, Accountability & Cost of Issuance	6,900,000	2,545,864	2,545,864	2,077,820	0	468,043	82%
Public Works Program Reserve		2,443,743	2,443,743	0	0	2,443,743	0%
Appropriated Unallocated Interest		4,415,033	4,415,033	0	0	4,415,033	0%
TOTAL (i)	412,300,000	415,372,929	415,372,929	385,984,774	6,149,081	23,239,075	93%

(i) PeopleSoft financial data thru Q3 FY2020

(ii) Revised budgets based on PeopleSoft appropriations; data subject to change per clean-up efforts

(iii) PSB financial reconciliation & close out in process; project savings are intended to be reallocated to other ESER bond programs' project(s)' needs (pending necessary City approvals & PeopleSoft requirements)

The Accountability reports for the second thru sixth bond sales are available on the ESER website at <http://www.sfearthquakesafety.org/eser-reports.html>.

Expenditures and Encumbrances

The ESER 2010 expenditures and encumbrances are \$385,984,774 and \$6,149,081 respectively. Expenditures represent 93% of the total current appropriations.

Earthquake Safety and Emergency Response Bond Program (ESER 2010 & 2014)

ESER 2014

The ESER 2014 budget is \$400,000,000 and the total appropriation is \$397,988,157, including a savings from the cost of issuance currently allocated within program components. The following is a summary of the budget and appropriation per component:

ESER 2010: As of March 2020

Bond Components and Projects	Bond Authorized Amount	Revised Budget (ii)	Appropriations	Expenditures	Encumbrances	Balances	Expenditures/ Appropriations
Office of the Chief Medical Examiner (OCME)	63,895,000	67,533,024	67,533,024	67,395,692	40,292	97,040	100%
Traffic Company & Forensic Services Division (TC/FSD)	162,195,000	163,375,150	163,375,150	57,679,782	54,761,241	50,934,127	35%
Police Facilities (PF)	29,490,000	29,645,661	29,645,661	24,772,866	467,417	4,405,378	84%
Neighborhood Fire Station (NFS)	83,555,000	80,351,381	80,351,381	38,810,193	17,002,513	24,538,675	48%
Emergency Firefighting Water System (EFWS)	54,065,000	54,347,209	54,347,209	25,631,471	10,596,075	18,119,663	47%
Oversight, Accountability & Cost of Issuance	6,800,000	2,284,545	2,284,545	1,593,186	0	691,359	70%
Public Works Program Reserve		451,187	451,188	0	0	451,188	0%
TOTAL (i)	400,000,000	397,988,157	397,988,157	215,883,190	82,867,537	99,237,429	54%

(i) PeopleSoft financial data thru Q3 FY2020

(ii) Revised budgets based on PeopleSoft appropriations; data subject to change per clean-up efforts

The Accountability reports for the second and third bond sales are available on the ESER website at <http://www.sfearthquakesafety.org/eser-reports.html>.

Expenditures and Encumbrances

The ESER 2014 expenditures and encumbrances are \$215,883,190 and \$82,867,537 respectively. The expenditures represent 54% of the total current appropriations.

Earthquake Safety and Emergency Response Bond Program (ESER 2010 & 2014)

Attachment 1 – Contact Information



San Francisco Public Works | City and County of San Francisco | Building Design and Construction | Project Management
30 Van Ness Avenue, Suite 4100 | San Francisco, CA 94102 | (415) 557-4700 | sfpublicworks.org

Contact	Title	Component	Telephone No.	Cell No.	E-mail
Charles Higuera	Program Manager	ESER 2010 & 2014	(415) 557-4646	(415) 307-7891	charles.higuera@sfdpw.org
Magdalena Ryor	Project Manager	ESER 2010 NFS; ESER 2014 OCME, NFS, PF	(415) 557-4659	(415) 602-0930	magdalena.ryor@sfdpw.org
Michael Rossetto	Project Manager	ESER 2014 TC/FSD	(415) 557-4773	(415) 530-7368	michael.rossetto@sfdpw.org
Lisa Zhuo	Project Manager	ESER 2014 PF	(415) 557-4699		lisa.zhuo@sfdpw.org
Sherry Katz	Project Manager	ESER 2010 & 2014 NFS Focused Scope	(415) 557-4718		sherry.katz@sfdpw.org
Sean O'Brien	Project Mgr. Asst.	ESER 2010 & 2014	(415) 557-4694		sean.obrien@sfdpw.org
Kelly Griffin	Financial Analyst	ESER 2010 & 2014	(415) 557-4667		kelly.griffin@sfdpw.org



Public Utilities Commission
525 Golden Gate Avenue | San Francisco, CA 94102

Contact	Title	Component	Telephone No.	Cell No.	E-mail
David Myerson	Project Manager	ESER 2010 AWSS & ESER 2014 EFWS	(415) 934-5710		dmyerson@sfwater.org

Earthquake Safety and Emergency Response Bond Program
(ESER 2010 & 2014)

Attachment 2 – Schedule

EARTHQUAKE SAFETY EMERGENCY RESPONSE BOND PROGRAM
Timeline and Schedule

Description	BUDGET	Schedule		FY 11/12				FY 12/13				FY 13/14				FY 14/15				FY 15/16				FY 16/17				FY 17/18				FY 18/19				FY 19/20				FY 20/21			
				July 1, 2011		June 30, 2012		July 1, 2012		June 30, 2013		July 1, 2013		June 30, 2014		July 1, 2014		June 30, 2015		July 1, 2015		June 30, 2016		July 1, 2016		June 30, 2017		July 1, 2017		June 30, 2018		July 1, 2018		June 30, 2019		July 1, 2019		June 30, 2020		July 1, 2020		June 30, 2021	
				1st Qtr.	2nd Qtr.	3rd Qtr.	4th Qtr.	1st Qtr.	2nd Qtr.	3rd Qtr.	4th Qtr.	1st Qtr.	2nd Qtr.	3rd Qtr.	4th Qtr.	1st Qtr.	2nd Qtr.	3rd Qtr.	4th Qtr.	1st Qtr.	2nd Qtr.	3rd Qtr.	4th Qtr.	1st Qtr.	2nd Qtr.	3rd Qtr.	4th Qtr.	1st Qtr.	2nd Qtr.	3rd Qtr.	4th Qtr.	1st Qtr.	2nd Qtr.	3rd Qtr.	4th Qtr.	1st Qtr.	2nd Qtr.	3rd Qtr.	4th Qtr.	1st Qtr.	2nd Qtr.	3rd Qtr.	4th Qtr.
NEIGHBORHOOD FIRE STATIONS COMPREHENSIVE: STATION 36																																											
Baseline Budget	4,798,218	03/01/12	09/05/14																																								
Current/Approved	5,787,300	03/01/12	09/30/17																																								
Current/Projected	5,787,300	03/01/12	12/31/18																																								
SEISMIC: STATION 5 (New 3-story)																																											
Baseline Budget	13,838,757	03/01/12	05/01/17																																								
Current/Approved	21,027,983 (i)	03/01/12	09/12/19																																								
Current/Projected	21,027,983 (i)	03/01/12	06/30/20																																								
SEISMIC: STATION 9 UTILITY ISOLATION																																											
Baseline Budget	200,000																																										
Current/Approved	200,000																																										
Current/Projected	200,000																																										
SEISMIC: STATION 16 (New 2-story)																																											
Baseline Budget	8,841,656	03/01/12	01/04/16																																								
Current/Approved	14,225,070	03/01/12	05/23/19																																								
Current/Projected	14,225,070	03/01/12	07/17/20																																								

(i) Including \$139,200 FF&E general funds (for built in beds)

Earthquake Safety and Emergency Response Bond Program
(ESER 2010 & 2014)

EARTHQUAKE SAFETY EMERGENCY RESPONSE BOND PROGRAM
Timeline and Schedule

Description	BUDGET	Schedule Start Completion		FY 10/11				FY 11/12				FY 12/13				FY 13/14				FY 14/15				FY 15/16				FY 16/17				FY 17/18				FY 18/19				FY 19/20				FY 20/21			
				July 1, 2010		June 30, 2011		July 1, 2011		June 30, 2012		July 1, 2012		June 30, 2013		July 1, 2013		June 30, 2014		July 1, 2014		June 30, 2015		July 1, 2015		June 30, 2016		July 1, 2016		June 30, 2017		July 1, 2017		June 30, 2018		July 1, 2018		June 30, 2019		July 1, 2019		June 30, 2020		July 1, 2020		June 30, 2021	
				1st Qtr.	2nd Qtr.	3rd Qtr.	4th Qtr.	1st Qtr.	2nd Qtr.	3rd Qtr.	4th Qtr.	1st Qtr.	2nd Qtr.	3rd Qtr.	4th Qtr.	1st Qtr.	2nd Qtr.	3rd Qtr.	4th Qtr.	1st Qtr.	2nd Qtr.	3rd Qtr.	4th Qtr.	1st Qtr.	2nd Qtr.	3rd Qtr.	4th Qtr.	1st Qtr.	2nd Qtr.	3rd Qtr.	4th Qtr.	1st Qtr.	2nd Qtr.	3rd Qtr.	4th Qtr.	1st Qtr.	2nd Qtr.	3rd Qtr.	4th Qtr.	1st Qtr.	2nd Qtr.	3rd Qtr.	4th Qtr.	1st Qtr.	2nd Qtr.	3rd Qtr.	4th Qtr.
EMERGENCY FIREFIGHTING WATER SYSTEM (EFWS)				PRE-BOND PLANNING AND DEVELOPMENT																																											
EFWS (EARTHQUAKE SAFETY EMERGENCY RESPONSE 2010)				102,400,000																																											
June 2015	102,400,000	07/01/09	09/26/18	102,400,000																																											
Baseline	102,400,000	07/01/09	12/31/20	102,400,000																																											
Current Projection	102,400,000	07/01/09	12/31/20	102,400,000																																											
EFWS (EARTHQUAKE SAFETY EMERGENCY RESPONSE 2014)				54,065,000																																											
June 2015	54,065,000	11/06/14	12/31/20	54,065,000																																											
Baseline	54,347,209	11/06/14	12/31/20	54,347,209																																											
Current Projection	54,347,209	11/06/14	12/31/20	54,347,209																																											
EMERGENCY FIREFIGHTING WATER SYSTEM (EFWS) SUB-TOTAL				156,465,000																																											
June 2015	156,465,000			156,465,000																																											
Baseline	156,747,209			156,747,209																																											
Current Projection	156,747,209			156,747,209																																											