

# Office of the Chief Medical Examiner Building



San Francisco Arts Commission  
Civic Design Review  
**Administrative Approval**

July 20, 2015

[www.sfdpw.org](http://www.sfdpw.org)

# Office of the Chief Medical Examiner Building

1 Newhall Street, San Francisco, California

## San Francisco Arts Commission Civic Design Review

### **Administrative Approval**

for

## Phase 2: Design Development Phase 3: Construction Documents



July 20, 2015

# OCME – Agenda:

---

- **Property / Project Description**
- **Project Site**
  - **Site Landscape Plan** (updated)
  - **Architectural Site Plan** (updated)
  - **Landscape Design Plant Materials** (updated)
  - **Landscape Design Site Furnishings** (updated)
- **Architectural Renderings** (updated)
- **Exterior Building Elevations** (updated)
- **Exterior Finish Materials board** (updated)
- **Questions / Discussion**

# OCME – Property / Project Description:

## Property Information

- Address: 1 Newhall Street
- Zoning: PDR-2 will require Conditional Use approval
- Existing building 18,000 SF constructed 1984
- Existing 1-story Precast Tilt-up Structure
- Light weight Timber roof
- Partial wood mezzanine
- 25'-4" Building height
- Environmental Evaluation approval May 31, 2013

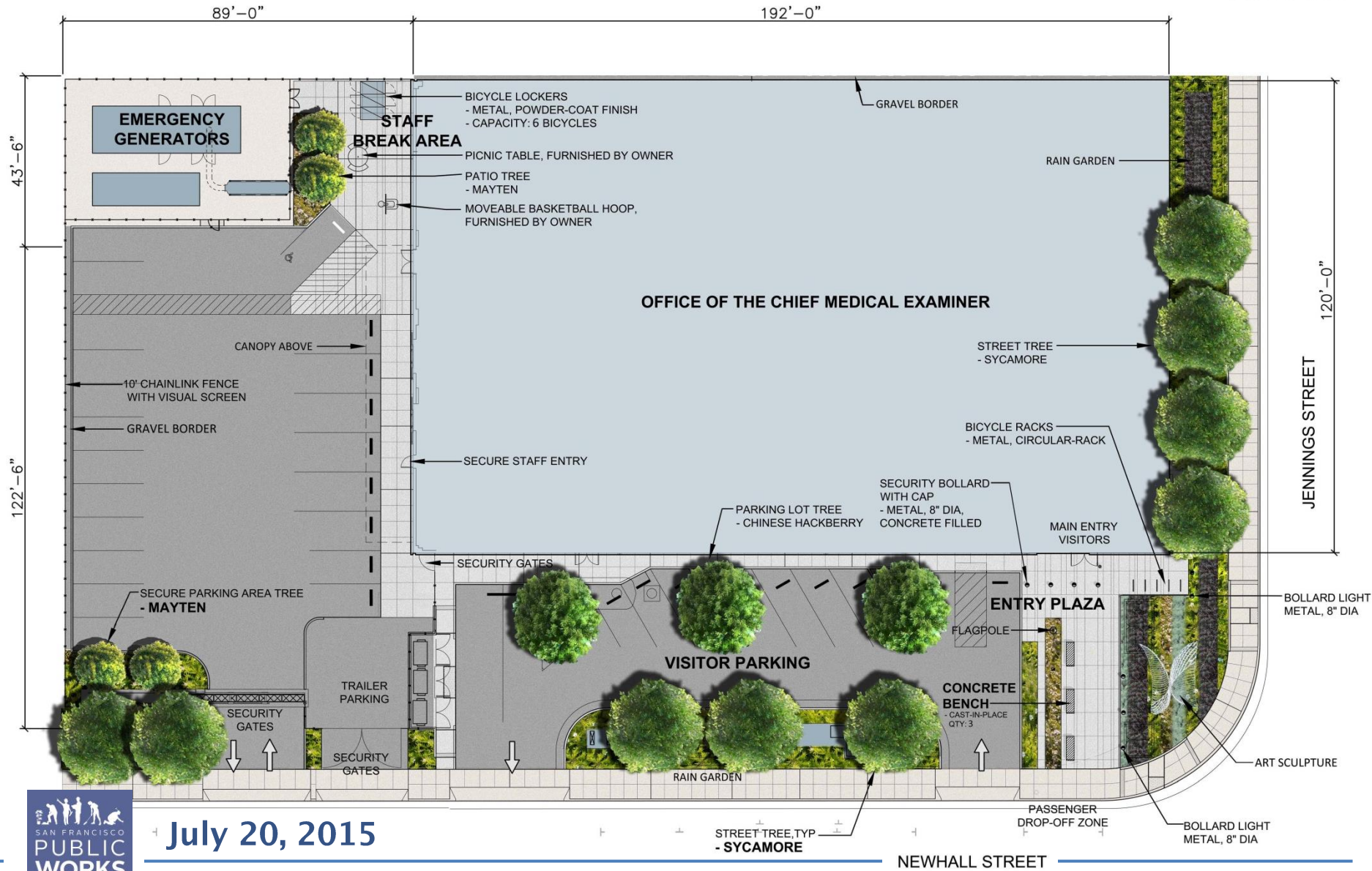
## Project Information

- Autopsy / Laboratory / Support areas
- Office and Office Support areas
- Public / Amenity
- 2-Story building, 42,218 gsf
- 50 Employees
- Parking requirements
  - 8 City vehicles
  - 6 visitor vehicles
  - 10 Secured First responder vehicles
- \$37.45 M Total Construction Cost

# OCME – Existing Site/ Building:



# OCME – Site Landscape Site:



July 20, 2015

NEWHALL STREET



# OCME – Landscape Design (Plant Materials):



Hypericum



Cream Flax



Chondropetalum



Loropetalum



Artemisia

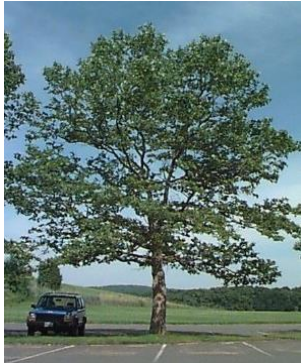


Pink Muhly

## Main Entry Plaza

Merrill  
Morris

# OCME – Landscape Design (Plant Materials):



Street Tree - Sycamore

## Newhall Street



Arctostaphylos



Carex Divulsa



Chondropetalum

## Newhall Street – Rain Garden



Street Tree -  
Sycamore

## Jennings Street



Carex Divulsa



Chinese Hackberry

## Visitor Parking



Creeping Myoporum

*Note: All tree types shown are incorporated into the landscape design. Each was selected for its appropriate size, scale, and growth - to best adapt to their planted locations.*



# OCME – Landscape Design (Plant Materials):



Mayten



Bush Anemone



Santolina

*Note: All tree types shown are incorporated into the landscape design. Each was selected for its appropriate size, scale, and growth habit - to best adapt to their planted locations.*

## Secure Parking Area - Corner Area



Mayten



Loropetalum



Screen Hedge at Generator Enclosure

## Staff Break Area

# OCME – Landscape Design (Site Furnishings):



## **Bicycle Rack**

- Circular, Metal, brushed finish metal rack



## **Bicycle locker**

- Metal, powder coat finish
- Capacity: 4 bikes (2 each)



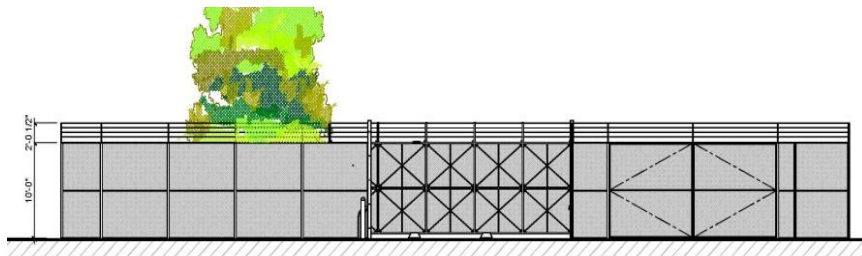
## **Security Bollard**

- Metal, brushed finish, 8" dia, concrete-filled
- Non-lighted



## **Lighted Bollard**

- Metal, brushed finish, 8" dia
- LED



## **Secure Parking entrance**

- Security Gate: Card-reader-activated box-frame roller gate, w/ obscuring fabric and barbed wire.



## **Seating Benches (2)**

- Integral colored (to match plaza area concrete) cast-in-place concrete benches,
- Smooth steel-formed concrete,
- Chamfered & eased edges, typ.

Merrill  
Morris

# OCME – Architectural Renderings:



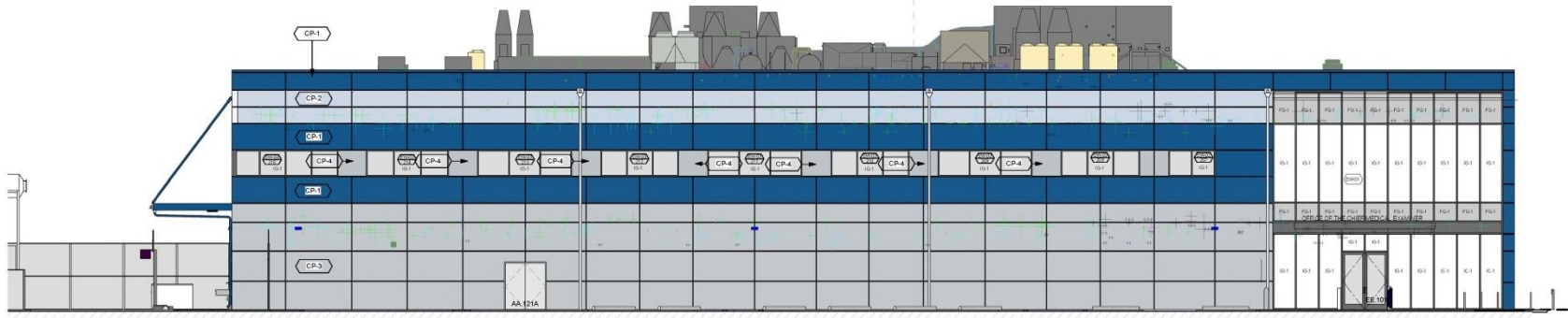
# OCME – Architectural Renderings:



# OCME – Architectural Renderings:

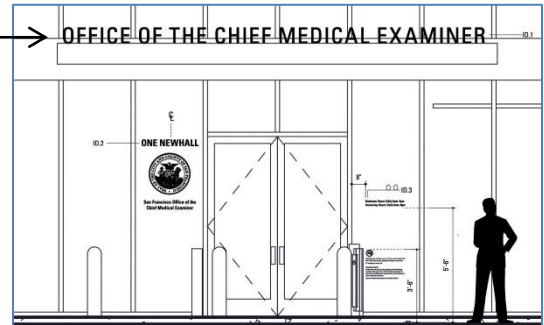


# OCME – Building Elevations:

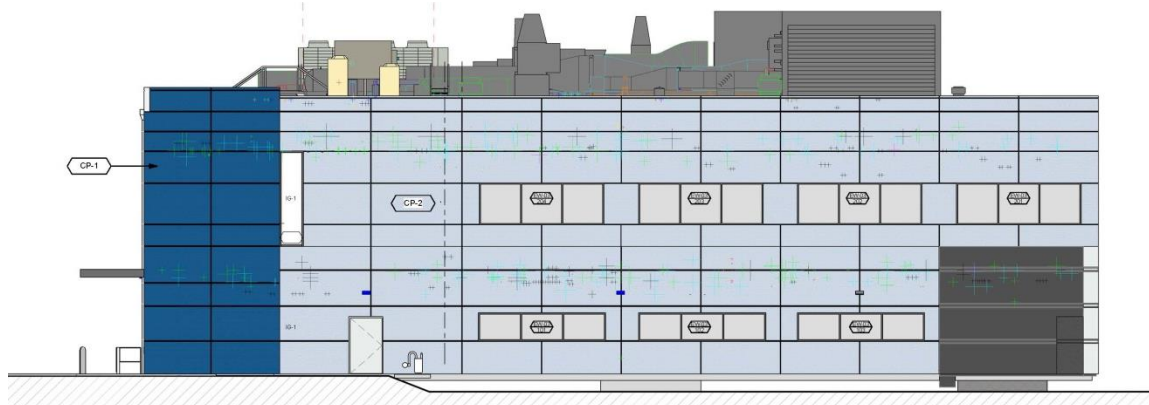


(Newhall Street) SOUTH ELEVATION

OCME canopy signage; Fabricated 9" high, 1.5" deep, unifers 57 condensed, stainless steel letters w/ a horizontal brushed finish; enclosed back, mechanically fastened to canopy.

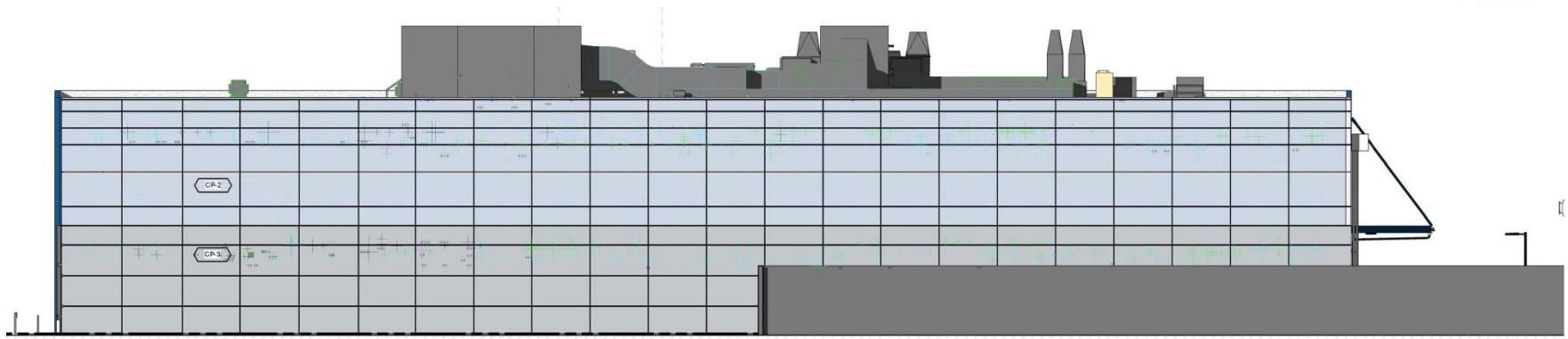


ENLARGED MAIN ENTRY ELEVATION

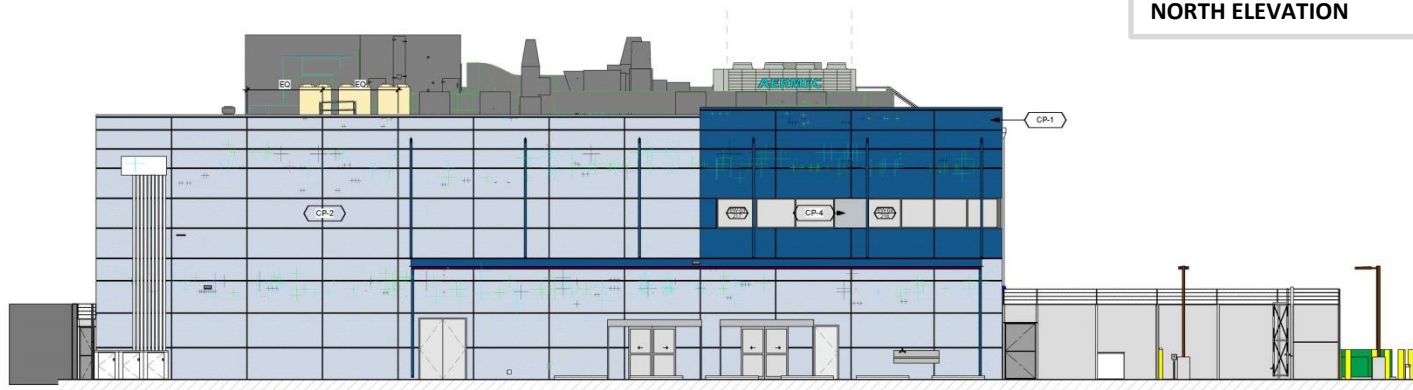


(Jennings Street) EAST ELEVATION

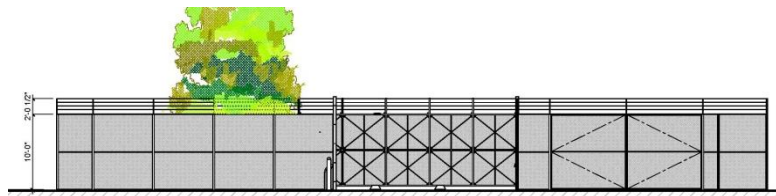
# OCME – Building Elevations:



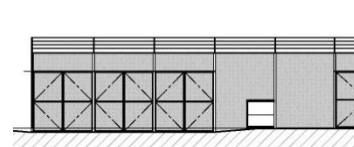
NORTH ELEVATION



WEST ELEVATION (with Canopy)

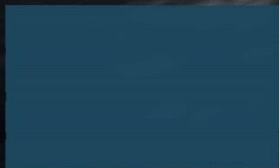
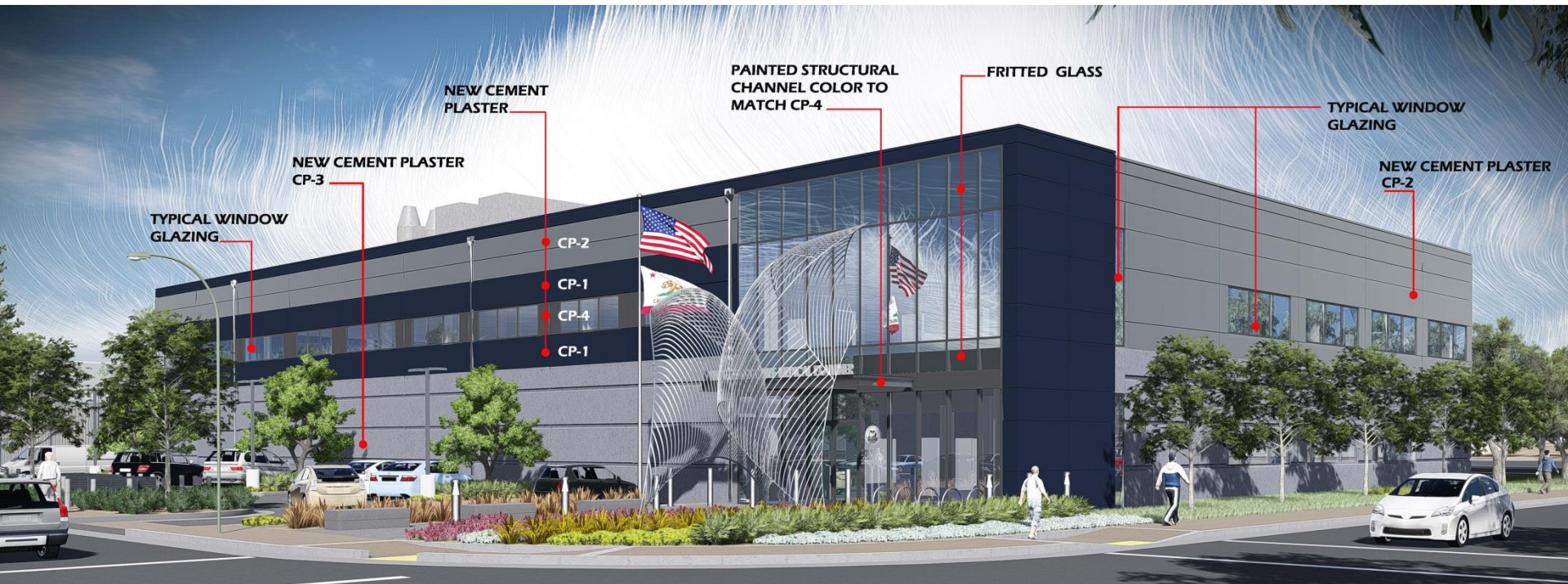


SITE SECURITY FENCE - SOUTH ELEVATION

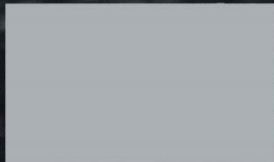


SITE SECURITY FENCE - EAST ELEVATION

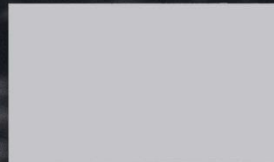
# OCME – Exterior Finish Materials:



CP-1  
CEMENT PLASTER



CP-2  
CEMENT PLASTER



CP-3  
CEMENT PLASTER



CP-4  
CEMENT PLASTER



FRITTED GLASS



TYPICAL WINDOW GLAZING

**OFFICE OF THE CHIEF  
MEDICAL EXAMINER BUILDING**  
1 NEWHALL STREET  
SAN FRANCISCO, CA



EXTERIOR FINISH  
MATERIALS  
JULY 20TH, 2015

**KMD**  
ARCHITECTS





# OCME – Questions/ Discussions:

