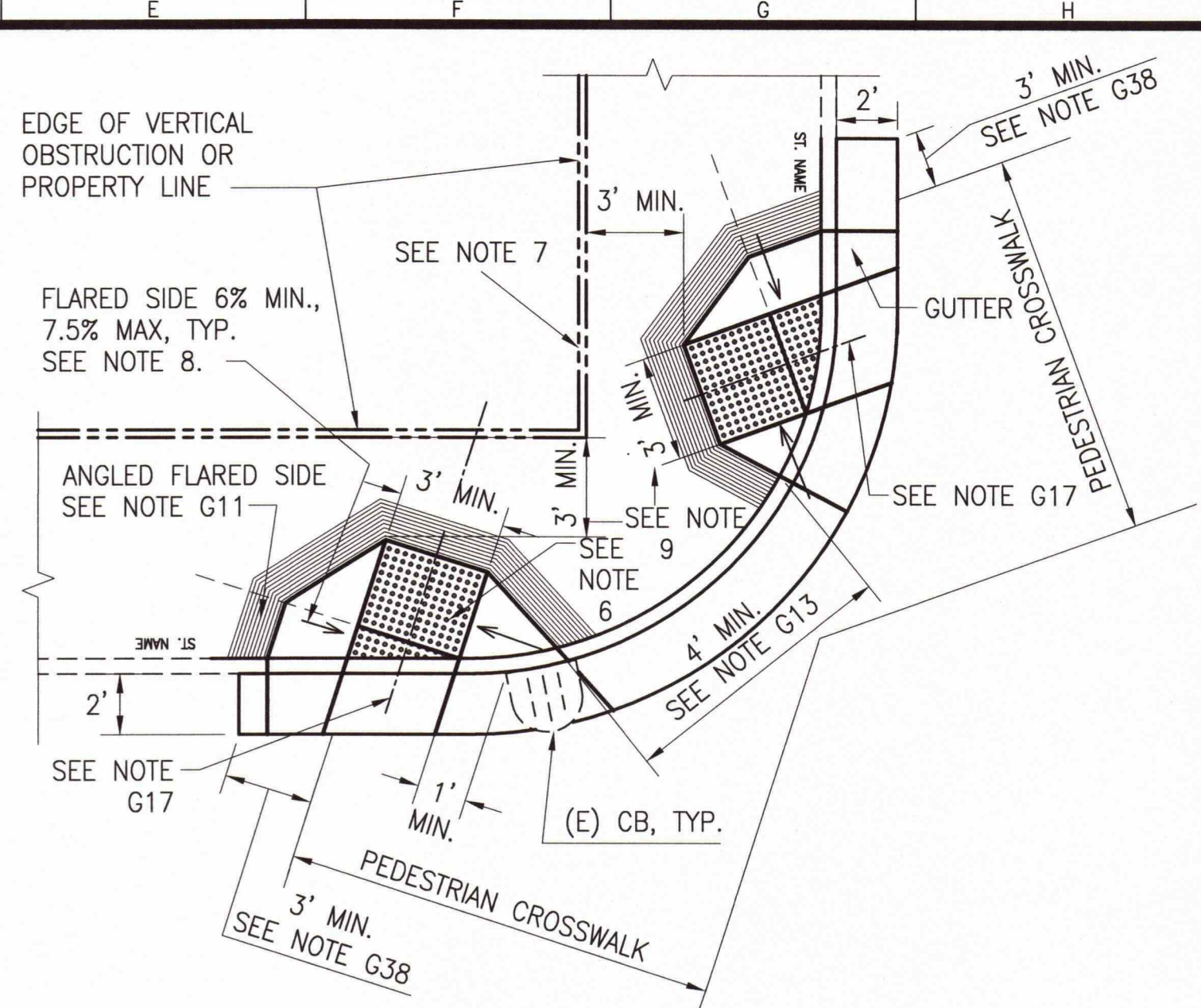
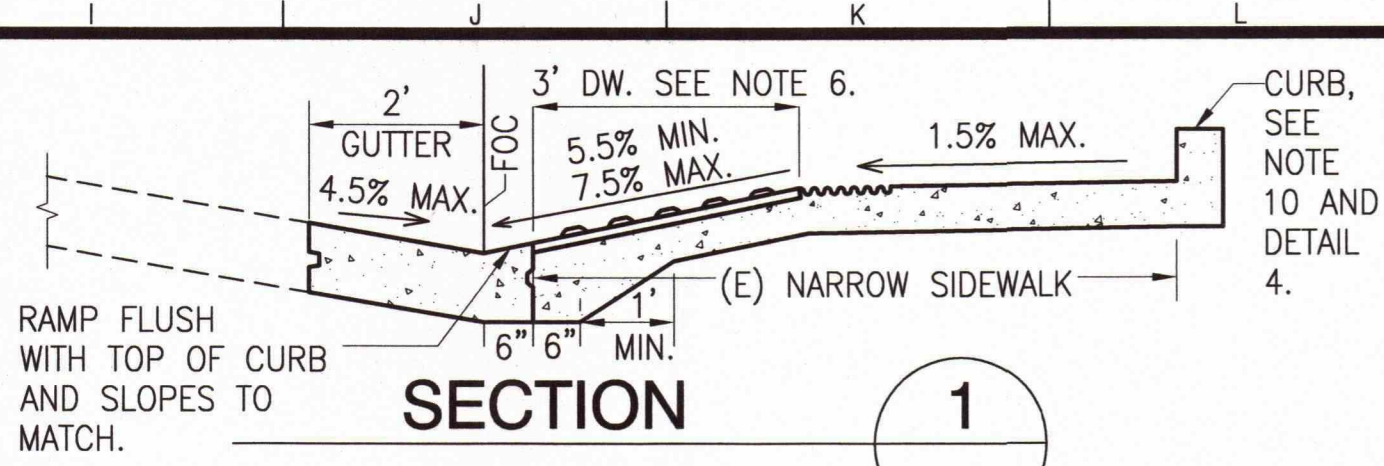


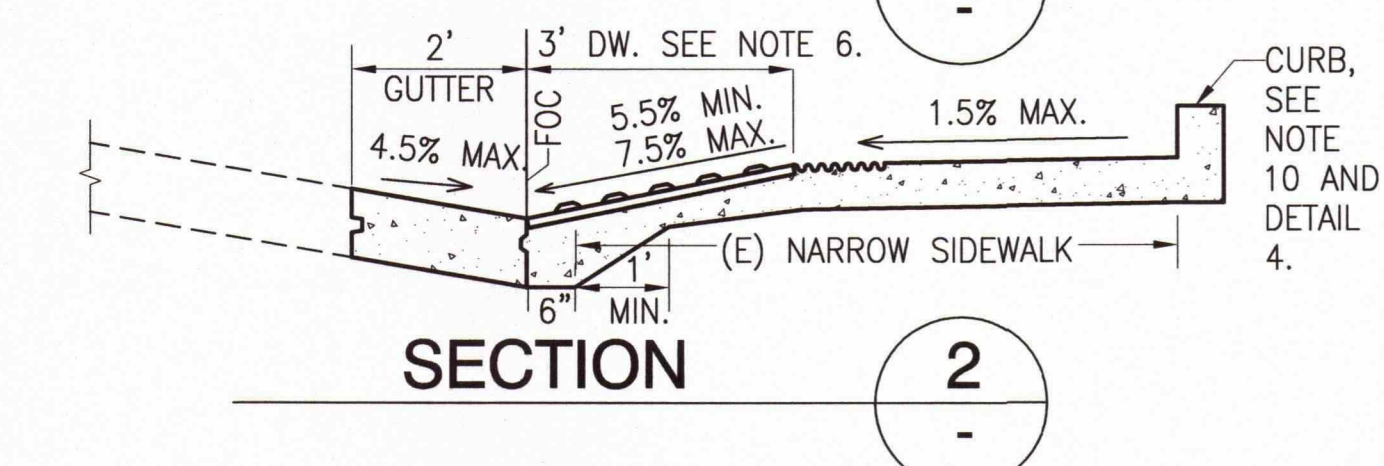
**ALTERNATE CURB RAMP PLAN A1**  
TYPICAL DIAGONAL LAYOUT



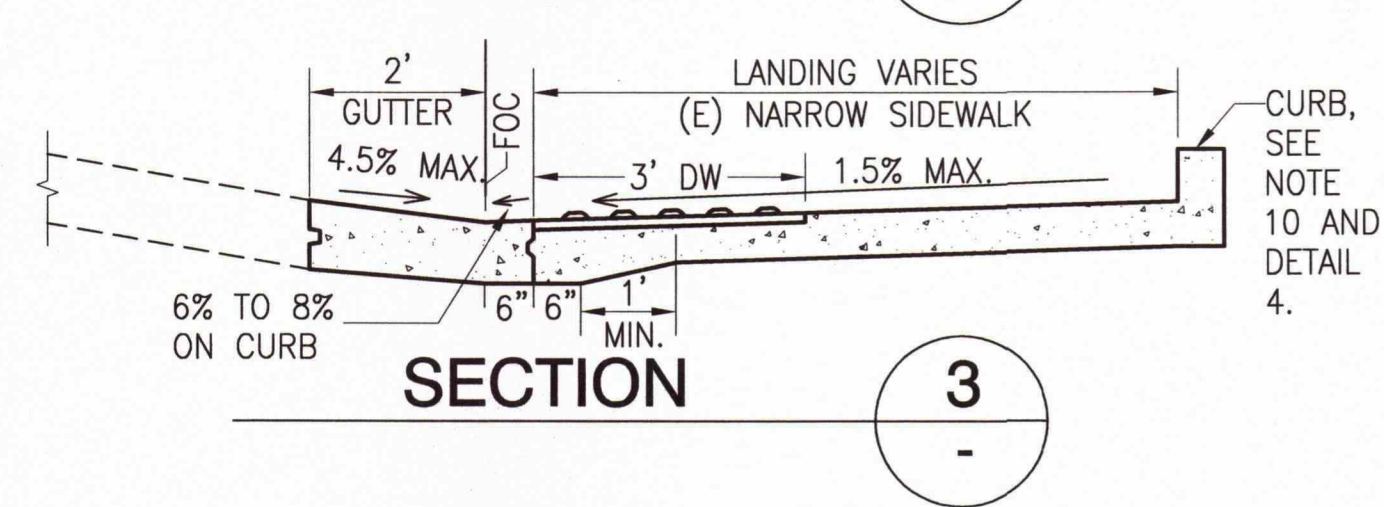
**ALTERNATE MINI-CURB RAMP PLAN A2**  
TYPICAL DIAGONAL LAYOUT



**SECTION 1**



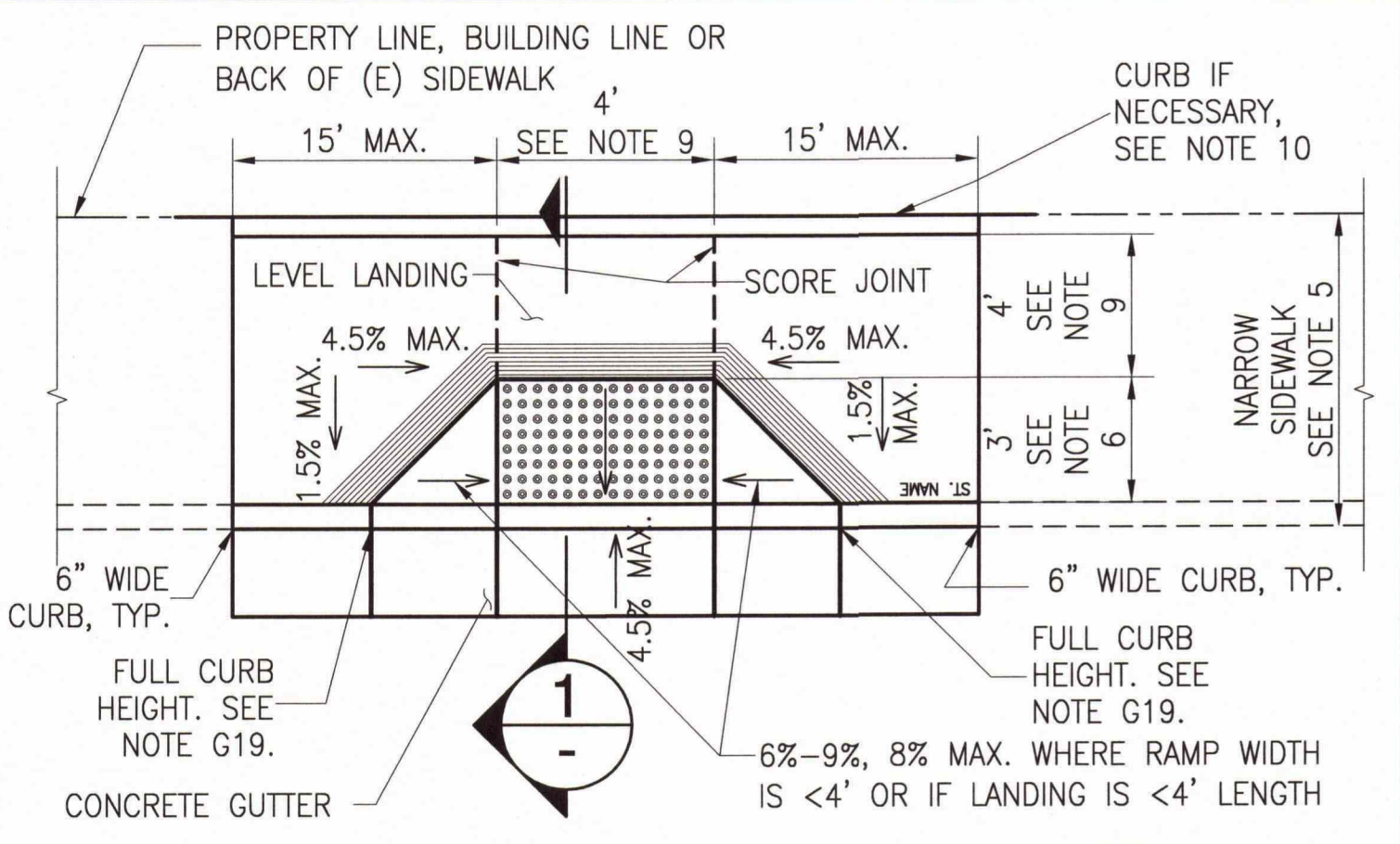
**SECTION 2**



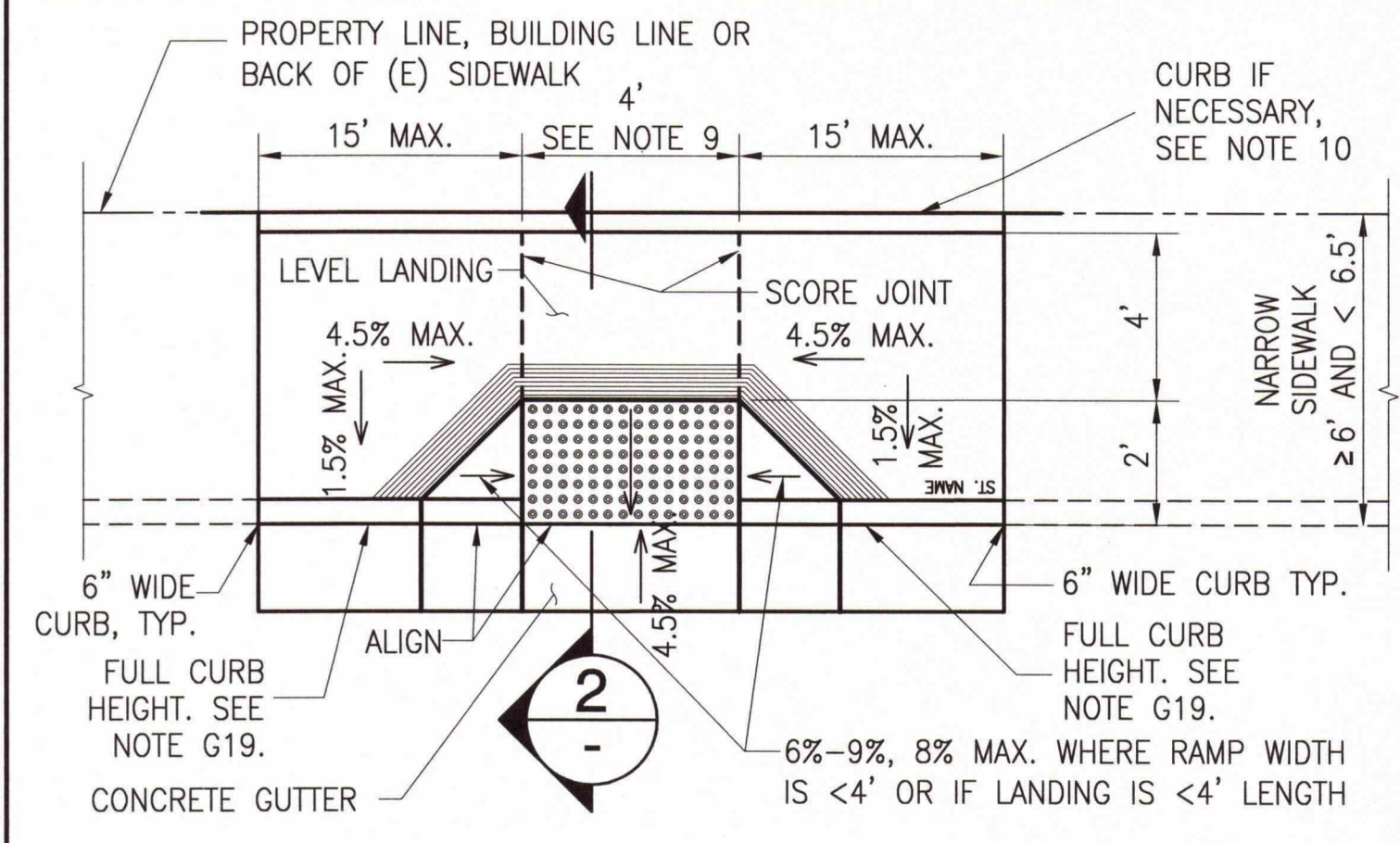
**SECTION 3**

**SHEET NOTES**

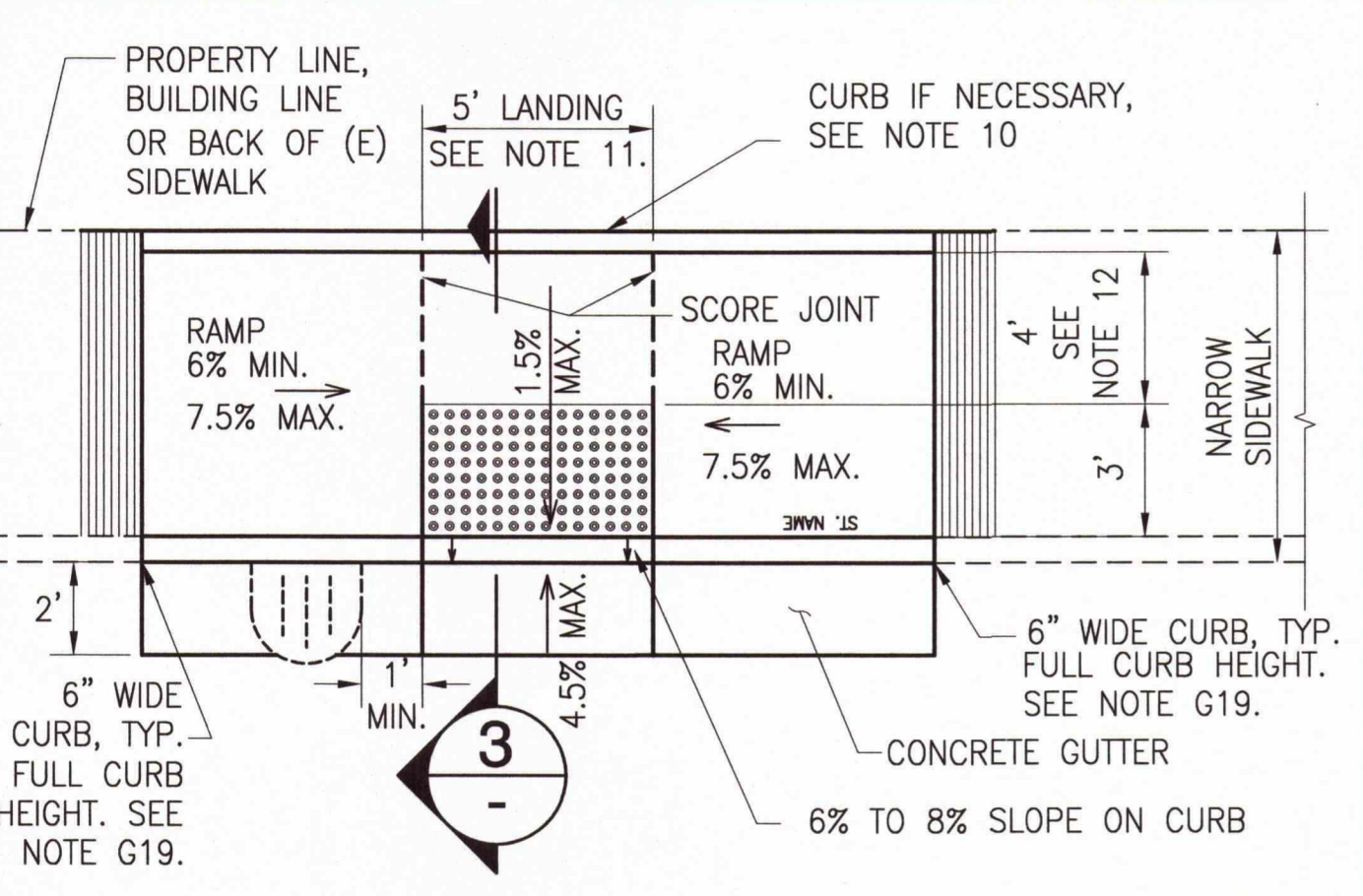
1. THE ALTERNATE CURB RAMPS SHOWN ON THIS DRAWING SHALL BE USED ONLY WITH PRIOR APPROVAL FROM THE CITY ENGINEER, PUBLIC WORKS DISABILITY ACCESS COORDINATOR, OR THEIR DESIGNEE AND UPON PROPER DOCUMENTATION OF HARDSHIP INDICATING LEGAL AND OR PHYSICAL CONSTRAINTS.
2. ALL GENERAL NOTES AND DETAILS ON DRAWING RX-2 THRU RX-5 SHALL APPLY TO THIS SHEET. FOR DETECTABLE WARNING DETAILS AND NOTES, SEE DRAWING RX-6.
3. THE CURB RAMP ALTERNATES SHALL BE USED IN DESCENDING ORDER OF PRIORITY, FROM ALTERNATE A1 TO A2 TO B1 TO B2 TO C. IT IS PREFERRED TO USE CURB RAMP DESIGNS THAT PLACE DW ON A SLOPE IN ORDER FOR RAIN TO WASH DEBRIS AWAY AND OFF OF RAMPS.
4. ALTERNATE B1 AND B2 CURB RAMPS SHALL BE USED AS A VARIATION OF A STANDARD CURB RAMP AT NARROW SIDEWALK LOCATIONS WHERE THERE IS ENOUGH ROOM FOR TOP LEVEL LANDING.
5. SIDEWALK WITH A WIDTH OF LESS THAN OR EQUAL TO 7.5' IS CONSIDERED A "NARROW SIDEWALK." WHEN SIDEWALK IS LESS THAN OR EQUAL TO 7.5' AND GREATER THAN OR EQUAL TO 6', ALTERNATE CURB RAMP B1 OR B2 IS PREFERRED. ALTERNATE CURB RAMP C IS USED WHERE ALTERNATE B1 OR B2 CANNOT BE CONSTRUCTED DUE TO TECHNICAL INFEASIBILITY.
6. LENGTH OF DW MAY BE REDUCED TO AS LITTLE AS 2 FEET IN ORDER TO PROVIDE THE MOST COMPLIANT UPPER LANDING LENGTH.
7. CONSTRUCT CURB TO RETAIN LANDSCAPING AS NEEDED WHERE PROPOSED SIDEWALK SURFACE IS LOWERED TO FIT CURB RAMPS.
8. WHEN RAMP WIDTH, TOP LANDING WIDTH, AND/OR LENGTH OF TOP LANDING IN DIRECTION OF RAMP IS LESS THAN 4 FEET, FLARED SIDE IS TO BE DESIGNED AT A MAXIMUM 7.5% SLOPE PERPENDICULAR TO THE RAMP. CONSTRUCTED MAXIMUM SLOPE FOR FLARED SIDE IS 8.33% UNDER THESE SAME CONSTRAINTS.
9. 4' RAMP WIDTH AND 4' UPPER LANDING LENGTH ARE REQUIRED MINIMUM DIMENSIONS. THESE DIMENSIONS MAY BE REDUCED TO AS LITTLE AS 3' WHERE IT IS TECHNICALLY INFEASIBLE TO DO OTHERWISE.
10. A 4" MIN. WIDE CURB SHALL BE INSTALLED ALONG THE EDGE OF THE BACK OF SIDEWALK ONLY WHEN NEEDED.
11. FOR ALTERNATE CURB RAMP "C", 5' LANDING WIDTH IS REQUIRED MINIMUM DIMENSION. THIS DIMENSION MAY BE REDUCED TO AS LITTLE AS 4' WHERE IT IS TECHNICALLY INFEASIBLE TO DO OTHERWISE.
12. 4' MIN. LENGTH TYPICAL WHERE TECHNICALLY FEASIBLE, FREE OF DOMES FOR CONTINUOUS PATH OF TRAVEL.
13. 4.5% MAX. SLOPE IS TYPICAL, WITH AN EXCEPTION POSSIBLE OF UP TO 7.5% WHERE NECESSARY.



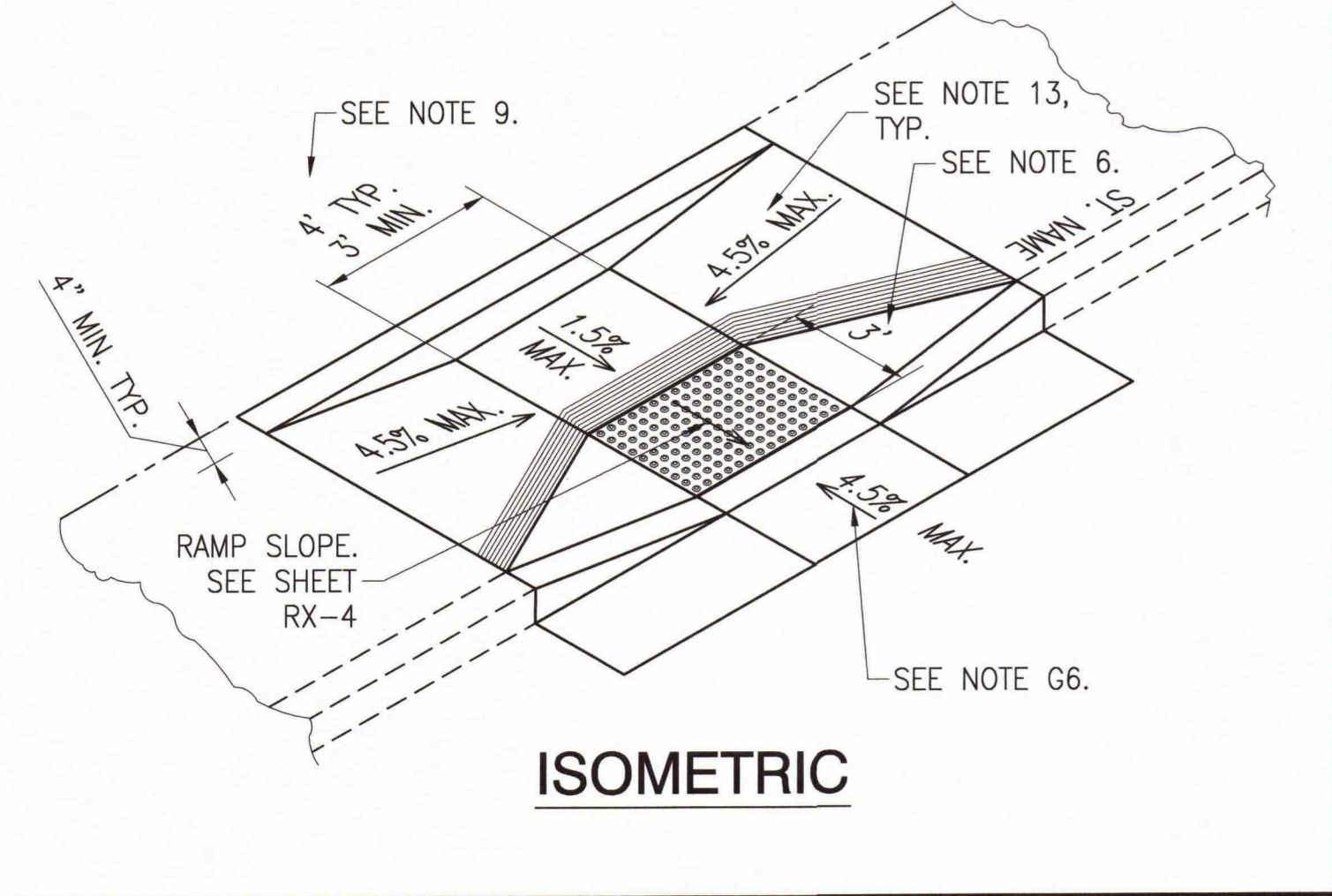
**ALTERNATE CURB RAMP B1**  
MINI RAMP



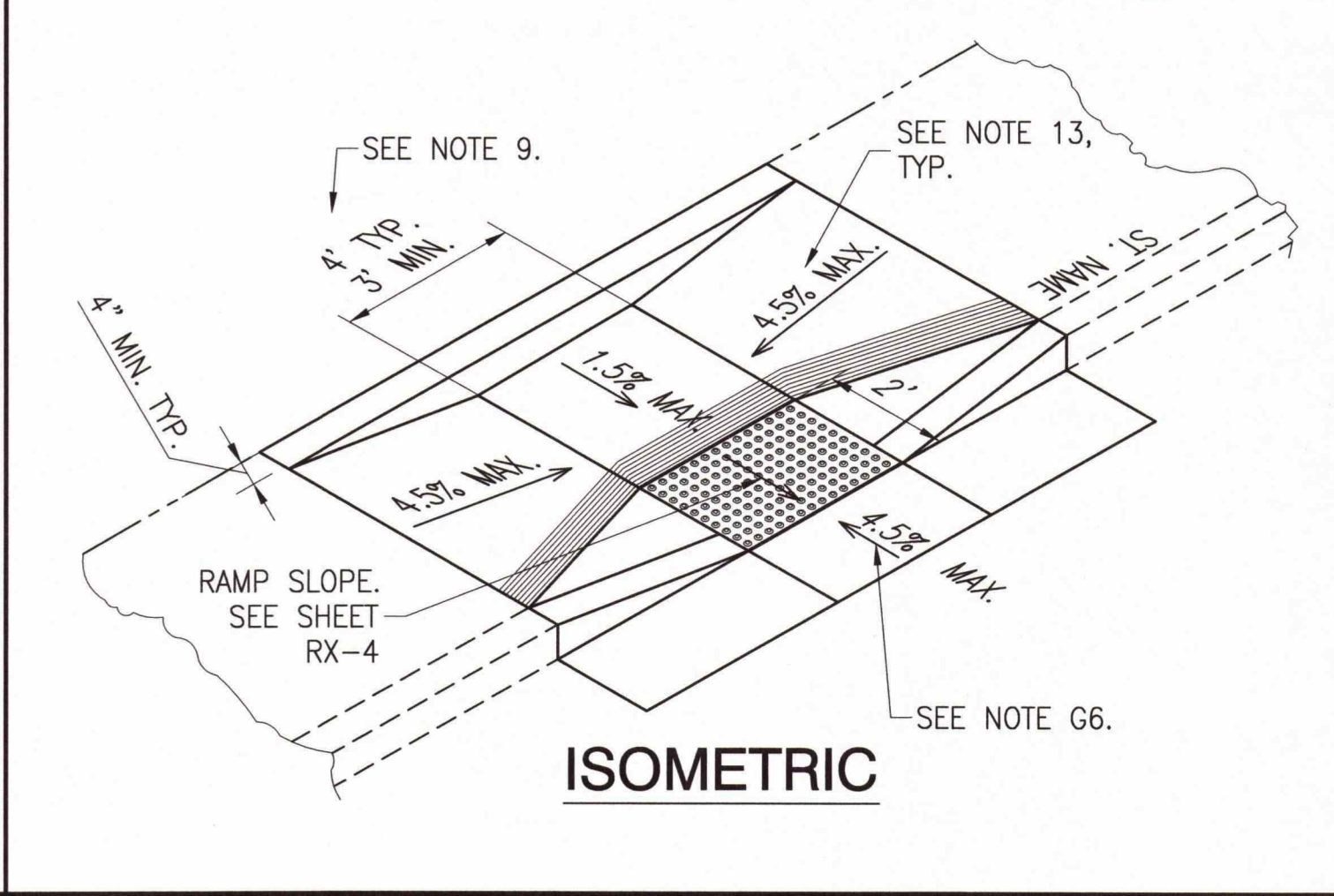
**ALTERNATE CURB RAMP B2**  
MINI RAMP



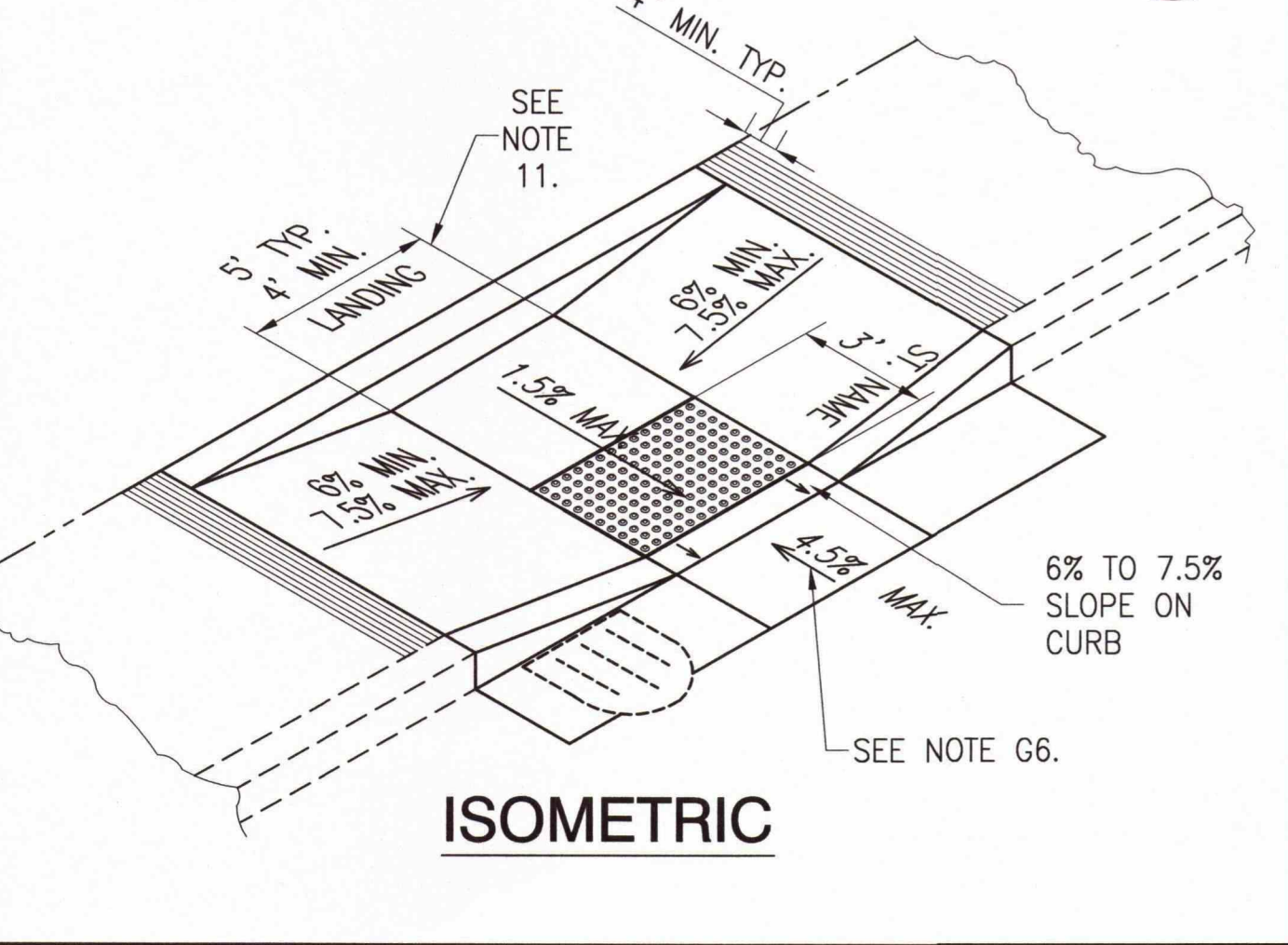
**ALTERNATE CURB RAMP C**  
PARALLEL RAMP



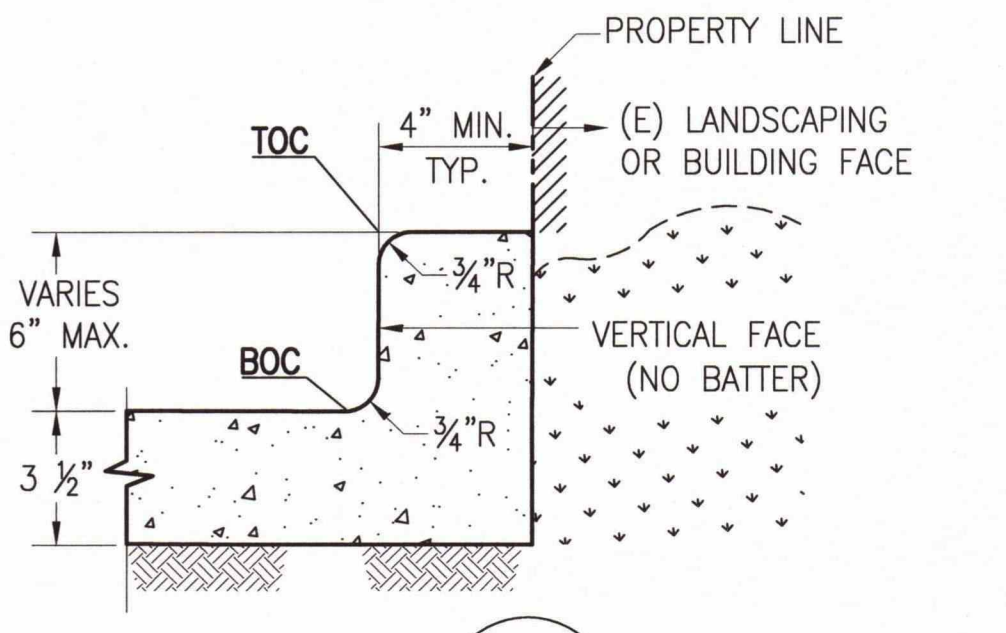
**ISOMETRIC**



**ISOMETRIC**



**ISOMETRIC**

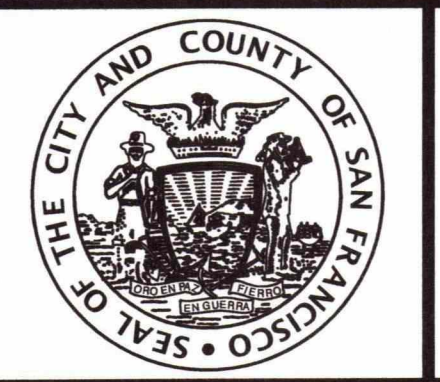


**DETAIL 4**

APPROVED: *[Signature]* 1/27/17  
PUBLIC WORKS DISABILITY ACCESS COORDINATOR DATE:  
EFFECTIVE DATE: 4/3/2017

NO.	DATE	DESCRIPTION	BY	APP.
TABLE OF REVISIONS				

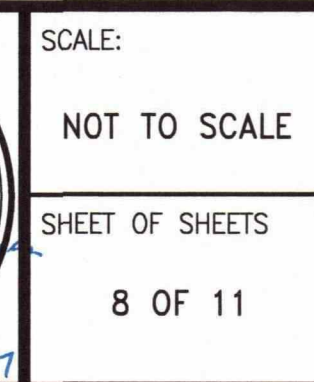
REFERENCE INFORMATION & FILE NO. OF SURVEYS



**DESIGN & ENGINEERING**  
PUBLIC WORKS  
CITY & COUNTY OF SAN FRANCISCO  
30 VAN NESS AVENUE, 5TH FLOOR  
SAN FRANCISCO, CA 94102 - 6028

Acting Section Mgr: DEANNA CALLEROS  
Acting City Engineer: JOHN THOMAS  
Date: 1/27/17

DESIGNED: DATE: 01/17  
DRAWN: DATE: 01/17  
CHECKED: DATE: 01/17



SCALE: NOT TO SCALE  
SHEET OF SHEETS: 8 OF 11  
**ACCESSIBLE STREET CROSSING STANDARD**  
**ALTERNATE CURB RAMPS WITH CONSTRAINED SIDEWALK WIDTHS**

CONTRACT NO. NONE  
DRAWING NO. RX-8  
FILE NO. 102,861  
REV. NO.