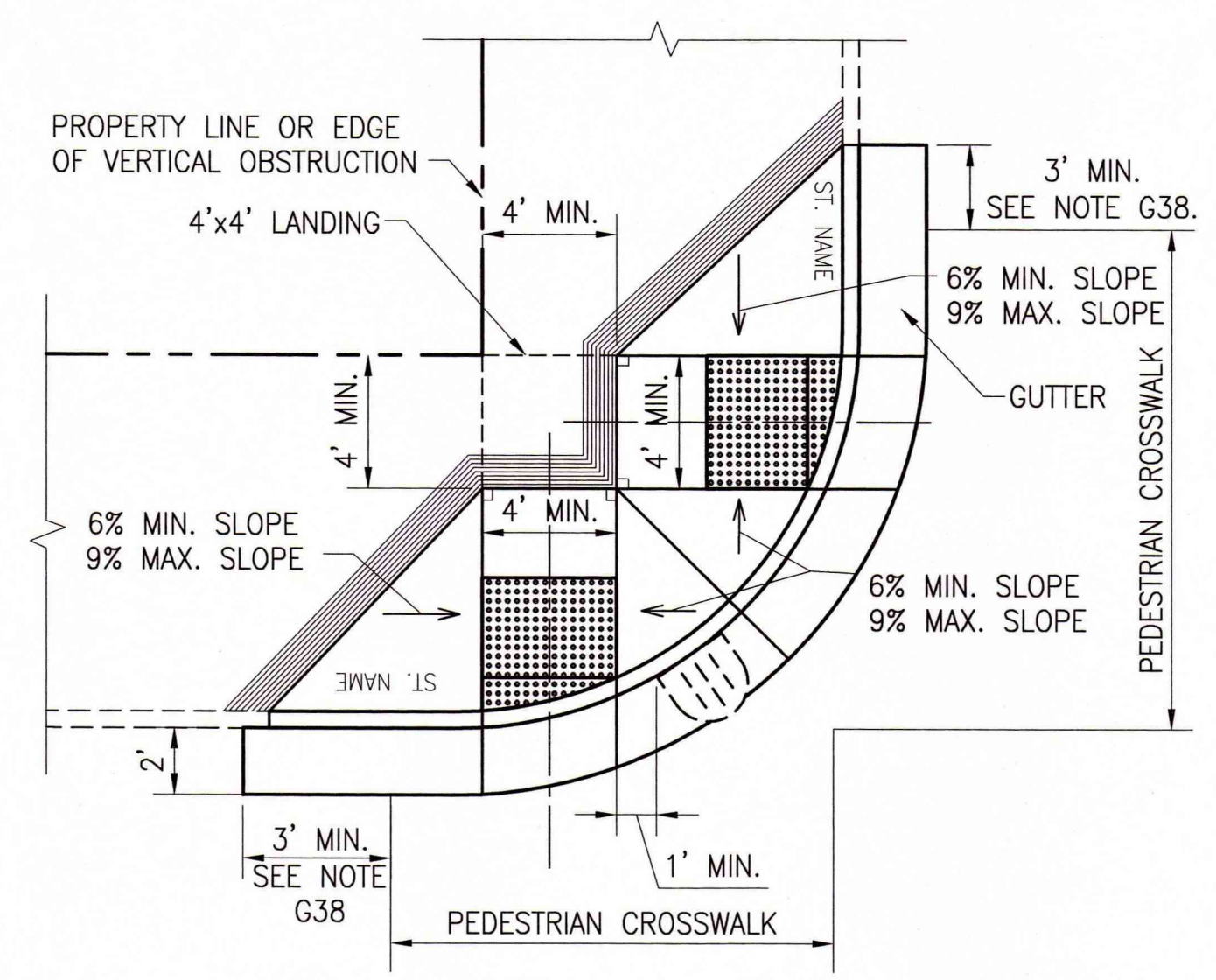
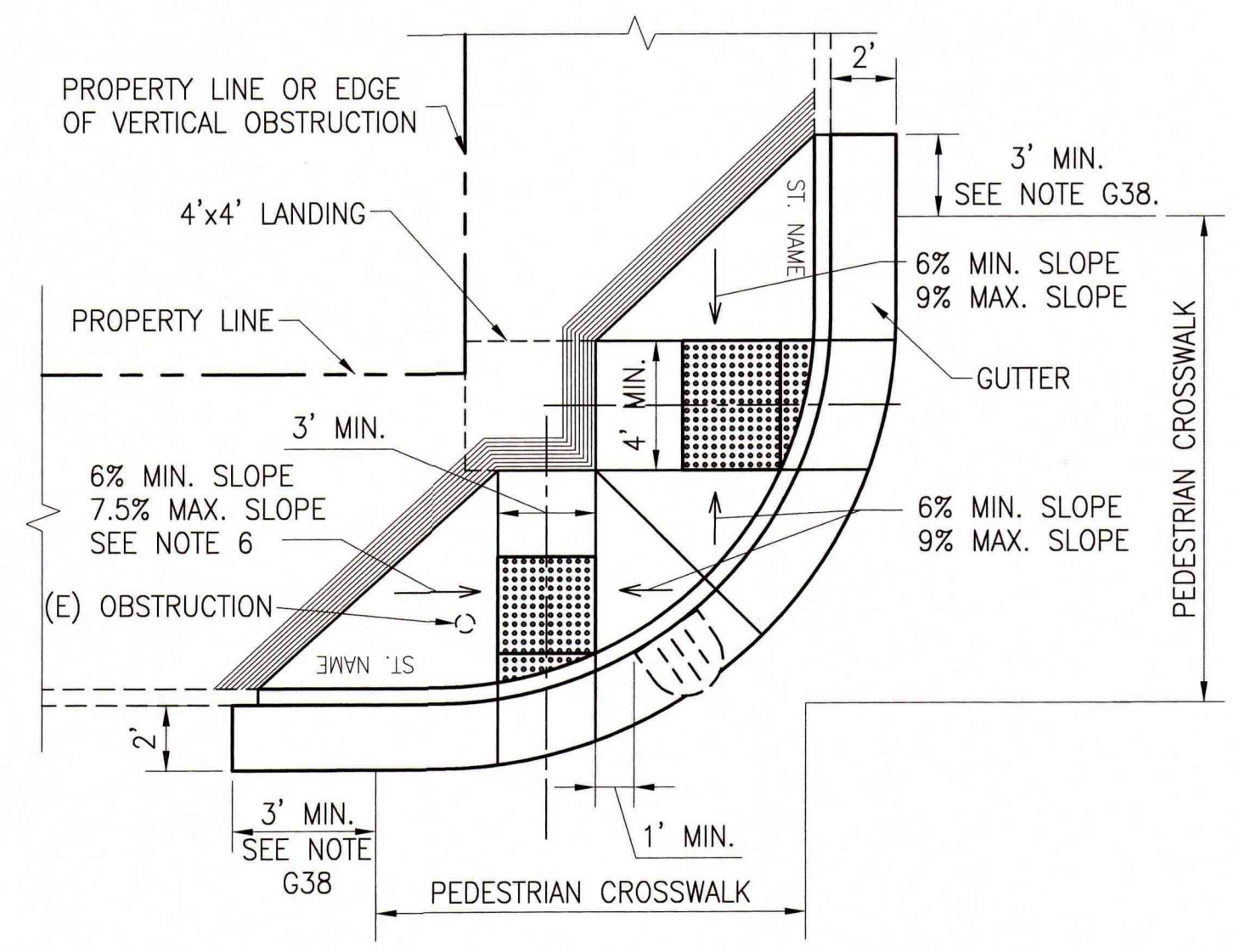


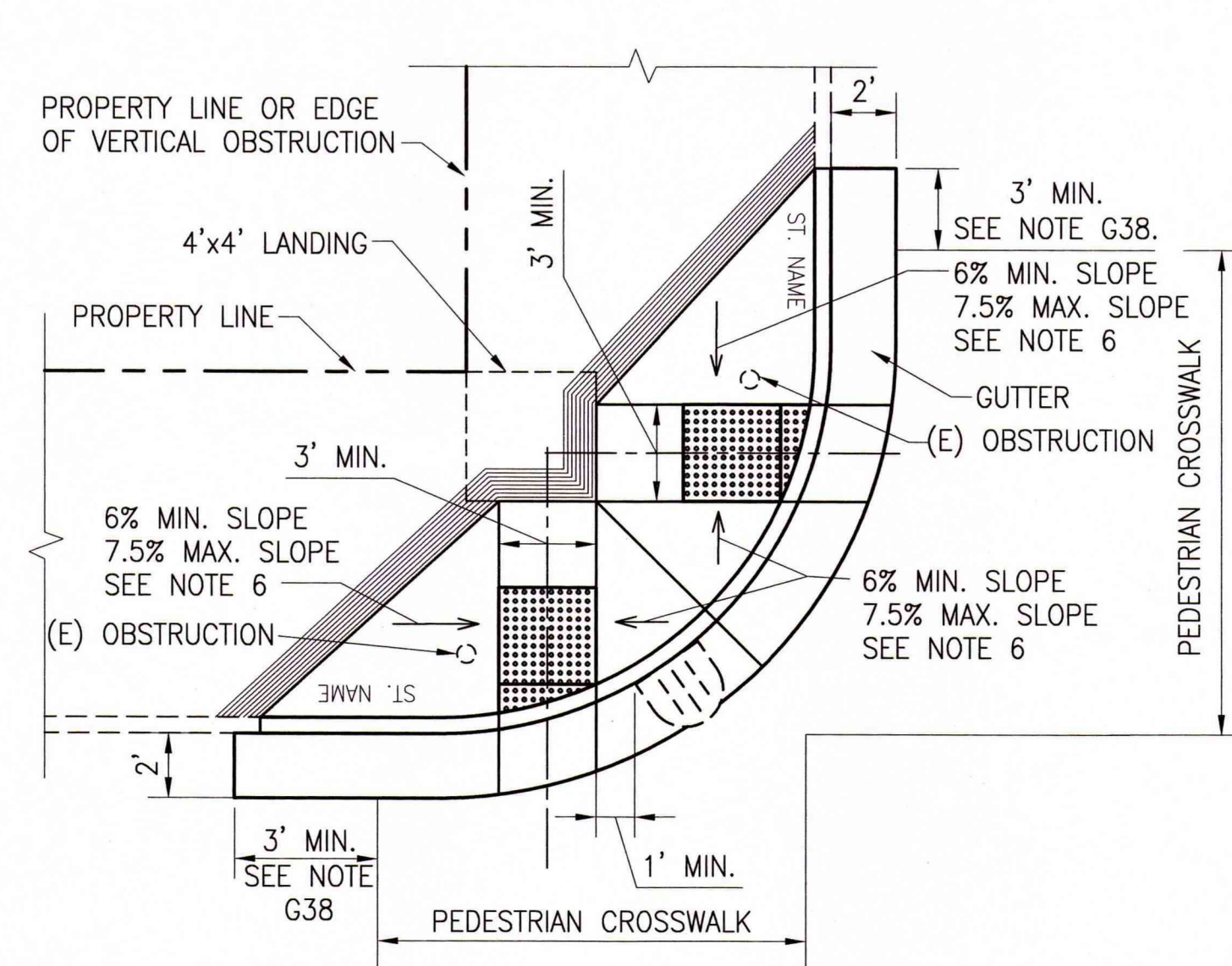
CURB RAMP ALTERNATE A
MERGED GROOVED BORDER



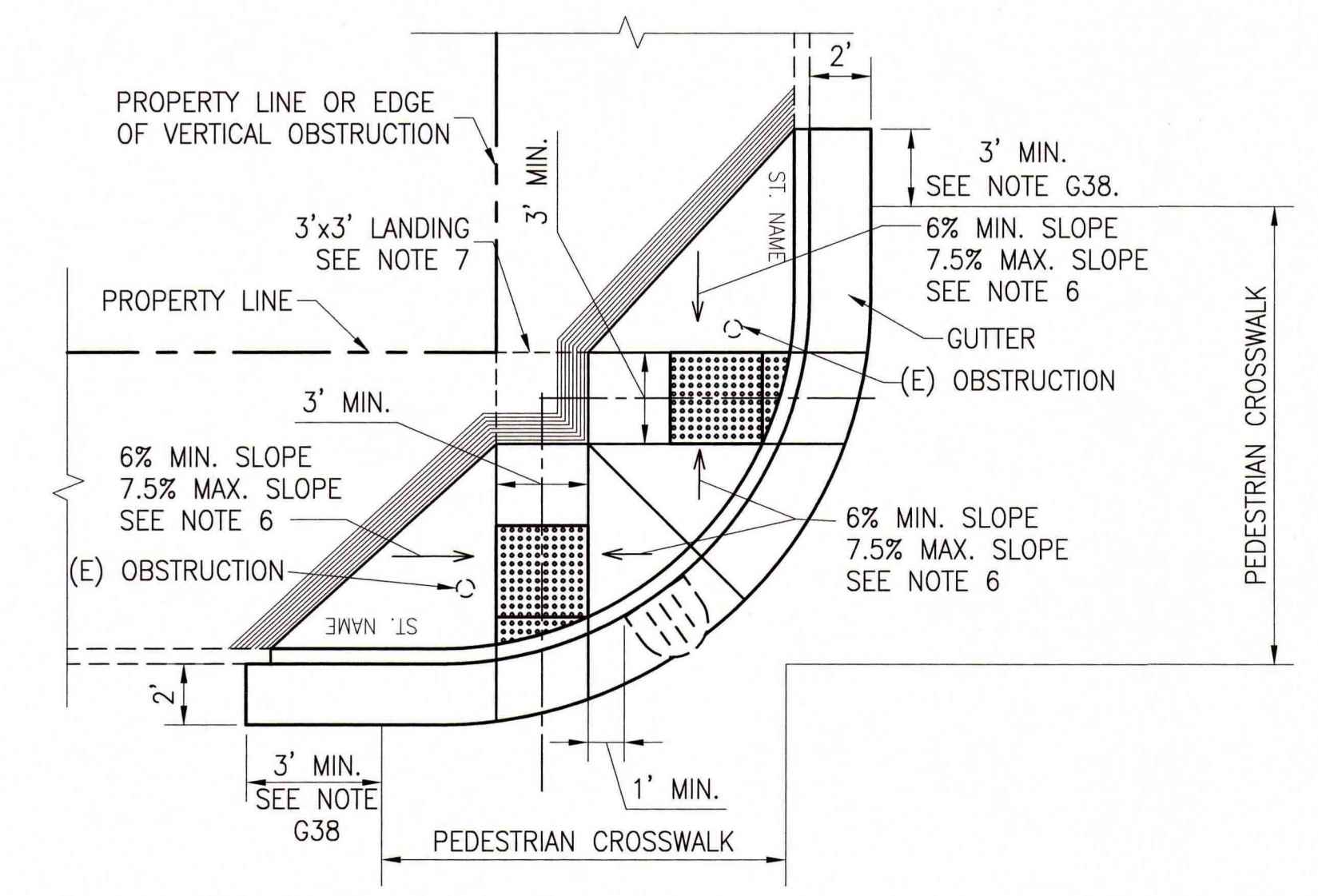
CURB RAMP ALTERNATE B
MERGED FLARED SIDES



CURB RAMP ALTERNATE C
3' AND 4' RAMPS



CURB RAMP ALTERNATE D
3' RAMPS



CURB RAMP ALTERNATE E
3' TOP LANDING - 3' RAMPS

SHEET NOTES

1. THE ALTERNATE CURB RAMPS SHOWN ON THIS DRAWING SHALL BE USED ONLY WITH PRIOR APPROVAL FROM THE CITY ENGINEER, PUBLIC WORKS DISABILITY ACCESS COORDINATOR, OR THEIR DESIGNEE AND UPON PROPER DOCUMENTATION OF HARDSHIP INDICATING LEGAL AND/OR PHYSICAL CONSTRAINTS.
2. ALL GENERAL NOTES AND DETAILS ON DRAWING RX-2 THRU RX-5 SHALL APPLY TO THIS SHEET. FOR DETECTABLE WARNING DETAILS AND NOTES, SEE DRAWING RX-6.
3. THE CURB RAMP ALTERNATES SHALL BE USED IN DESCENDING ORDER OF PRIORITY, FROM ALTERNATE "A" TO "B" TO "C" TO "D" THEN TO "E".
4. WHEN THE 4-FOOT MINIMUM DISTANCE BETWEEN THE FLARED SIDES OF TWO ADJACENT CURB RAMPS CANNOT BE ACHIEVED DUE TO HARDSHIP, DISTANCE BETWEEN MAY BE REDUCED. IT IS PREFERRED THAT LARGER THAN 1' DISTANCE BETWEEN BE PROVIDED, AS MUCH AS TECHNICALLY FEASIBLE. THE DISTANCE BETWEEN THE TWO FLARED SIDES CAN BE REDUCED TO A 1' GROOVED BORDER AS SHOWN IN ALTERNATE "A".
5. ALTERNATE "B" SHALL BE USED WHEN THE SPACE WITHIN THE CURB RETURN IS LIMITED AND OMITTING THE MERGED GROOVED BORDER WILL ALLOW THE INSTALLATION OF TWO ADJACENT CURB RAMPS.
6. WHEN THE RAMP WIDTH IS LESS THAN 4' OR THE TOP LANDING WIDTH IS LESS THAN 4', THEN THE SLOPE OF THE FLARED SIDES SHALL BE 7.5% MAXIMUM, 6% MINIMUM.
7. WHERE THE CURB RAMP TOP LANDING CLEARANCE MUST BE < 4' AT LOCATIONS WHERE IT IS DOCUMENTED TO BE TECHNICALLY INFEASIBLE TO PROVIDE 4' MINIMUM LENGTH AND WIDTH, THE LANDING MAY BE REDUCED, BUT SHALL NOT BE < 3'. EXTREME TECHNICALLY INFEASIBLE LOCATIONS THAT CANNOT BE PROVIDED WITH 3' LANDING MUST BE APPROVED AND DOCUMENTED ON A CASE BY CASE BASIS BY THE CITY ENGINEER, PUBLIC WORKS DISABILITY ACCESS COORDINATOR, OR THEIR DESIGNEE.

APPROVED: *Karl Thomas* 4/27/17
PUBLIC WORKS DISABILITY ACCESS COORDINATOR DATE:
EFFECTIVE DATE: 4/13/2017

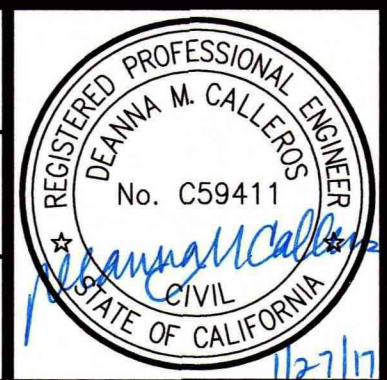
NO.	DATE	DESCRIPTION	BY	APP.
TABLE OF REVISIONS				

REFERENCE INFORMATION & FILE NO. OF SURVEYS



DESIGN & ENGINEERING
PUBLIC WORKS
CITY & COUNTY OF SAN FRANCISCO
30 VAN NESS AVENUE, 5TH FLOOR
SAN FRANCISCO, CA 94102 - 6028

Date: 1/27/17
Acting Section Mgr: DEANNA CALLEROS
Division Mgr: PATRICK RIVERA
Acting City Engineer: JOHN THOMAS



SCALE: NOT TO SCALE
SHEET OF SHEETS: 7 OF 11

ACCESSIBLE STREET CROSSING STANDARD
ALTERNATE CURB RAMPS
MERGED GROOVED BORDER CURB RAMP PLANS

CONTRACT NO. NONE
DRAWING NO. RX-7
FILE NO. 102,860
REV. NO.