

## FOG BELT ZONE PLANT PALATTES

PLANTS SUITED IN COASTAL AREAS (SUPERVISOR DISTRICTS 1,2,4, AND 7)  
(PLANTS SELECTED ARE A MIX OF CALIFORNIA NATIVES AND MEDITERRANEAN PLANTS)

### SUNNY CONDITONS (South Facing)

#### OPTION 1

SYMBOL	NAME	SIZE	APPROX. SPACING	QUANTITY FOR 4X6	QUANTITY FOR 3X4
A1	HELIANTHEMUM 'APRICOT'	1 GAL	2' O.C.	4	2
B1	ESCHSCHOLZIA CALIFORNICA CALIFORNIA POPPY	1 GAL	12" O.C.	4	2
B2	LAVANDULA x INTERMEDIA 'GROSSO' LAVENDER	1 GAL	3' O.C.	2	1
C1	ACHILLEA FILIPENDULINA FERNLEAF YARROW	1 GAL	2'-6" O.C.	2	2
C2	PENSTEMON HETEROPHYLLUS PENSTEMON (PURPLE OR WHITE)	1 GAL	18" O.C.	2	2
C3	PHORMIUM 'RUBRUM' NEW ZEALAND FLAX	5 GAL	3' O.C.	1	0

#### OPTION 2

SYMBOL	NAME	SIZE	APPROX. SPACING	QUANTITY FOR 4X6	QUANTITY FOR 3X4
A1	ERIGERON GLAUCUS BEACH ASTER	1 GAL	18" O.C.	8	8
A2	GRAPTOVERIA 'DEBBI'	4" POT	8" O.C.	10	0
B1	AEONIUM ARBOREUM VARIETIES	1 GAL	2' O.C.	4	4
B2	ANIGOZANTHOS HYBRIDS KANGAROO PAW	1 GAL	2' O.C.	2	1
B3	PHORMIUM 'JACK PRATT'	1 GAL	18" O.C.	4	2
C3	AGAVE ATTENUATA 'NOVA'	5 GAL	5'-0" O.C.	1	0

### SHADE CONDITONS (North Facing)

#### OPTION 1

SYMBOL	NAME	SIZE	APPROX. SPACING	QUANTITY FOR 4X6	QUANTITY FOR 3X4
A1	RUBUS PENTELOBUS BRAMBLE	1 GAL	12" O.C.	12	8
B1	PHORMIUM 'TINY TIGER'	1 GAL	12" O.C.	8	6
B2	HELLEBORUS ORIENTALIS LENTEN ROSE	1 GAL	18" O.C.	2	0
C1	DIETES BICOLOR FORTNIGHT LILY	1 GAL	3' O.C.	0	1
C3	CORREA 'DUSKY BELLS' AUSTRALIAN FUSCHIA	5 GAL	5' O.C.	1	0

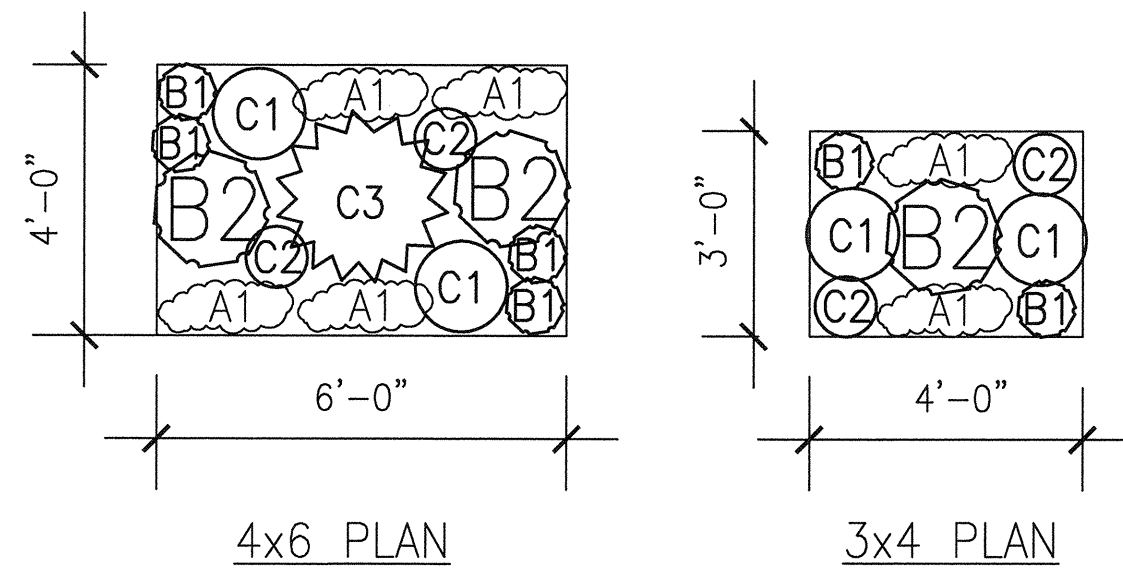
#### OPTION 2

SYMBOL	NAME	SIZE	APPROX. SPACING	QUANTITY FOR 4X6	QUANTITY FOR 3X4
A1	FRAGARIA CHILOENSIS BEACH STRAWBERRY	1 GAL	12" O.C.	12	8
B1	PHORMIUM 'JACK PRATT'	1 GAL	18" O.C.	8	4
B2	HELLEBORUS FOETIDUS BEAR'S FOOT HELLEBORE	1 GAL	24" O.C.	2	0
C3	RHAMNUS CALIFORNICA 'SEAVIEW'	5 GAL	3' O.C.	1	1

## FOG BELT ZONE PLANTING PLANS

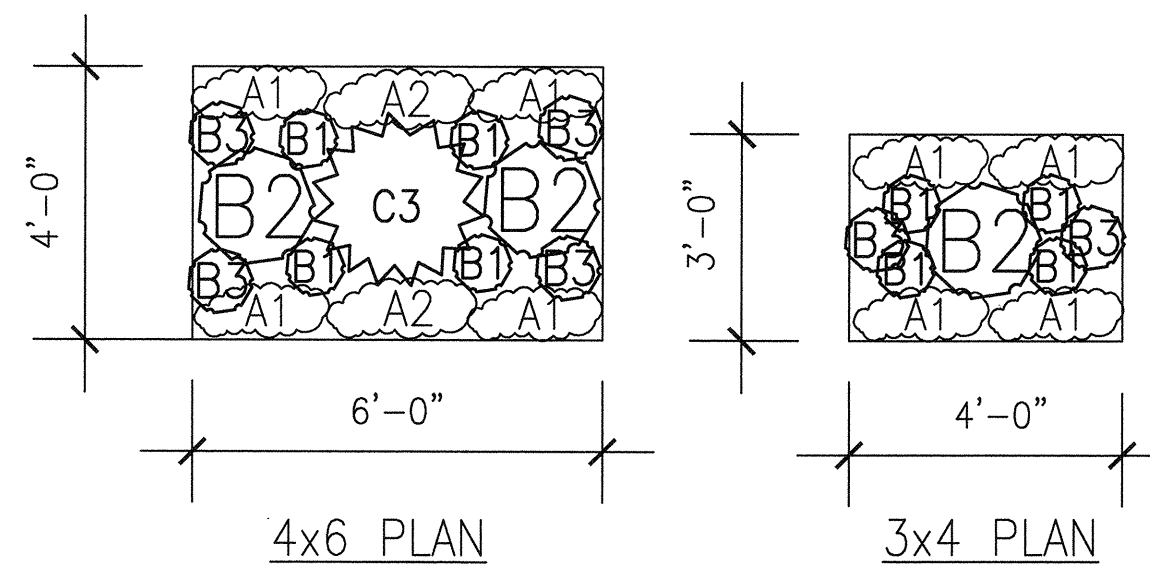
### SUNNY CONDITONS (South Facing)

#### OPTION 1 FOR 4X6 and 3x4 PLANTING MODULE



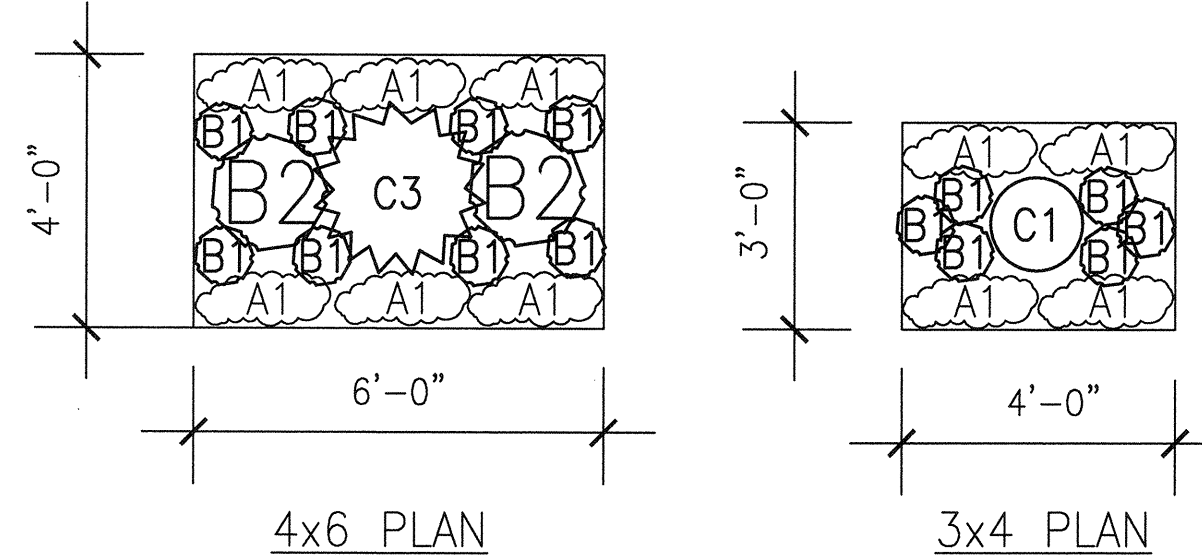
### SUNNY CONDITONS (South Facing)

#### OPTION 2 FOR 4X6 and 3x4 PLANTING MODULE



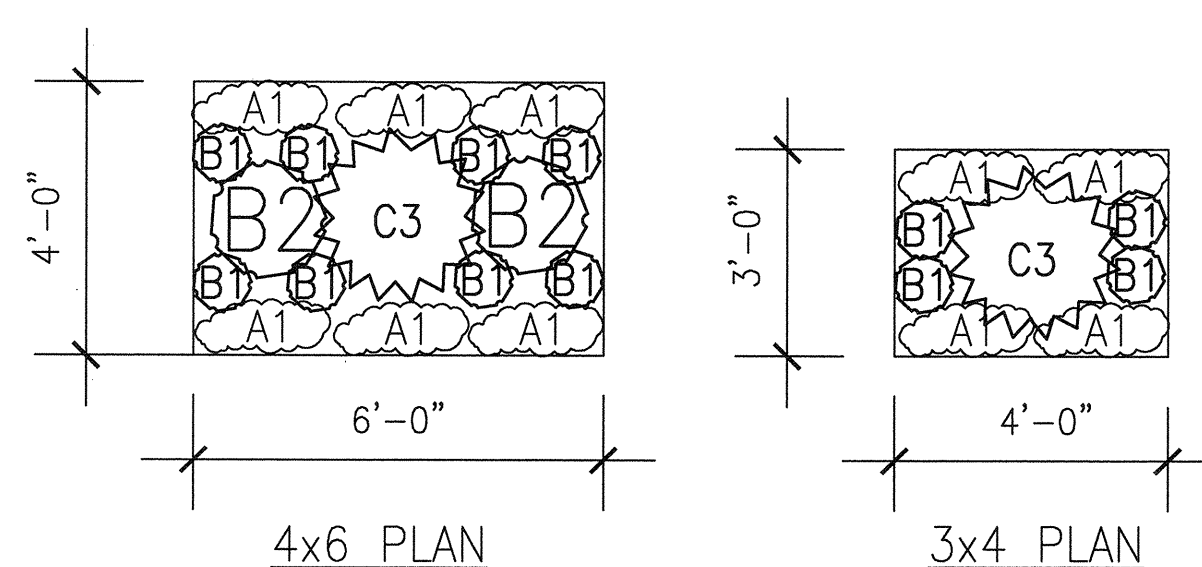
### SHADE CONDITONS (North Facing)

#### OPTION 1 FOR 4X6 and 3x4 PLANTING MODULE



### SHADE CONDITONS (North Facing)

#### OPTION 2 FOR 4X6 and 3x4 PLANTING MODULE



## TRANSITION & SUNBELT ZONE PLANT PALATTES

PLANTS SUITED FOR SAN FRANCISCO INLAND AND BAYSIDE AREAS  
(SUPERVISOR DISTRICTS 3,5,6,8-11 AND INLAND AREAS OF DIST 7)  
(PLANTS SELECTED ARE CALIFORNIA NATIVES THAT ATTRACT BEES AND BUTTERFLIES)

### SUNNY CONDITONS (South Facing)

#### OPTION 1

SYMBOL	NAME	SIZE	APPROX. SPACING	QUANTITY FOR 4X6	QUANTITY FOR 3X4
A1	LUPINUS VARICOLOR MANY COLORED LUPINE	1 GAL	2'-0" O.C.	4	2
B1	ESCHSCHOLZIA CALIFORNICA CALIFORNIA POPPY	1 GAL	12" O.C.	6	6
B2	MONARDELLA VILLOSA COYOTE MINT	1 GAL	2' O.C.	2	0
C1	ACHILLEA MILLEFOLIUM COMMON YARROW	1 GAL	18" O.C.	2	2
C2	PENSTEMON HETEROPHYLLUS PENSTEMON (PURPLE OR WHITE)	1 GAL	18" O.C.	2	2
C3	SALVIA GREGII AUTUMN SAGE	5 GAL	3' O.C.	1	0

#### OPTION 2

SYMBOL	NAME	SIZE	APPROX. SPACING	QUANTITY FOR 4X6	QUANTITY FOR 3X4
A1	SALVIA SONOMENSIS CREEPING SAGE	1 GAL	2'-6" O.C.	6	4
B1	PHORMIUM 'JACKS SPATT'	1 GAL	12" O.C.	6	4
C2	PENSTEMON HETEROPHYLLUS PENSTEMON (PURPLE OR WHITE)	1 GAL	18" O.C.	4	0
C3	MYRTUS COMMUNIS 'COMPACTA' DWARF MYRTLE	5 GAL	4' O.C.	1	1

### SHADE CONDITONS (North Facing)

#### OPTION 1

SYMBOL	NAME	SIZE	APPROX. SPACING	QUANTITY FOR 4X6	QUANTITY FOR 3X4
A1	ASTER CHILENSIS CALIFORNIA ASTER	1 GAL	12" O.C.	10	6
B1	ASCOLEPIAS FASCICULARIS NARROWLEAF WEED	1 GAL	18" O.C.	6	4
C3	CALAMAGROSTIS NUTKAENSIS PACIFIC REED GRASS	5 GAL	3' O.C.	2	1

#### OPTION 2

SYMBOL	NAME	SIZE	APPROX. SPACING	QUANTITY FOR 4X6	QUANTITY FOR 3X4
A1	FRAGARIA CHILOENSIS BEACH STRAWBERRY	1 GAL	12" O.C.	12	8
B1	HEUCHERA MAXIMA ISLAND ALUM ROOT	1 GAL	18" O.C.	8	4
B2	POLYSTICHUM MUNITUM WESTERN SWORD FERN	1 GAL	3' O.C.	2	0
C3	SYMPHORICARPOS ALBUS SNOWBERRY	1 GAL	3' O.C.	1	1

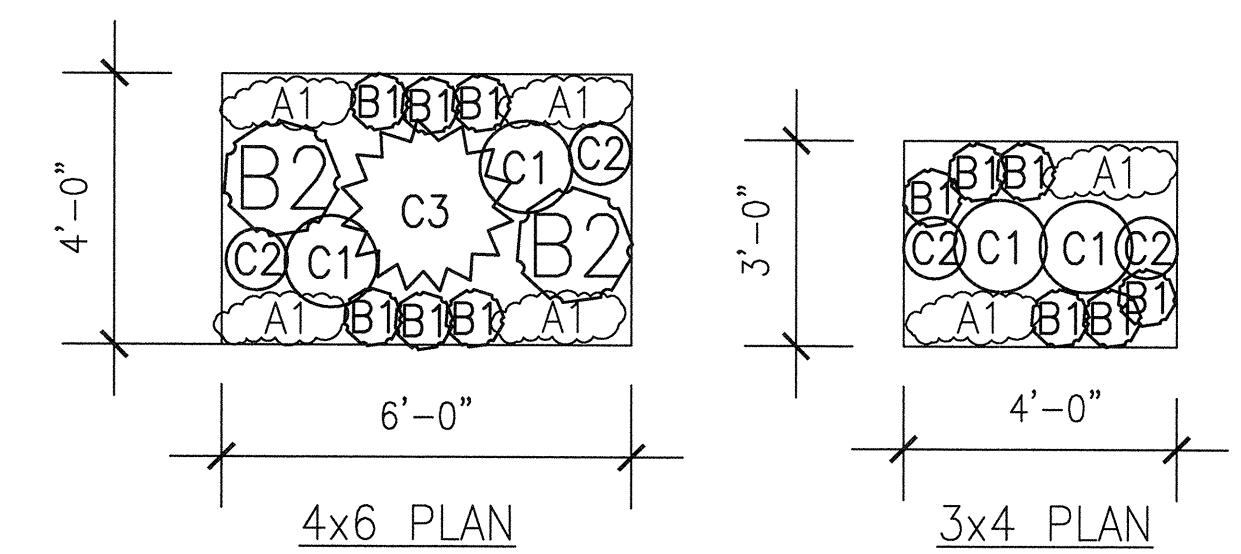
### PLANTING NOTES

REFER TO PLANTING SPECIFICATIONS FOR ADDITIONAL PLANTING INFORMATION.  
PLANTS LISTS PROVIDED ARE FOR THE CONVENIENCE OF THE CONTRACTOR. IN CASE OF DISCREPANCIES, THE PLAN SHALL GOVERN.  
THE PROPERTY OWNER RESERVES THE RIGHT TO MAKE SUBSTITUTIONS, ADDITIONS, AND DELETIONS IN THE PLANTING SCHEME AS THE WORK PROGRESSES.  
CONTRACTOR SHALL REVIEW PLANT MATERIAL AND LOCATION PRIOR TO FINAL PLANTING WITH THE PROPERTY OWNER OR AGENT. LOCATIONS SHOWN ON PLANS ARE DIAGRAMMATIC ONLY.  
UNLESS OTHERWISE NOTED, ALL GROUNDCOVER AND SHRUB SHALL BE SPACED TRIANGULARLY.  
REFER TO CLIMATE ZONE MAP OF SAN FRANCISCO ON SHEET L-0.0.

## TRANSITION/SUN BELT ZONE PLANTING PLANS

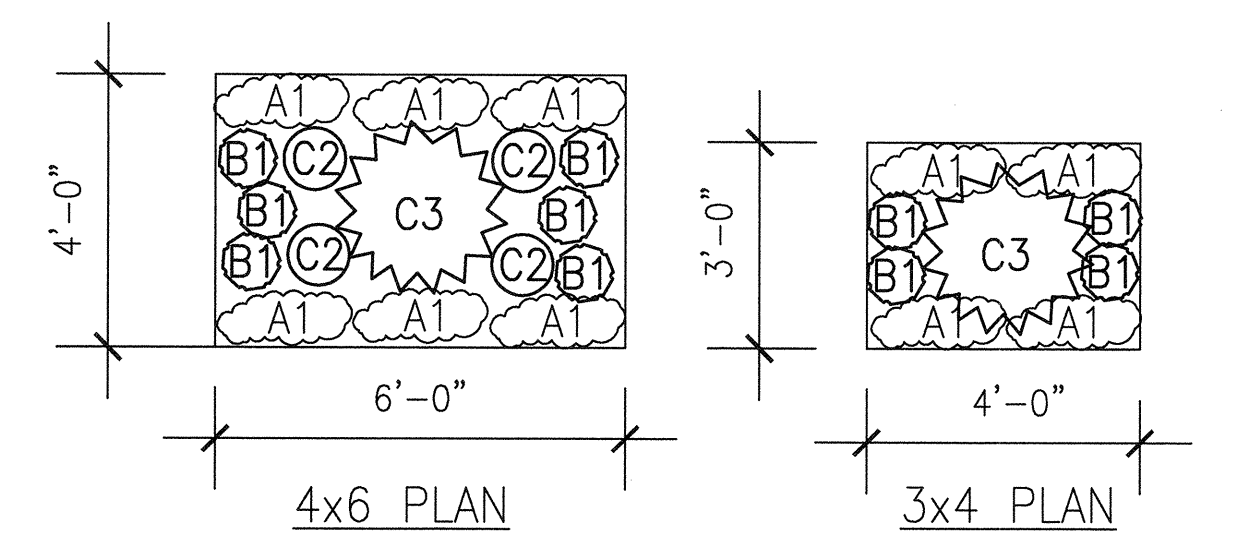
### SUNNY CONDITONS (South Facing)

#### OPTION 1 FOR 4X6 and 3x4 PLANTING MODULE



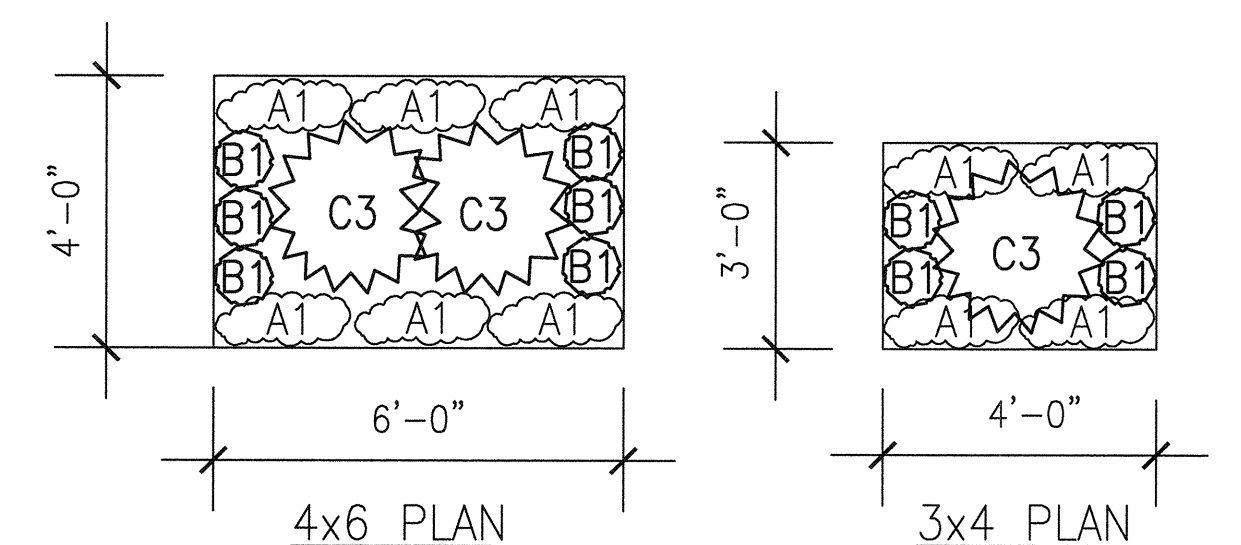
### SUNNY CONDITONS (South Facing)

#### OPTION 2 FOR 4X6 and 3x4 PLANTING MODULE



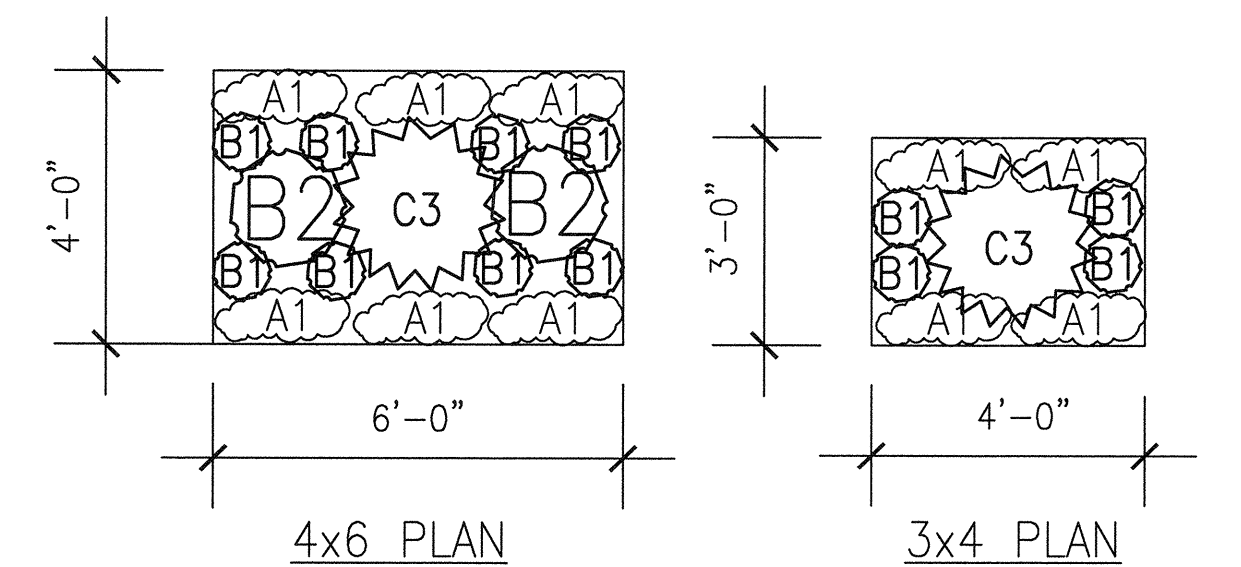
### SHADE CONDITONS (North Facing)

#### OPTION 1 FOR 4X6 and 3x4 PLANTING MODULE

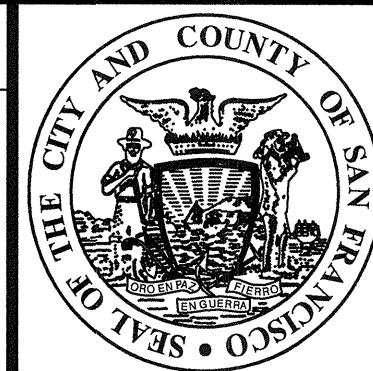


### SHADE CONDITONS (North Facing)

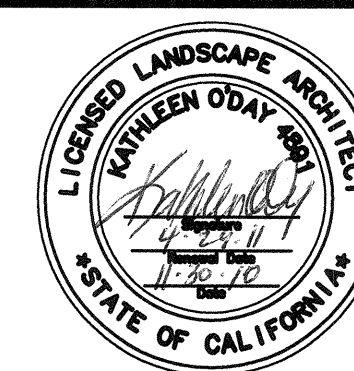
#### OPTION 2 FOR 4X6 and 3x4 PLANTING MODULE



REFERENCE INFORMATION  
& FILE NO. OF SURVEYS



**BUREAU OF ENGINEERING**  
DEPARTMENT OF PUBLIC WORKS  
CITY AND COUNTY OF SAN FRANCISCO



DESIGNED: DATE: KO 10/8/10  
DRAWN: DATE: KO/EB 10/8/10  
CHECKED: DATE: SH 10/8/10

APPROVED  
SECTION MANAGER DATE:  
DEPUTY BUREAU MANAGER DATE:  
CITY ENGINEER DATE:

SCALE:  
NOT TO SCALE  
SHEET OF SHEETS  
4 OF 7

CITY OF SAN FRANCISCO  
SIDEWALK LANDSCAPING  
REFERENCE DRAWINGS  
PLANTING PALATTES AND PLAN LAYOUTS  
FOR 4X6 AND 3X4 PLANTING BED MODULES

CONTRACT NO.  
DRAWING NO. L-2.0  
FILE NO.  
REV. NO.

NO.	DATE	DESCRIPTION	BY	APP.
TABLE OF REVISIONS				
THIS DRAWING WAS LAST MODIFIED: 10/28/10 16:32, BY: ko'day				

Xrefs: V:\####\_SF\_Sidewalk\_Greening\Drawings-Sketches\Autocad sheets for BSM\BOES\_TBD.dwg  
Drawing Path: S:\LA\Sidewalk\_Landscaping\Drawings-Sketches\Autocad for web and bsm\LA-2\_Sidewalk\_Landscaping\Planting\Reference\Boes.dwg Login: ko'day  
Plot Time: Tue, 16 Nov 2010 10:18am Measurement Units are English Model Units: Inches