

Sidewalk Landscaping: A Resident's Guide

Why Landscape Your Sidewalk?

Landscaped sidewalks look great, provide habitat for birds and butterflies, reduce run-off, improve the quality of our ground water, improve livability of a neighborhood and increases property values.

How Do I Participate?

Apply for a Sidewalk Landscaping Permit through the DPW's Urban Forestry Permits and Policy. To find out more about the program, get instructions and information, and download an application go to www.sfdpw.org and select "Services A-Z" tab, scroll to "Sidewalk Landscaping Permit".

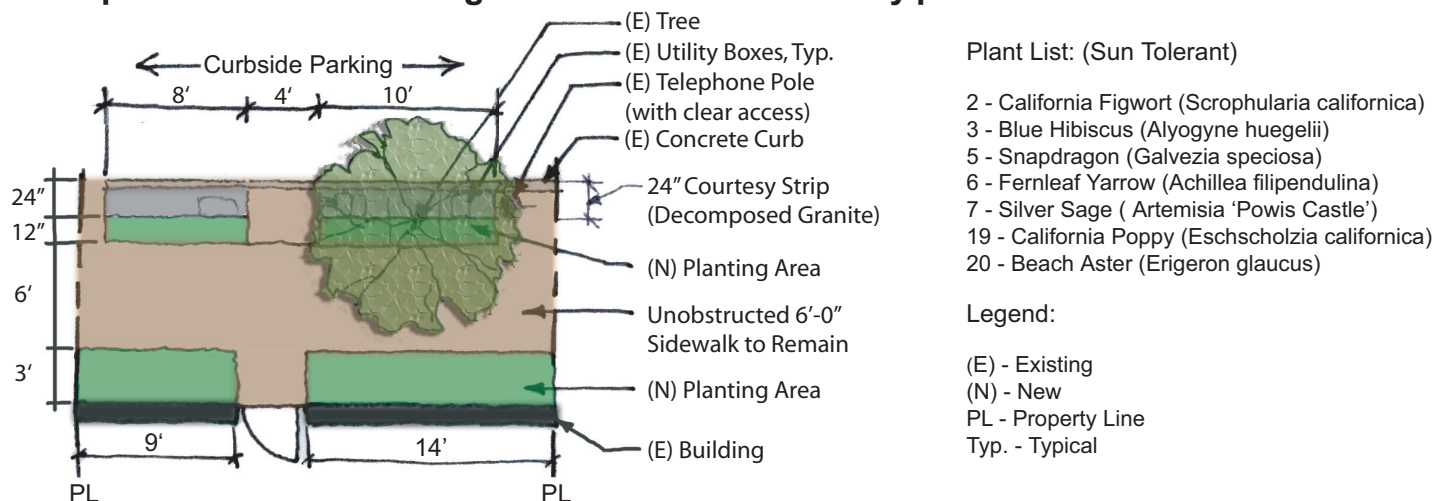
Can I hire a contractor through DPW?

Select one of our pre-designed landscapes, designed for your area and exposure. Complete the application, indicating which of the landscapes you would like installed and the approximate square footage you believe will work for your site. DPW staff will contact you to discuss details and provide you with a preliminary cost estimate. If you agree to proceed, DPW will send an installation agreement for you to sign and return to DPW. DPW will contact you once the exact installation date is finalized.

Examples of Successful Permitted Projects



Sample Plan Drawing for Permit with typical 12' Sidewalk



Costs to Resident: (per 2009 average costs to Residents)

- Sidewalk Landscape Permit:** approx. \$160-215 (varies if individual property or group of neighboring properties collaborate) See DPW Sidewalk Landscaping Permit for updated costs.
- Demolition and removal of concrete sidewalk:** \$5 per square foot approx.
- Plant material:** \$6-10 per square foot (varies).
- Paving Material for Courtesy Strip and Path adjacent Parking:** \$2-10 per square foot (varies).
- Edge Treatment:** \$15-40 approx. (varies).
- Watering costs:** For first year after planting, water once per week fully soaking soil for plant establishment. Water during dry season. After first year water requirements vary depending on plant selection. (Refer to SF Drought Tolerant Plant List Descriptions or consult local nurseries).
- Maintenance and Upkeep:** Residents are required to keep planting beds free of debris and weed, to replace stolen or damaged plants or materials. Expect approx. 1/2 hour/ week minimum to weed and remove garbage.