



OCEAN AVE

CORRIDOR DESIGN

MANOR DRIVE TO SAN JOSE AVENUE

OCEAN AVENUE CORRIDOR DESIGN PROJECT

PUBLIC WORKSHOP #3 | JULY 9, 2014

SAN FRANCISCO
PLANNING DEPARTMENT



Meeting Outline

- 6:00-6:10pm
Arrive & Sign-in
- 6:10 – 6:45pm
Presentation
- 6:45-6:50pm
Question and Answer
- 6:50-7:30pm
Open House

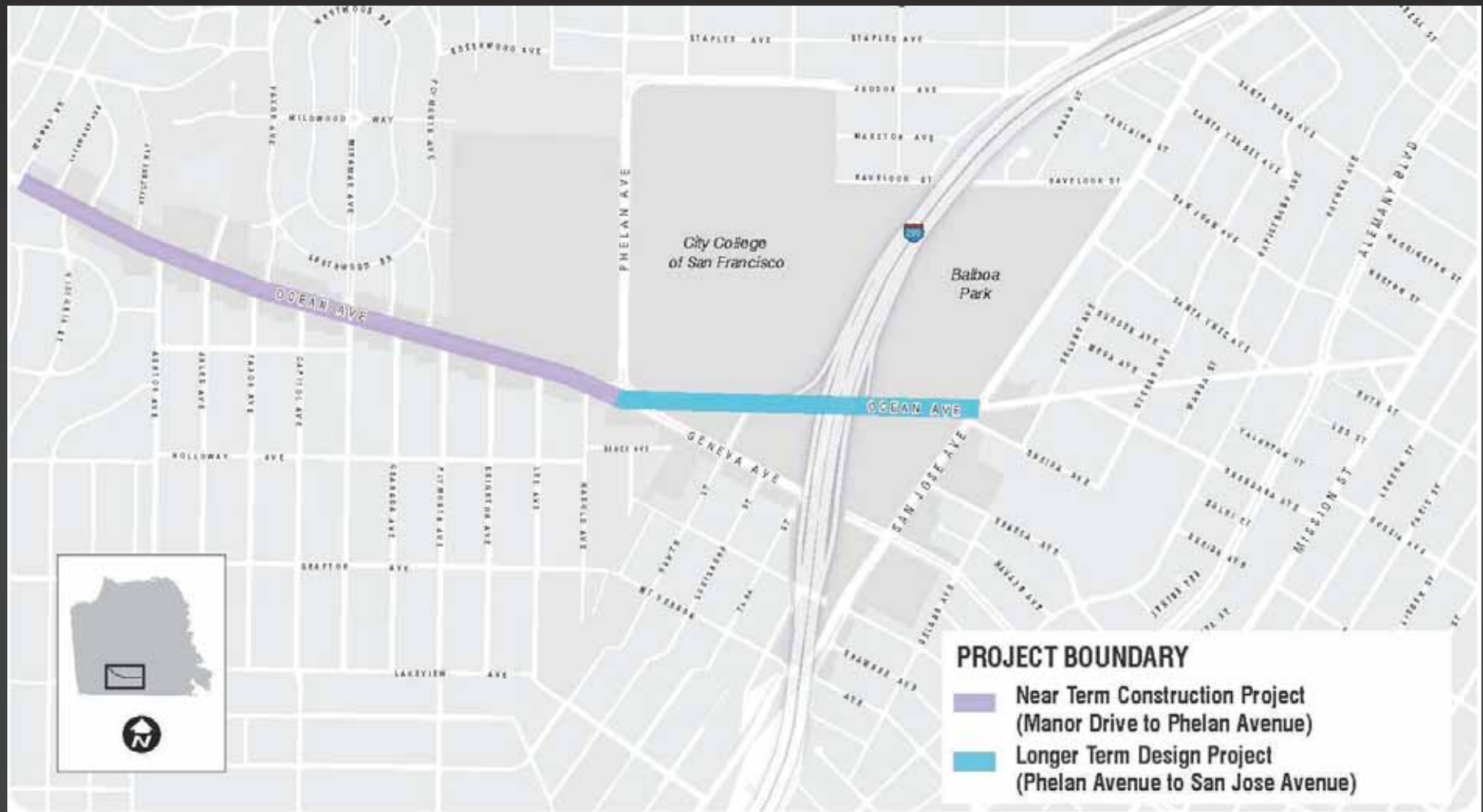
Today's Presentation

- Title VI
- Project Overview
- Updates on the longer term design
- Overview of coordination efforts with other projects
- What we heard at previous Public Workshops
- Concept design for the near term construction project

Project Overview

Two Projects underway on Ocean Avenue

1. Near Term Construction Project
2. Longer Term Design Project



Near Term Construction Project

PROJECT BOUNDARY:

- Manor to Phelan Avenue

TIMELINE:

- Planning: March 2014 to July 2014:
- Construction Drawings: Summer to Fall 2014
- Construction: Spring 2015

Longer Term Design Project

PROJECT BOUNDARY:

- Phelan Avenue to San Jose Avenue

FUNDING :

- Federal transportation funds for planning in Priority Development Areas (PDAs)

TIMELINE:

- Planning: January 2014 to August 2015
 - Existing Conditions Analysis
 - Develop Design Options
 - Detailed Design, Cost Estimate and Phasing Plan

Community Outreach to Date

- Site Walk
March 8, 2014
30 participants
- Public Workshop #1
March 12, 2014
50 participants
- Public Workshop #2
May 14, 2014
30 participants
- Public Workshop #3:
July 2014



Longer Term Design: Phelan to San Jose

Longer Term Design: Phelan to San Jose

Overview

- Project Goal: Develop a streetscape design for Ocean Avenue that improves the walking experience, better balances the needs of many different users, and creates a more enjoyable and visually pleasing street.

Longer Term Design: Phelan to San Jose

Informing the concept design

- Feedback received during this planning effort
- Existing plans, studies and policies
- Technical analysis



Longer Term Design: Phelan to San Jose

Next Steps

- Begin technical analysis
- Ongoing engagement with community members and neighborhood groups.
- Next workshop Fall 2014
 - present design options
 - discuss sidewalk amenities and the look and feel of the street.

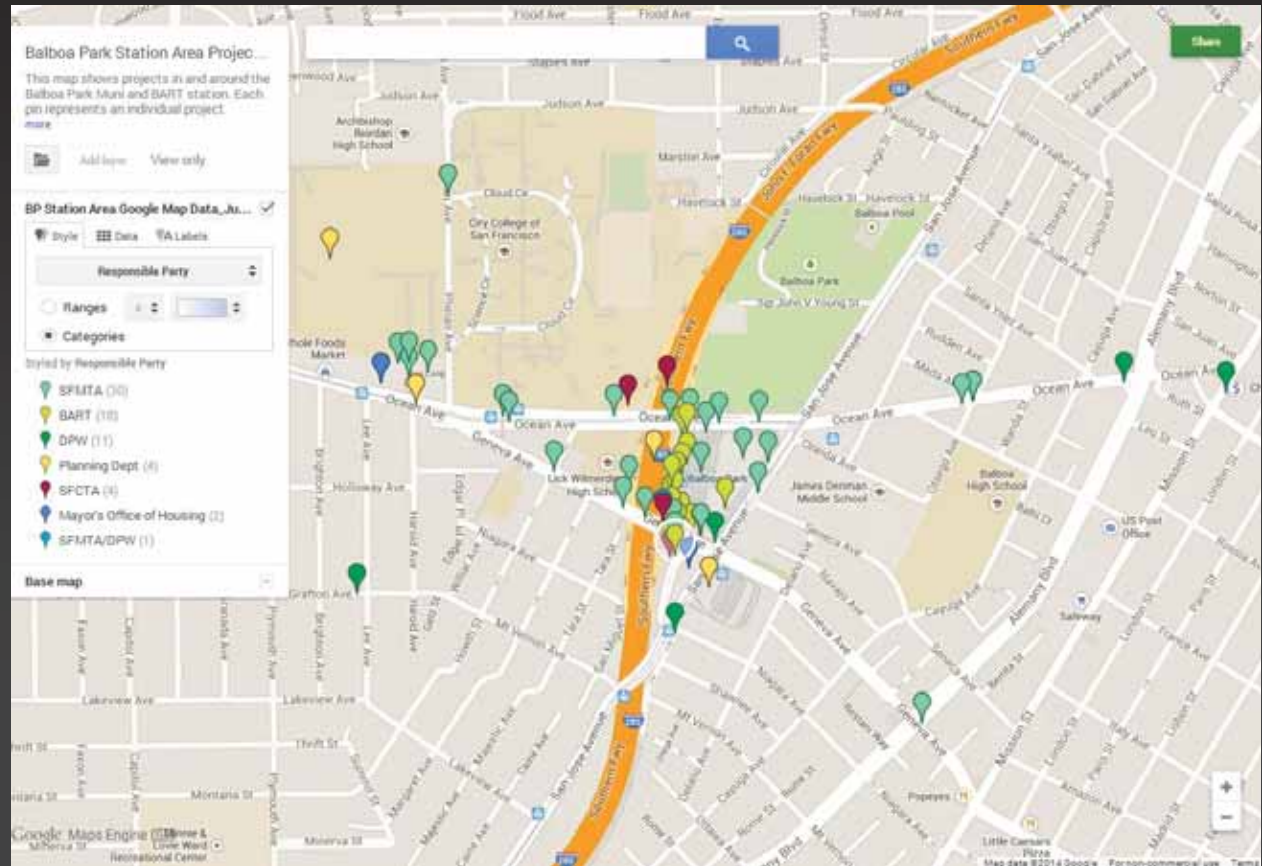
Balboa Park Station Area Projects

Plans & Studies

- Balboa Park Area Plan, SF Planning, 2009
- Balboa Park Pedestrian and Bicycle Connection Project, SFMTA, 2009
- Balboa Park Capacity Study, 2011
- Balboa Park Circulation Study, SFCTA, 2014

Balboa Park Station Area Project Status Map

- Online map
- Track projects in the area
- Update map and project status bi-annually



website link:

<http://sfmta.com/projects-planning/projects/balboa-park-station-project-status-map>

Planned Projects and Proposed Improvements



Area Projects

Ingleside Garden

- Construction is expected to start in November 2014



Area Projects

- Phelan Loop, complete August 2014
- Unity Plaza, complete December 2015
- 1100 Ocean Ave, complete January 2015



Area Projects

Ocean Avenue Mobile Parklet

- Five locations selected
- Foglifter Cafe @ 1901 Ocean Ave. will be the first site, installation anticipated summer 2014



Near Term Construction Project

Feedback: Community Meeting #1

Community Priorities

1. Greening/landscaping
2. Intersection improvements
3. Gathering spaces/sidewalk seating
4. Sidewalk widening (Future phase due to cost)
5. Bike improvements/racks
6. Consolidated newsracks

Community Meeting #2



LEGEND

- FREQUENTED BUSINESSES
- CURRENT OR FUTURE DEVELOPMENT PROJECTS
- EXISTING TRANSIT STOP

STREETSCAPE IMPROVEMENTS

- T-INTERSECTION GREENING AT CAPITOL AVE
- BULB-OUT AT CAPITOL AVE
- COMMUNITY ACTIVITY SPACE
- CONSOLIDATED NEWSRACKS
- PEDESTRIAN INTERSECTION IMPROVEMENTS

GREENING IMPROVEMENTS

- EXISTING SIDEWALK GREENING
- GENERAL SIDEWALK GREENING
- PLANTING BETWEEN PALM TREES
- INFILL TREE PLANTING
- FULL INTERSECTION GREENING AT MIRAMAR

ADDITIONAL IMPROVEMENTS

- T-INTERSECTION GREENING AT ASHTON AVE
- BULB-OUT AT ASHTON AVE
- T-INTERSECTION GREENING AT GRANADA AVE
- BULB-OUT AT GRANADA AVE

50 0 50 100
SCALE: 1"=50'

Community Meeting #2



What we heard: Public Workshop #2

Priority of additional streetscape improvements

1

T-intersection at Ashton Ave.

2

T-intersection at Granada Ave.

3

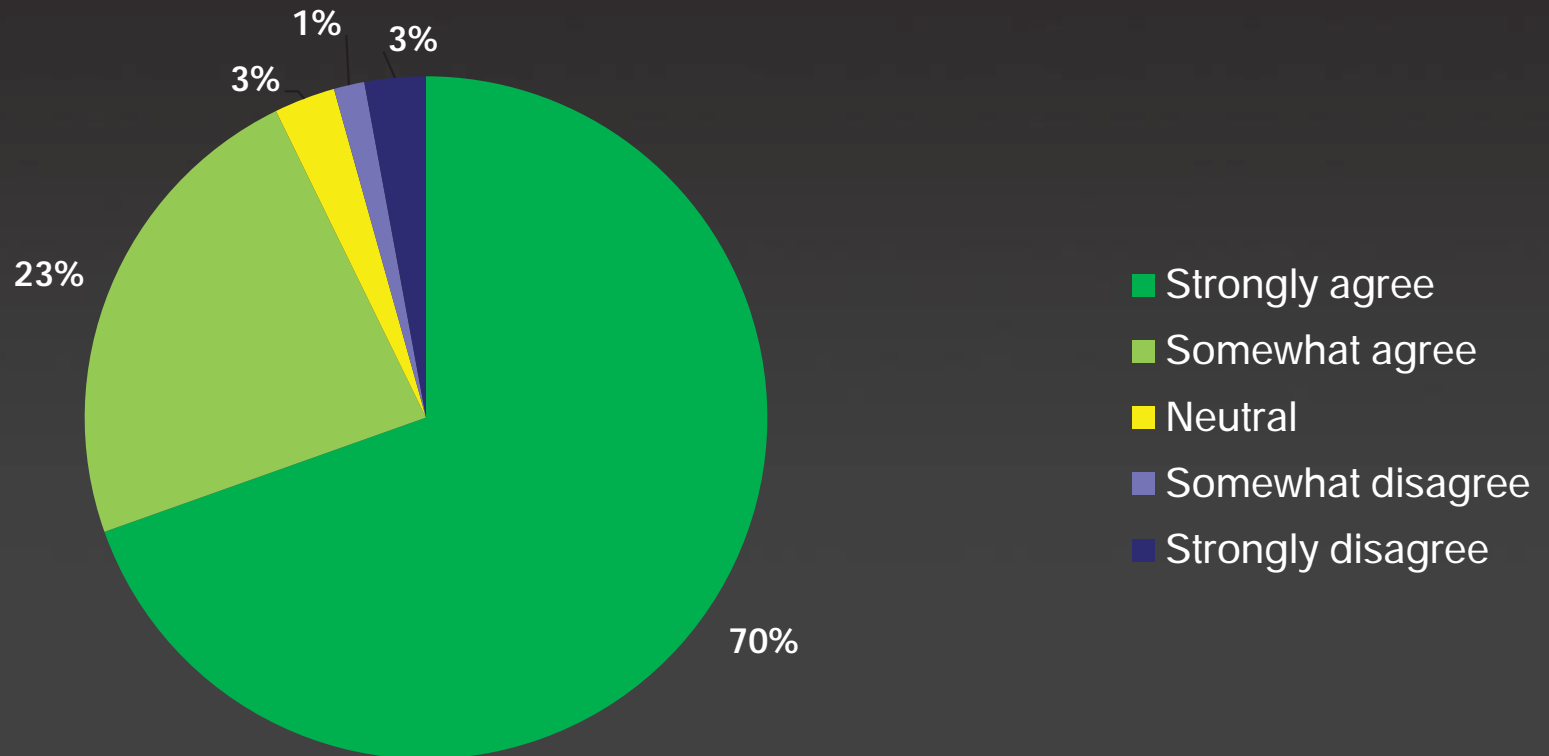
Bulb-out at Granada Ave.

4

Bulb-out at Ashton

What we heard: Public Workshop #2

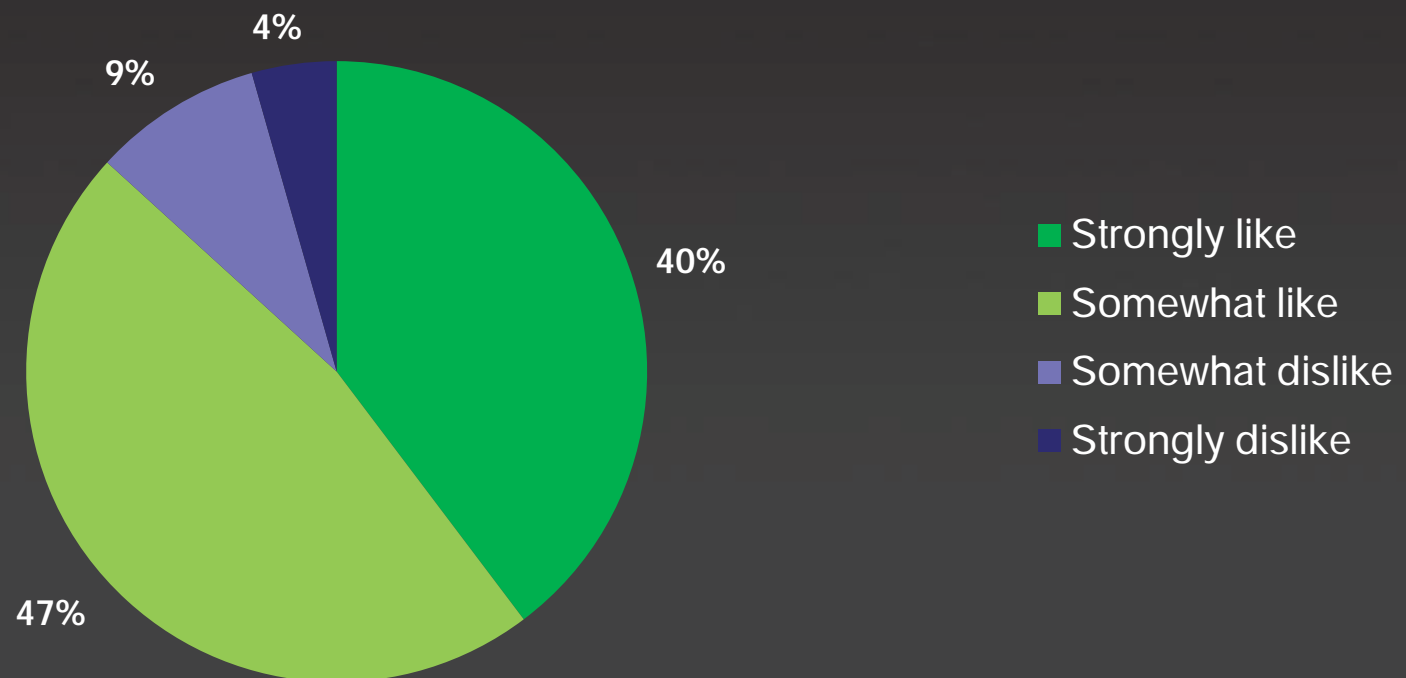
Do you agree with the streetscape improvements?



93% of respondents agree with the baseline streetscape improvements.

What we heard: Public Workshop #2

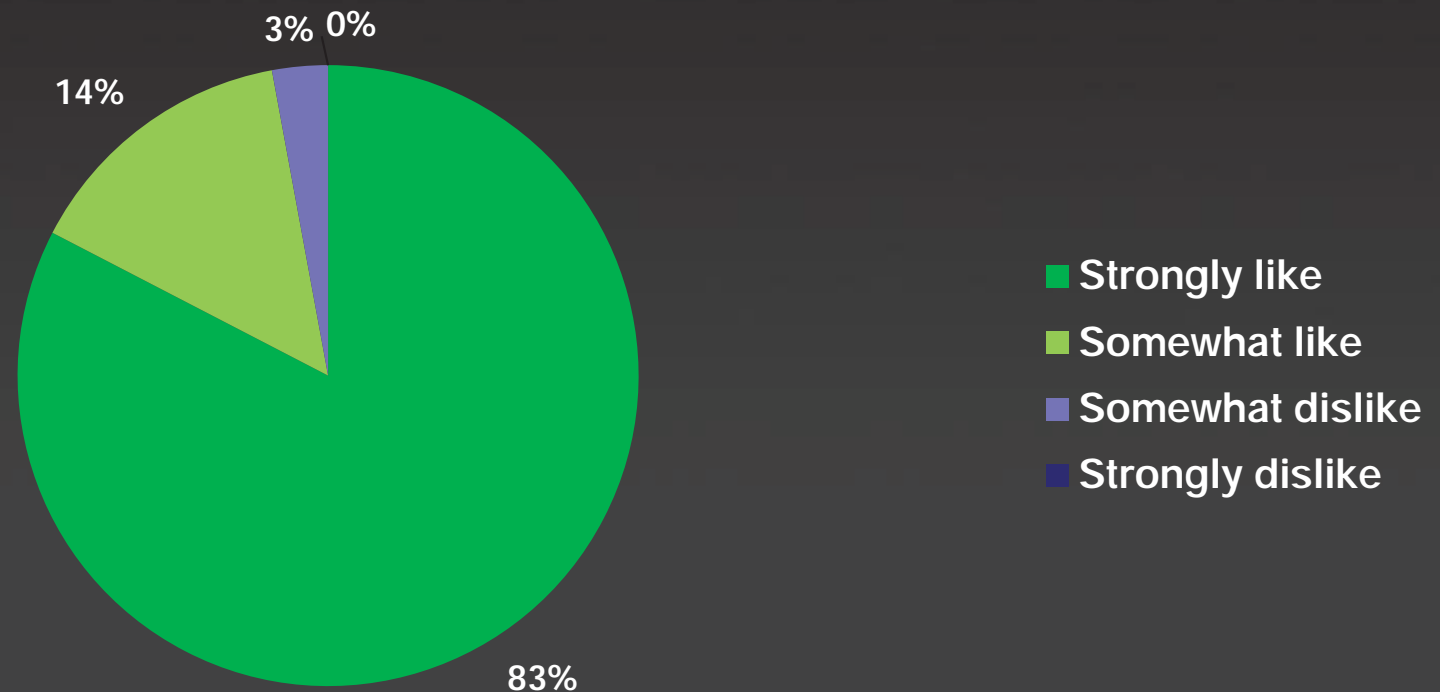
Do you like the selection of the container plantings?



87% of respondents like the container plantings design.

What we heard: Public Workshop #2

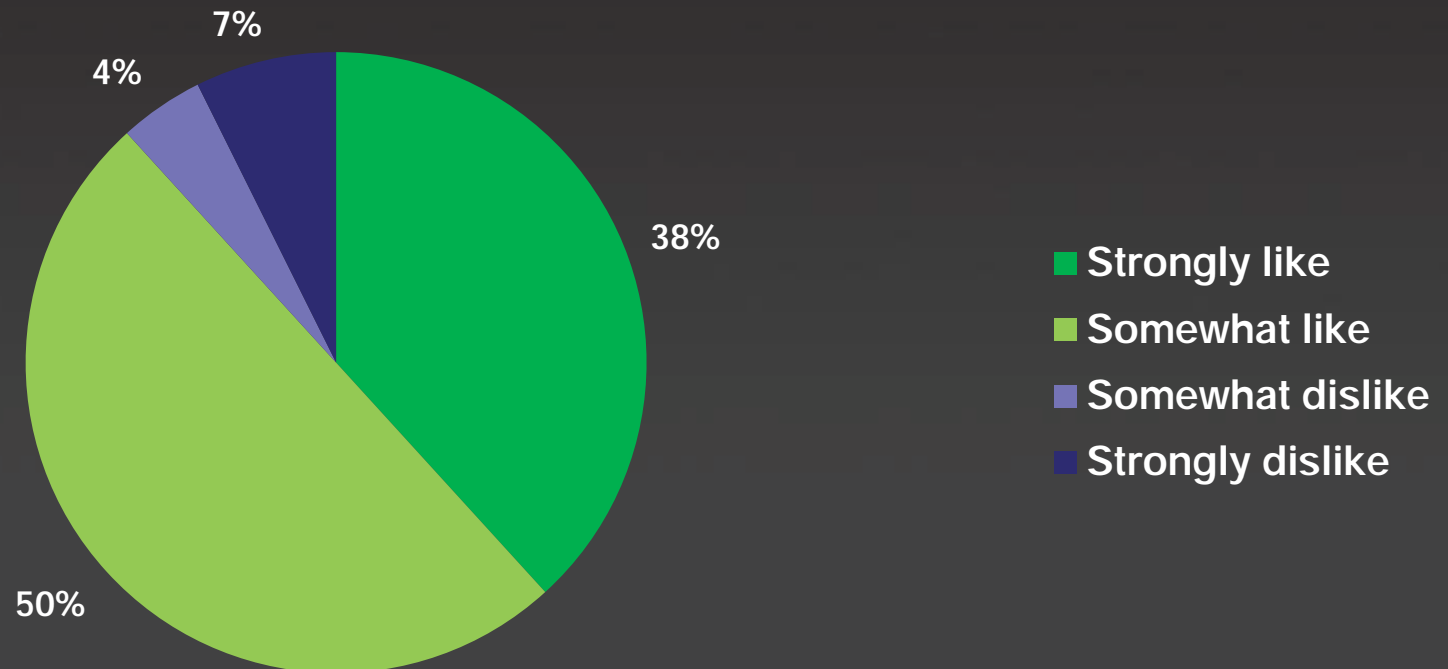
Do you like the use of a low maintenance and low water use succulent/grass planting palette?



97% of respondents like landscaping selection.

What we heard: Public Workshop #2

Do you like the selection of the bench seating presented?



88% of respondents like the bench seating designs.

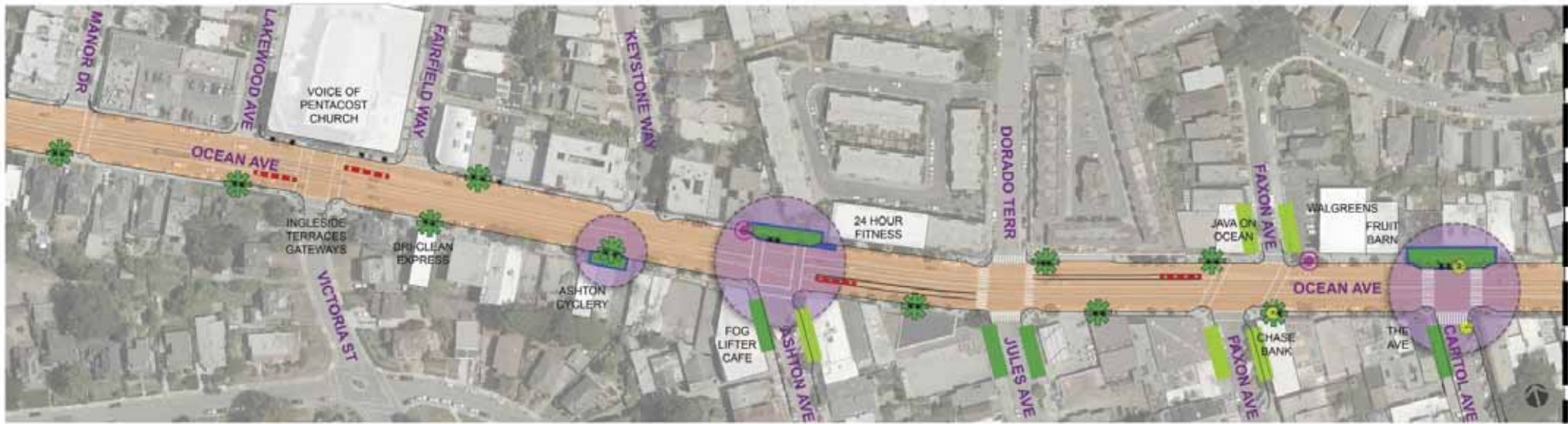
What we heard: Public Workshop #2

Additional comments:

- 'Great concepts! Seems like these simple ideas together would help create a better walking and mingling space on Ocean Avenue, in addition to adding some much needed greening to the corridor'
- 'I think this will add a great appeal to the corridor, by giving it a more contemporary look'
- 'As a frequent pedestrian, motorist and occasional cyclist, I think the proposed streetscape improvements will greatly increase the quality of life for residents along the Ocean Avenue corridor.'
- 'As a resident of Ingleside, I'm very excited to see this initiative. Ocean Avenue has long been overlooked by projects like this. Thank you!'
- "Please add bike improvements like green-back-sharrows. '
- 'I hope there will be maintenance of the greening.'



**OCEAN AVENUE NEAR TERM IMPROVEMENTS
DESIGN PROPOSAL**



LEGEND

- FREQUENTED BUSINESSES
- CURRENT OR FUTURE DEVELOPMENT PROJECTS
- EXISTING TRANSIT STOP

STREETSCAPE IMPROVEMENTS

- T-INTERSECTION GREENING AT CAPITOL AVE, ASHTON AVE, GRANADA AVE, & KEYSTONE WAY
- COMMUNITY ACTIVITY SPACE
- CONSOLIDATED NEWSRACKS
- (NOT SHOWN) PEDESTRIAN BRIDGE CLEANING

GREENING IMPROVEMENTS

- EXISTING SIDEWALK GREENING
- GENERAL SIDEWALK GREENING
- PLANTING BETWEEN PALM TREES
- INFILL TREE PLANTING

FRUIT
BARN

CONTINENTAL
APPLIANCE
GOLDEN
CHINA

RENAISSANCE
FURNITURE
RESTORATION
DIMOND
HAIR STUDIO

SEA GARDEN
RESTAURANT

OCEAN AVE

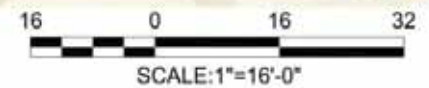
OCEAN AVE

CAPITOL
AVE

DOLLAR
BEST
OCEAN
HAIR
DESIGN
STAR
NAILS
A-1
SHOE
REPAIR
THE AVE
BAR &
LOUNGE

HOMERUN
LIQUOR'S
MARY
ANNE
NAIL &
HAIR
"R" US
WATERFALL
WELLNESS
JO JO'S
CAFE

OCEAN AVE
INTERSECTION AT CAPITOL



FRUIT BARN

CONTINENTAL APPLIANCE
GOLDEN CHINA
DIMOND HAIR STUDIO

RENAISSANCE FURNITURE RESTORATION

SEA GARDEN RESTAURANT

SEATS/ BENCHES
POTTED PLANTERS
SPECIAL PAVING

SIDEWALK PLANTER
NEW PALM TREE
BIKE RACKS

COMMUNITY POST
(E) LIGHT POLES, TYP.
CONTINENTAL CROSSWALKS

OCEAN AVE

OCEAN AVE

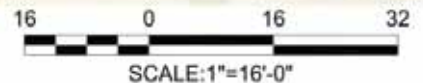
POTTED PLANTERS

DOLLAR BEST
OCEAN HAIR DESIGN
STAR NAILS
A-1 SHOE REPAIR
THE AVE BAR & LOUNGE

CAPITOL AVE

HOMERUN LIQUOR'S
MARY ANNE NAIL & HAIR "R" US
WATERFALL WELLNESS
JO JO'S CAFE

OCEAN AVE
INTERSECTION AT CAPITOL



General Streetscape Greening



Before: Needs Greening



After



Replace

General Streetscape Greening: Plant Palette



Kniphofia



Phormium



Lomandra



Aloe



Senecio



Agave

T- Intersections Improvements

Special Paving & Bike Racks

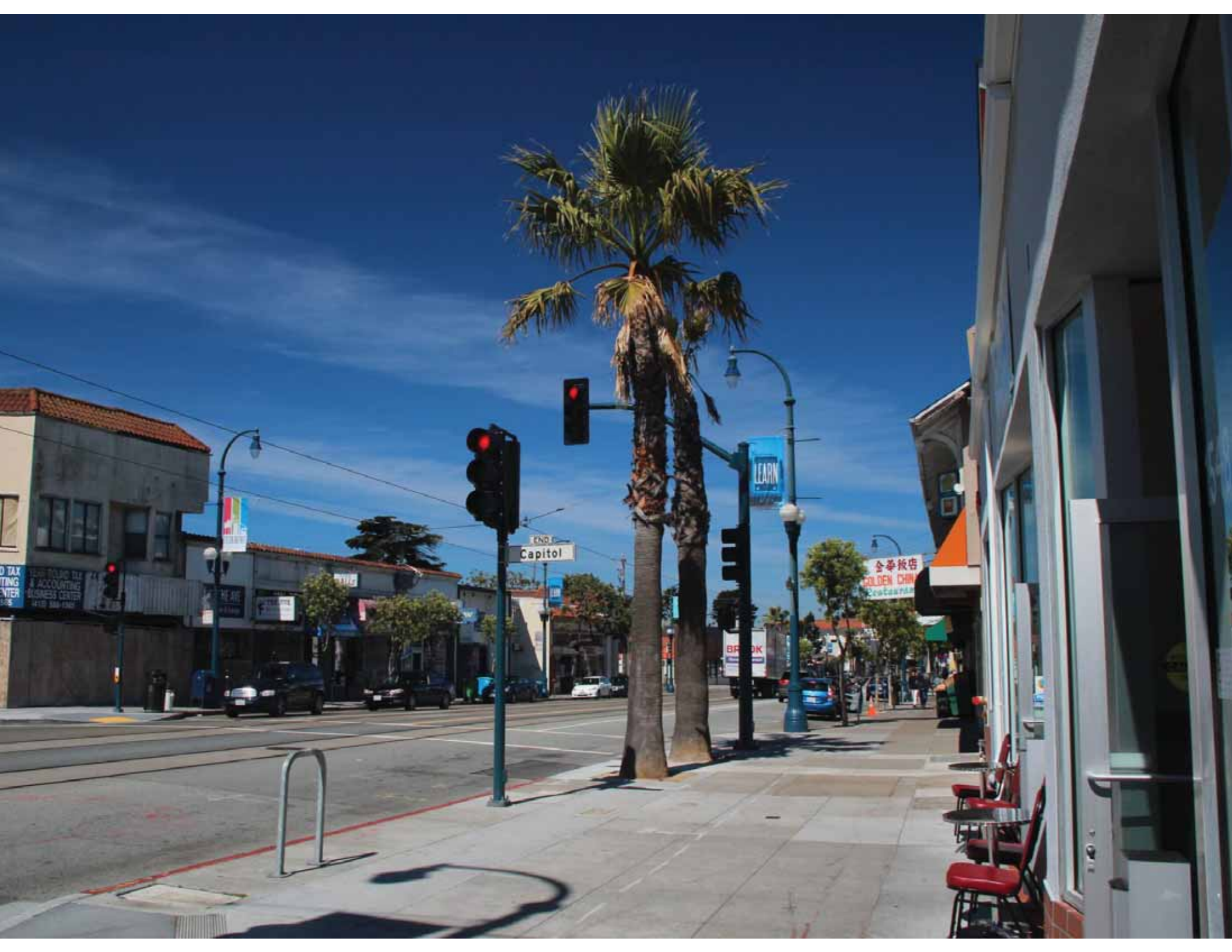


CONTAINER PLANTINGS



BENCH SEATING





D TAX
TING
ENTER
S

YEAR ROUND TAX
& ACCOUNTING
BUSINESS CENTER
415 344-4192

THE AVE

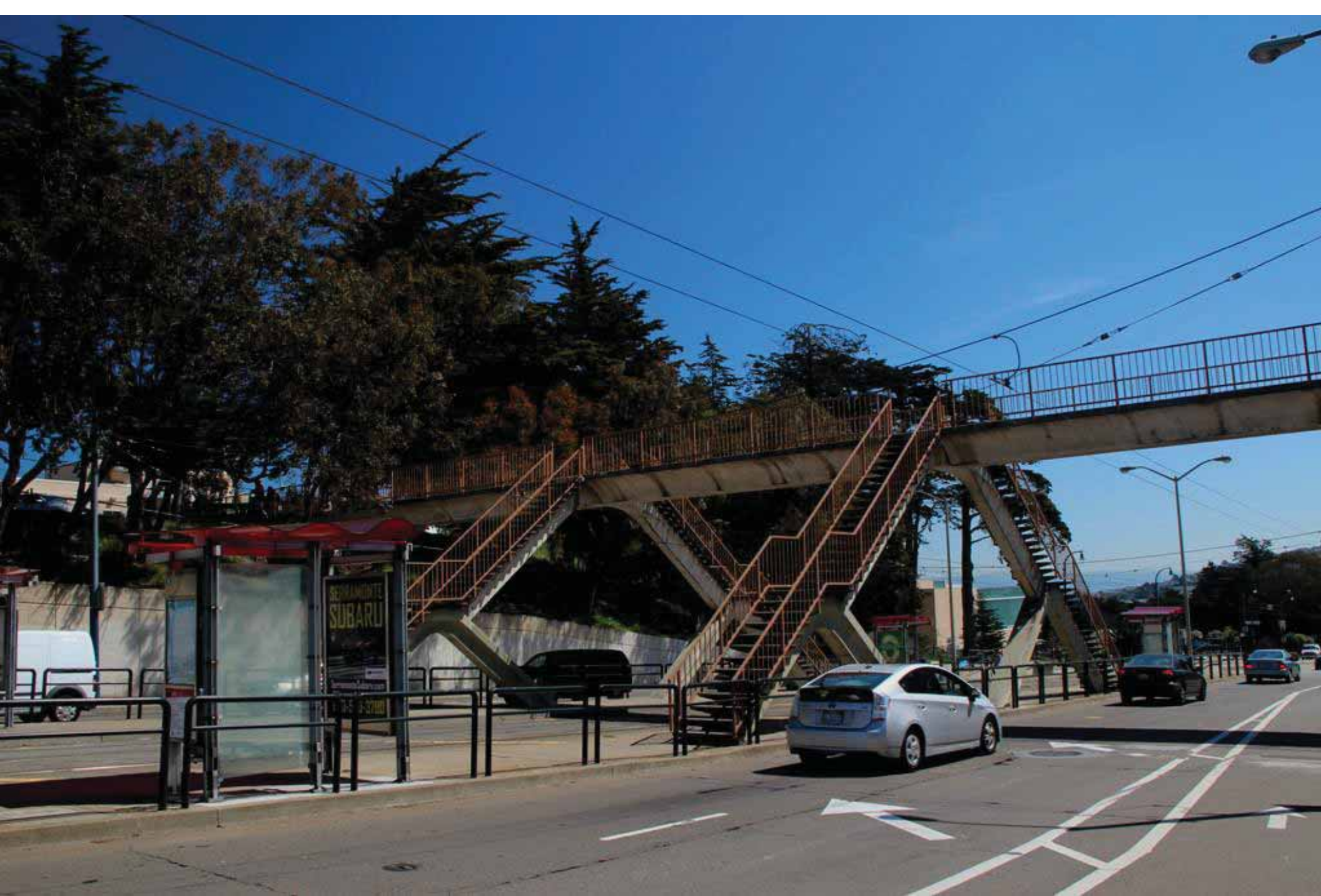
Capitol

LEARN

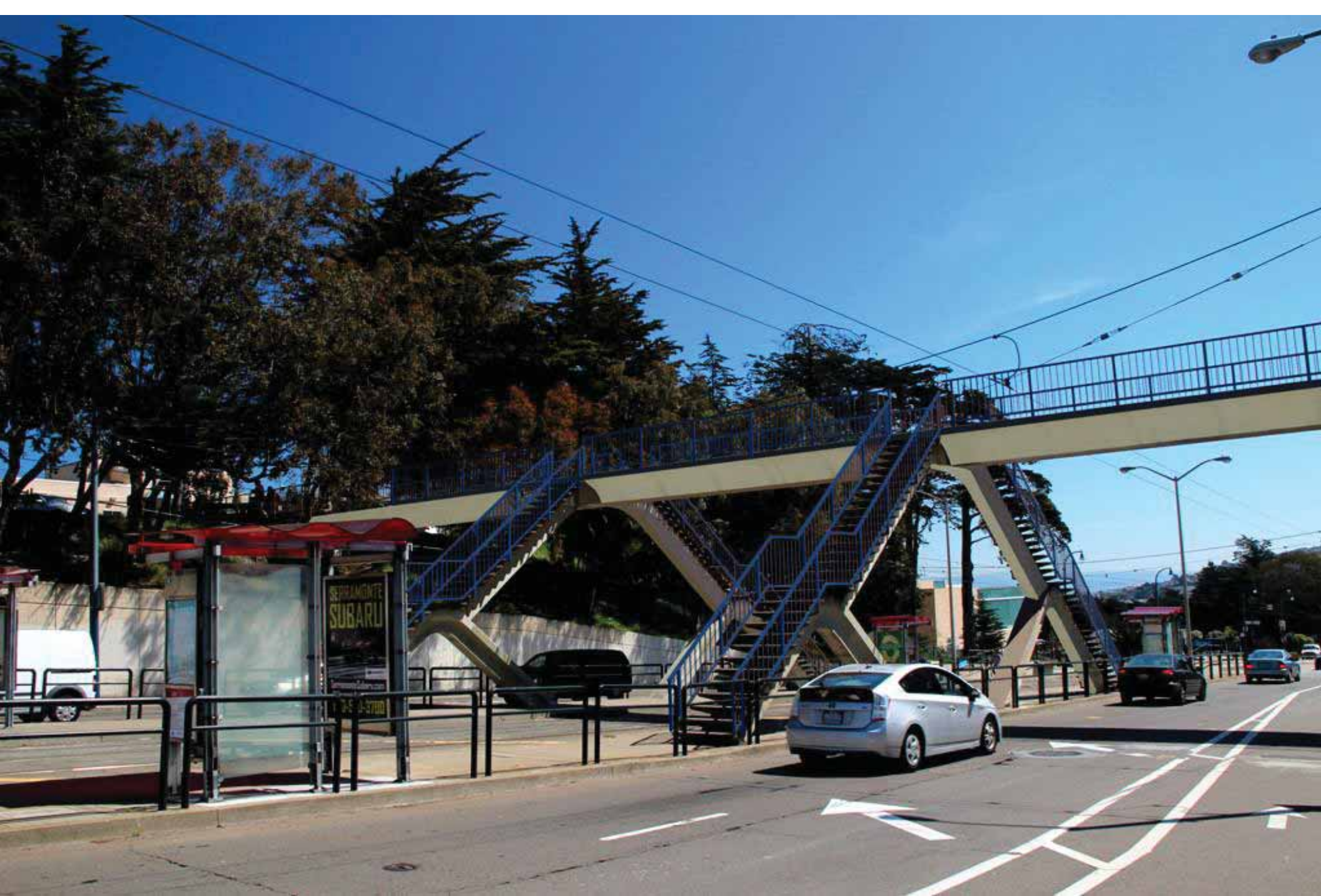
金華飯店
GOLDEN CHINA
Restaurant

BRK



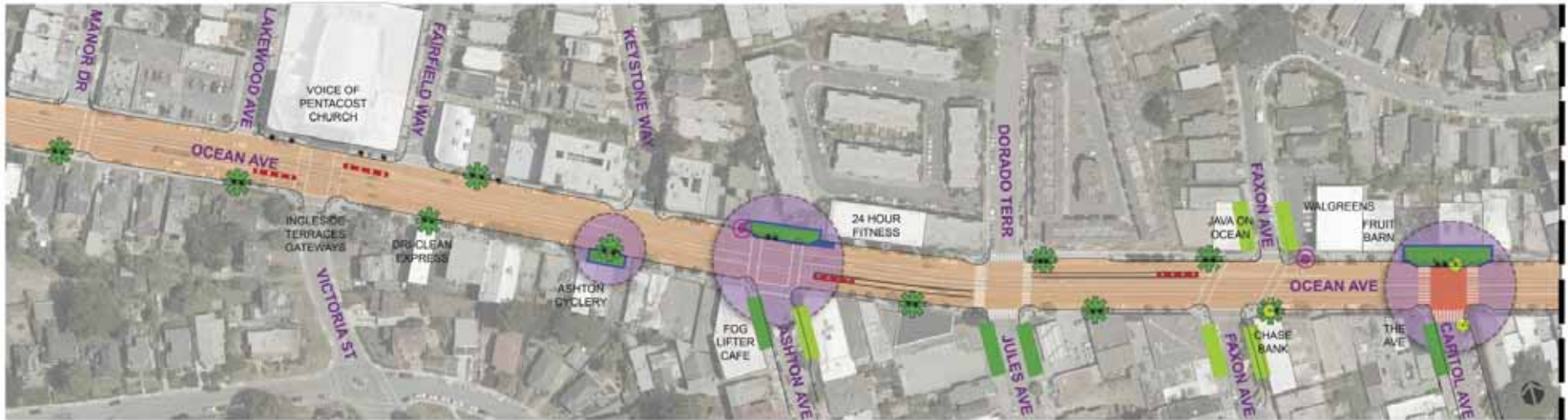


OCEAN AVENUE CORRIDOR DESIGN PROJECT



OCEAN AVENUE CORRIDOR DESIGN PROJECT

Vision Zero Intersection Improvements



LEGEND

- FREQUENTED BUSINESSES
- CURRENT OR FUTURE DEVELOPMENT PROJECTS
- EXISTING TRANSIT STOP

STREETSCAPE IMPROVEMENTS

- T-INTERSECTION GREENING AT CAPITOL AVE, ASHTON AVE, GRANADA AVE, & KEYSTONE WAY
- COMMUNITY ACTIVITY SPACE
- CONSOLIDATED NEWSRACKS
- (NOT SHOWN) PEDESTRIAN BRIDGE CLEANING
- PEDESTRIAN INTERSECTION IMPROVEMENTS

GREENING IMPROVEMENTS

- EXISTING SIDEWALK GREENING
- GENERAL SIDEWALK GREENING
- PLANTING BETWEEN PALM TREES
- INFILL TREE PLANTING

Summary of Near Term Improvements

- T-Intersection Greening at Capitol Ave, Ashton Ave, Granada Ave & Keystone Way (with special paving, site furnishings, bike racks and container planters)
- Consolidated Newsracks
- Pedestrian Bridge Cleaning & Improvements
- Pedestrian Intersection Improvements
- General Sidewalk Greening
- Planting Between Palm Trees
- Infill Tree Planting

“Cities have the capability of providing something for everybody, only because, and only when, they are created by everybody.”

— Jane Jacobs

THANK YOU

<http://oceanavenue.sfplanning.org>

<http://sfdpw.org/ocean>

SAN FRANCISCO
PLANNING DEPARTMENT

