

Lower 24th Street Ficus Trees



Ficus History

A photograph of a large, gnarled Ficus tree in front of a multi-story building with a bay window. A dark SUV is parked on the left, and a white SUV is partially visible behind the tree. The entire image has a green color overlay.



- Ficus trees are common in SF (more than 7,000) and have an impressive canopy
- 2014 Director's Order eased removal criteria to address increased number of large limb failures as ficus began to age
- Public Works is in the process of identifying specific ficus trees that are vulnerable to failure near schools, senior centers, along highly travelled corridors, neighborhood commercial districts and on busy street corners



Ficus trees are considered vulnerable to failure if they:

- have competing trunks
- have a history of limb failures
- have a live canopy that makes up less than 30 percent of the tree
- are experiencing canopy decline
- have roots that have been significantly pruned
- are at least 50 feet tall
- have a canopy or trunk that conflicts with streetlights or power lines

Scar from fallen limb, now filled with decay

Competing branches







RICH'S AUTO BODY



Rich's Auto Body

180

BODY & ENTRANCE

190





Healthy canopy



Declining canopy





LA ME











Ficus: A citywide safety issue

Fallen Tree Shuts Down Fillmore Street

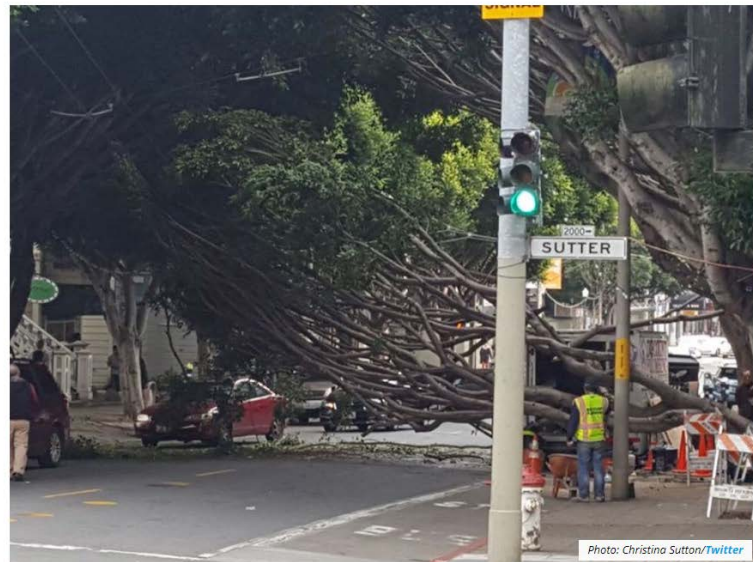


Photo: Christina Sutton/Twitter

Mon, January 29, 2018, 5:34pm



by **Walter Thompson**
@YourProtagonist
website

Neighborhoods
Fillmore, Lower Pac Heights

Breaking News > The City > San Francisco News > Transit

Storm knocks down trees, causes Muni delays



A toppled tree blocks Mission Street near Fourth Street after a storm drenched San Francisco and the Bay Area on Thursday, Jan. 17, 2019. (Kevin N. Hume/S.F. Examiner)

Trending Articles

Mayor Breed appoints first openly LGBT fire chief to lead SFFD

SFPOA splits from ex-president Gary Delagnes over remarks about Adachi

New version of housing density bill calls for suburbs to 'do their share'

Residents balk at plans for waterfront Navigation Center

SF to officially recognize incarceration as a public health issue



Massive tree falls onto Dolores Street, smashes Audi

By **Amy Graff**, SFGATE Published 2:58 pm PDT, Friday, May 18, 2018



A Tree Falls On Fell Street



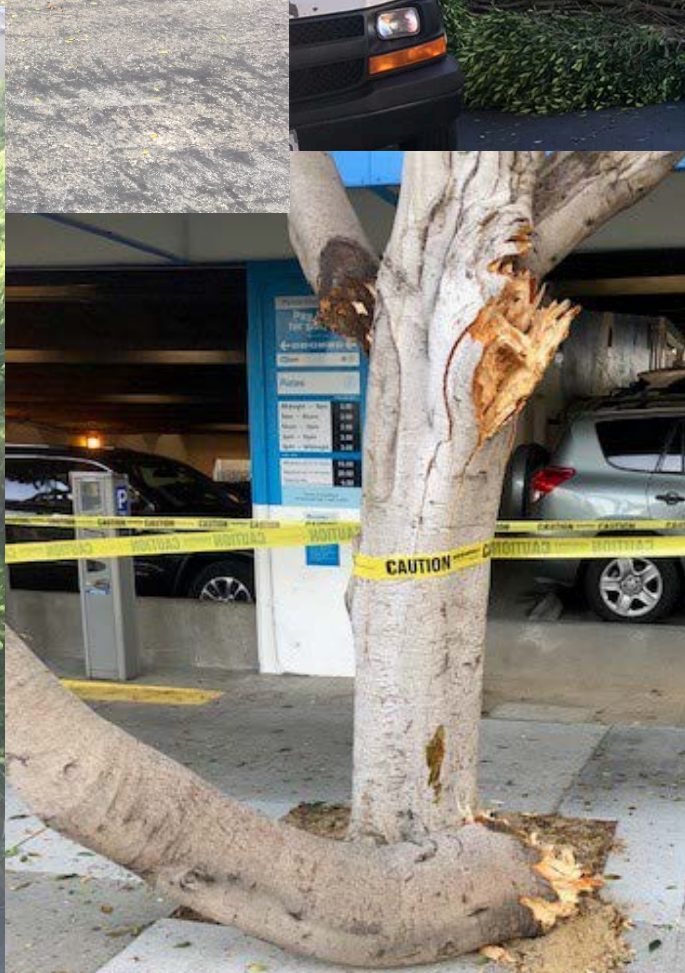
Twitter / @josephwilson

Sat, August 8, 2015, 3:35pm



by **Andrew Dudley**

Neighborhoods





Mels
drive-in
HOME COOKING

FOR ANY
NO STOPPING
ANY TIME

...we have to do
anything we can to
protect the earth."
- Arnold Schwarzenegger





Citywide Ficus Removals

- Fillmore Street
 - Trees removed and in process of replanting
- Oak / Fell Streets
 - Trees removed and in process of replanting
- 16th and Church Street (Everett Middle School)
 - Trees removed and replanted
- Columbus Avenue (Washington Square Park)
 - Seven trees
 - In hearing process
 - Replacement tree species already picked out and ready to plant
- Hayes Valley
 - 39 trees
 - Public notification period ended recently
 - Hearing will be scheduled for April 2019
 - Will be replanted 2-3 months after removals take place

A photograph of a street scene, likely Lower 24th Street, showing a large, fallen tree trunk across the road. The scene is overlaid with a green tint. The tree trunk is the central focus, lying horizontally across the wet pavement. In the background, there are multi-story buildings with windows and balconies, and several cars parked along the street. The overall atmosphere is one of a recent storm or natural event.

**Ficus safety along
Lower 24th Street**

Lower 24th Street has experienced approximately 41 limb failures in the last 10 years

- Lower 24th Street from Mission Street to Potrero is a high pedestrian, cyclist and motor vehicle commercial corridor

Daily Traffic Volumes

	Pedestrians	Vehicles	Cyclists
Mission and 24th	4,388	2,208	34
South Van Ness and 24th	2,148	4,032	20
Totals	6,536	6,240	54

Additional issues

- Pruning for building clearance has caused imbalances
- Narrow sidewalk



January
22
2016

Tree Crashes into Mission Girls Roof After Storm





Between Bryant &
Florida Streets



February 26, 2019

BEFORE

24th St

Google



February 27, 2019

AFTER

Lower 24th Street Tree Removal Plan



Removal Numbers

Ficus before removals	92
Ficus to be removed	32
Ficus to receive experimental pruning	11
Ficus to receive maintenance pruning	49
Non-ficus to be removed	1
Total # Trees to be removed	33

Replanting Numbers

Total replantings / new plantings by BUF along 24 th Street	50
Total replantings / new plantings by FUF to be watered for establishment by Mission Verde (on side streets along the 24 th St corridor)	95
Total # trees after removals & replantings / new plantings	145

Breakdown of work phases

Removals

- Trees and stump grinds
- Dedicated professional tree contractor

Sidewalk Work

- Repair cracked and raised sidewalk
- Enlarge/reduce tree basins
- Move tree basins
- Pave over unplantable basins
- Dedicated Public Works cement crew

Replanting and new plantings

- Replant tree basins that are free of utility conflicts and meet all tree planting guidelines
- Plant in new basins
- Dedicated Public Works planting crew
- Engage community in designing and customizing tree stakes and cross brace stickers
- 4 stakes and wire mesh will be used on all new trees

Removals

Dedicated professional tree contractor

Timeline: From the start of removal to completion, three to four months

Start date: Subject to change depending on

- public notification protests
- public hearings
- the scheduling of work with contractors and in-house crews

When scheduling, we will take into account 24th Street events such as the Carnaval Parade and Festival (May 25 & 26) and Fiesta de Las Americas (September 15)

Removals	Sidewalk Work	Replanting and new plantings
<ul style="list-style-type: none">• Trees and stump grinds• Dedicated professional tree contractor	<ul style="list-style-type: none">• Repair cracked and raised sidewalk• Enlarge/reduce tree basins• Move tree basins• Pave over unplantable basins• Dedicated Public Works cement crew	<ul style="list-style-type: none">• Replant tree basins that are free of utility conflicts and meet all tree planting guidelines• Plant in new basins• Dedicated Public Works planting crew• Engage community in designing and customizing tree stakes and cross brace stickers• 4 stakes and wire mesh will be used on all new trees

Sidewalk Work

Dedicated Public Works
cement crew

Timeline: work begins as soon as tree removal contractors finish a block

Scope of work:

- Repair cracked and raised sidewalk
- Enlarge or reduce tree basins
- Move tree basins
- Pave over unplantable basins

Removals	Sidewalk Work	Replanting and new plantings
<ul style="list-style-type: none">• Trees and stump grinds• Dedicated professional tree contractor	<ul style="list-style-type: none">• Repair cracked and raised sidewalk• Enlarge/reduce tree basins• Move tree basins• Pave over unplantable basins <p>Dedicated Public Works cement crew</p>	<ul style="list-style-type: none">• Replant tree basins that are free of utility conflicts and meet all tree planting guidelines• Plant in new basins <p>Dedicated Public Works planting crew</p> <ul style="list-style-type: none">• Engage community in designing and customizing tree stakes and cross brace stickers• 4 stakes and wire mesh will be used on all new trees

Planting

Dedicated Public Works
planting crew

Timeline: Two to three months after
removals are completed

Species:

- Red maple (Armstrong Maple) along 24th (midblock)
- Ginkgo (Maidenhair tree) on corners of 24th

Watering: Public Works will water with community
support where possible

Removals	Sidewalk Work	Replanting and new plantings	
<ul style="list-style-type: none">• Trees and stump grinds• Dedicated professional tree contractor	<ul style="list-style-type: none">• Repair cracked and raised sidewalk• Enlarge/reduce tree basins• Move tree basins• Pave over unplantable basins• Dedicated Public Works cement crew	<ul style="list-style-type: none">• Replant tree basins that are free of utility conflicts and meet all tree planting guidelines• Plant in new basins• Dedicated Public Works planting crew	<ul style="list-style-type: none">• Engage community in designing and customizing tree stakes and cross brace stickers• 4 stakes and wire mesh will be used on all new trees



Red Maple



Ginkgo

New Trees

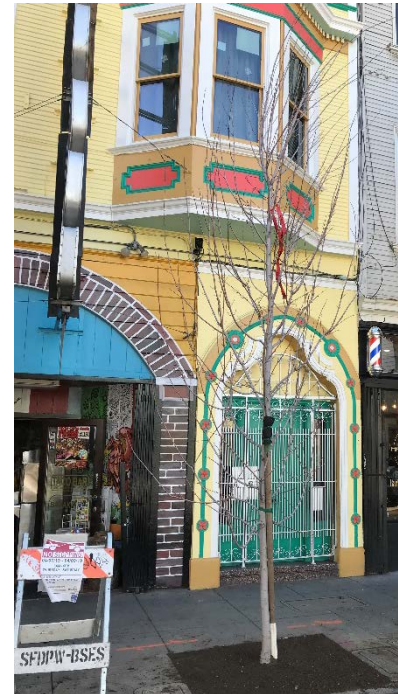
- Some new trees will be 36" boxes with 4x4 foot basins
- Some will be 24" boxes also with 4x4 foot basins



Currently empty tree basins along Lower 24th Street have been replanted (where sidewalk repair was not required)



Currently replanted basins three months later





ROOPER
36-87

PARKING

COMPACT
CAR
ONLY

313

NO PARKING
IN FRONT
OF BUS STOP
NOV 2018

FOR SALE
415.863.1775

URBANGROUP

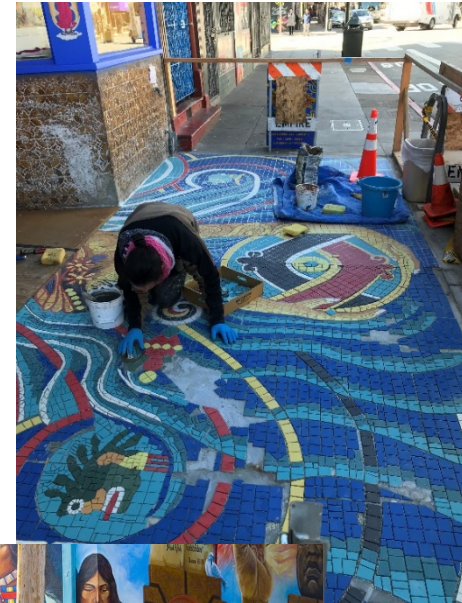
Connor Chavaria
415.853.1775

URBANGROUP

135

Community Requests

- Christmas lights
- Custom-designed tree stakes and/or crossbrace stickers



Project Commitments

- ✓ Public Works will provide bi-weekly project updates to Supervisor Ronen's Office and community while project is ongoing
- ✓ Public Works will provide dedicated contact for questions, concerns, updates, etc. while project is ongoing

Common concerns to tree removals

Aren't you supposed to be growing our Urban Forest? Why do these trees have to come out if we want more trees in San Francisco?

Our aim at Public Works is for San Francisco to have a thriving, robust urban forest.

However, while we celebrate the many important benefits that mature trees provide, and while we always look for all alternatives prior to choosing tree removal, protecting **public safety remains our Number 1 priority.**

Common concerns to tree removals

How can we trust that you will replant the trees you are removing and that you will plant them in a reasonable amount of time?

ANY time we remove a lot of trees in one area we prioritize a replacement tree replanting plan for that area.

Lower 24th Street will be prioritized for replanting given that is a major city corridor that will be losing a large amount of trees.

Common concerns to tree removals

How can you ensure the new trees won't bring their own problems?

The City is now responsible for the care and maintenance of all trees in the public right of way. The StreetTreeSF program is funded so that each and every street tree in San Francisco is cared for and inspected on a frequent, ongoing basis.

Structural pruning of these new 24th Street trees will be managed by Public Works Bureau of Urban Forestry. This will ensure the trees grow in a way that works with, and not against, the structures along 24th Street.

Moving Forward

- Look for updates from:
 - Supervisor Ronen's Office
 - Calle 24 Merchants
- Walk 24th with Public Works arborist
- sfpublicworks.org/ficustrees

Questions?



sfpublicworks.org/streettreesf
sfpublicworks.org/ficustrees

urbanforestry@sfdpw.org

(415) 554-6700