



San Francisco Curb Ramp Program: Annual Prioritization Process

Presented by:
Marci Camacho,
Curb Ramp Program Manager
Infrastructure Design and Construction Division
October 30, 2018 and
November 9, 2018

Curb Ramp Program

Outline:

- Curb Ramp Program overview
- Work accomplished in the last decade
- How to submit a curb ramp request
- Curb Ramp Annual process: criteria
- Curb Ramp Annual process: GIS mapping examples
- Discussion

Curb Ramp Program overview

San Francisco Curb Ramp Program:

- The program is a CCSF General Fund effort facilitated by Public Works and prioritized by feedback from Mayor's Office on Disability
- Public Works and the Mayor's Office on Disability work together to prioritize curb ramps to be constructed or upgraded each year:
 - Executes the design and construction of curb ramps identified through this prioritization process.

Curb Ramp Program overview, cont.

San Francisco Curb Ramp Program also:

- Manages and executes replacement of deteriorated or damaged detectable dome tiles
- Maintains the database of all ramps and potential ramp locations in the City
- Receives, investigates and responds to all curb ramp requests

Curb Ramp Program overview, cont.

- San Francisco began installing curb ramps in the early 1970s.
- San Francisco Public Works developed the City's first formal Curb Ramp Program in 1989
- Public Works undertook exhaustive field review of intersections and curb ramps. This review was completed in 2007
- San Francisco's standards for curb ramps are above and beyond the federal requirements

Curb Ramp Program overview, cont.

- 9,700 intersections / street segments
- 40,490 potential curb ramp locations
- 31,404 existing curb ramps
- 83% existing ramps have a condition score of 70 or greater (which is our acceptable standard)
- 9,086 potential locations without curb ramps

Curb Ramp Program overview, cont.

A word about our database:

- Public Works developed and maintains a (Geographical Information System) GIS map and database of curb ramp conditions citywide
- The Curb Ramp Information System database is known as CRIS and does the following:
 - identifies all locations where curb ramps do or could exist
 - identifies whether a curb ramp exists at each of those locations

Curb Ramp Program overview, cont.

- CRIS also does the following:
 - tracks the condition of all existing curb ramps (including data on approximately 40 attributes per ramp)
 - tracks curb ramp requests
 - tracks results of curb ramp investigations

Curb Ramp Program overview, cont.

- tracks when work is done and the inspection results of that work
- contains photos of all locations
- the data from CRIS is used to make GIS maps
- CRIS is updated whenever there is new data, often daily
- The data in CRIS is used in the Annual Prioritization Process

Work accomplished in the last decade

New Curb Ramps

- Current goal is 1,300 new curb ramps each year.
- From 2004 - 2017, we installed 21,380 ramps
- In other words, we exceeded the goal by 17% or 3,180 ramps over 14 years
- During the last 7 years we have exceeded our yearly goal for building curb ramps by 45%

Work accomplished in the last decade, cont.

	FY2015	FY2016	FY2017	FY2018
Curb Ramp Program	198	393	274	237

Table shows number of curb ramps built with Curb Ramp direct funding (General Fund, TDA, and Prop K) by the Curb Ramp Program during Fiscal Years: 2015, 2016, 2017 and 2018

- The number of curb ramps reported per year varies as it is dependent on administration of when the construction contract is closed out
- Of the 1,668 curb ramps installed per FY17/18, 14% with funding by the Curb Ramp Program and the remainder by other programs as part of their projects

Work accomplished in the last decade, cont.

Other agencies	FY 2015	FY 2016	FY 2017	FY 2018
Paving Program	1223	1214	931*	912
PUC	47	97	138	107
SFMTA	145	114	107	85
Other	135	151	85	327
Total	1550	1576	1261	1431

Table shows number of curb ramps built by other Agencies during Fiscal Years: 2015, 2016, 2017 and 2018

*Decrease in 2017 was due to the Paving Program funding's timing so several projects were delayed

Work accomplished in the last decade, cont.

Tile Replacement Project

- In 2012, the Curb Ramp Program added Tile Replacement to its overall program
- This ongoing project installs and/ or replaces yellow detectible dome tiles and can perform repair on existing curb ramps
- As funding has increased, the number of ramps that have had tiles replaced has increased from 39 in 2014 to 241 in 2017

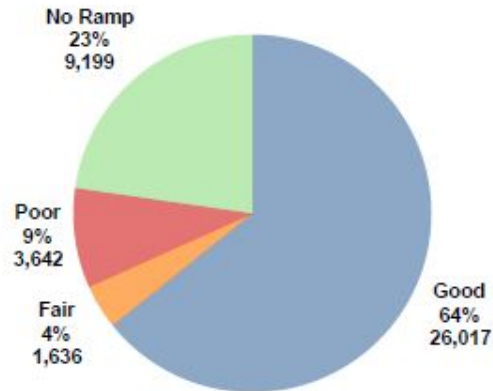
Work accomplished in the last decade, cont.

Sub-Sidewalk Basement Project

- In 2018, the Curb Ramp Program added Various Locations Curb Ramps and Sub-Sidewalk Basements to its overall program
- This ongoing project installs curb ramps in locations that have sub-sidewalk basements.
- This project is planning to design 10 locations a year that have sub-sidewalk basements. This first year the project plans to start construction at 3 locations

Curb Ramp Locations and Condition

40,494 Existing or Potential Locations



Ramp Conditions

Good - Curb ramp built recently and should be useable by most, if not all, people with disabilities.

Fair - Curb ramp is older. Many, but not all, persons with disabilities can use it.

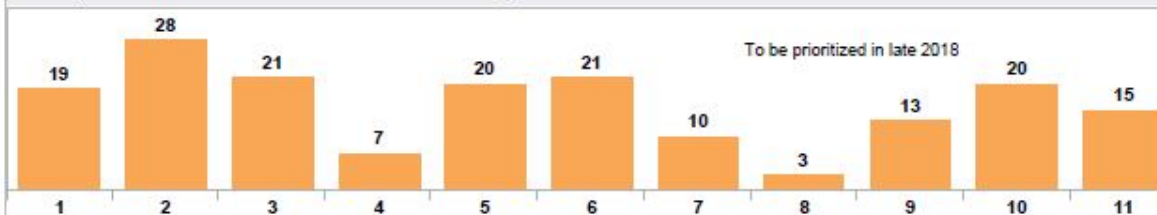
Poor - Curb ramp is old and does not meet San Francisco Public Works construction standards.

No Ramp - There is potential for a curb ramp at this location.

Work accomplished in the last decade, cont.

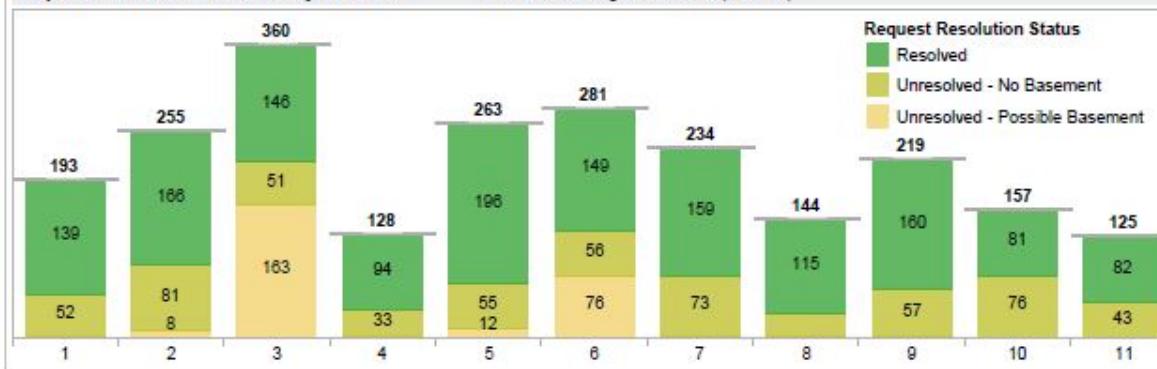
Curb Ramp Requests From The Public

179 Requests Received in Fiscal Year 2017-2018 -- by District



Request Resolution Status -- by District

FY1994-95 through FY2018-19 (To Date)



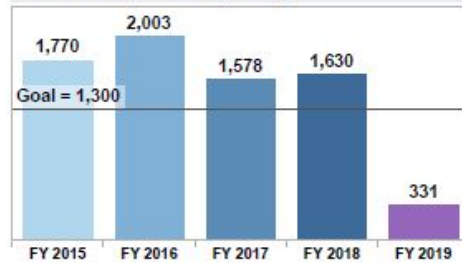
Work accomplished in the last decade, cont.

Curb Ramps Constructed

Historical Progress: Percentage of Existing or Potential Locations in Good Condition



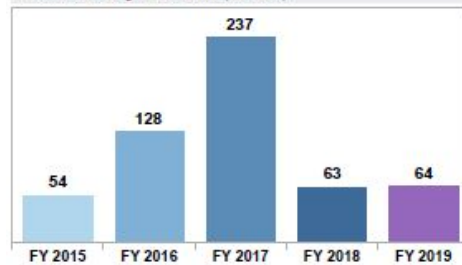
7,304 Curb Ramps Constructed by Fiscal Year
FY2014-15 through FY2018-19 (To Date)



7,304 Curb Ramps Constructed by District FY2014-15 through FY2018-19 (To Date)



540 Truncated Dome Upgrades Completed
FY2014-15 through FY2018-19 (To Date)



Truncated domes are a detectable surface indicating borders between pedestrian routes and vehicular routes, typically in the form of yellow tiles on curb ramps. These are upgraded or replaced as needed when they degrade.

How to make a Curb Ramp request

- Within San Francisco, dial 311 to make a request for a curb ramp
- Go to sf311.org to make a request on a computer
- Download SF311 Mobile App for Android or iPhone to make a request from your phone
- Contact the Mayor's Office on Disability, www.sfgov/mod and select Curb Ramps and Sidewalks, and then click on To File a Curb Ramp request online

How to make a Curb Ramp request, cont.

- Once a request has been received, the location will be inspected
- The requester will receive a response with the results of inspection - if they leave contact information. If anonymous we are unable to respond.
- The Curb Ramp Program tracks the request

How to make a Curb Ramp request, cont.

- The request will be included as part of the Prioritization process
- The Curb Ramp Program maintains the database, CRIS, to keep track of all requests and future construction

How the annual prioritization process works

- The Curb Ramp Program continues the City's process, which was started by the 2008 ADA Transition Plan, for curb ramps
- This annual process determines the priority ranking of the curb ramps to be constructed with Program funds

How the annual prioritization process works, cont.

Prioritization Criteria:

- Requests received for curb ramps are mapped in the CRIS database and categorized by disability status of the requester
- Every curb ramp in the City has a condition score in the CRIS database based on the most recent survey and /or inspection, with 1 being the worst and 100 being the best
- The highest initial priority is given to a request received from a person with a disability, where each corner of the intersection in question does not have at least one curb ramp with a condition score of 70 or higher

How the annual prioritization process works, cont.

Prioritization Criteria:

- Requests at intersections that are suspected to have a sub-sidewalk basement at one or more corners are first field confirmed. Preliminary design evaluations are then made to determine whether an alternative solution is achievable without affecting the basement structure. e.g. using a bulb out or a raised crosswalk. If determined that the only feasible solution to building a compliant curb ramp involves alterations to the sub-sidewalk basement, then that location is included in the the Sub-sidewalk Basement project list.

How the annual prioritization process works, cont.

Prioritization Criteria:

- All other prioritized requests are listed for each of the 11 supervisorial districts in San Francisco.

How the annual prioritization process works, cont.

GIS mapping:

- The data is mapped by District and preliminary scores are generated for each location.
- An excel spreadsheet is pulled for each District.
- The map location and scores are reviewed by MOD and Public Works to determine whether to place location on Annual Prioritization List and what priority.
- 12-15 locations are selected per District each fiscal year.
- Additionally, geographic equity is reviewed to take into account the various needs of the San Francisco neighborhoods within a District.

How the annual prioritization process works, cont.

- Coordination with other agencies in turn allows the Curb Ramp Program to continue building more locations on the list as the other projects have their own funding sources.
- Additionally, coordination with other Agencies and projects may allow us to further reduce our list.
- Designs are developed for curb ramps to be constructed.
- Design and construction of these locations usually takes 1 or more years.

Map legend: example



District 4 map: example

District 4: Curb Ramp Requests by Intersection for Curb Ramp Program FY 18 - 19



FOR PLANNING PURPOSES ONLY
DRAFT 10/16/2018

The curb return score is equal to the highest curb ramp condition score for that return. No condition score dot means the return is not surveyed.

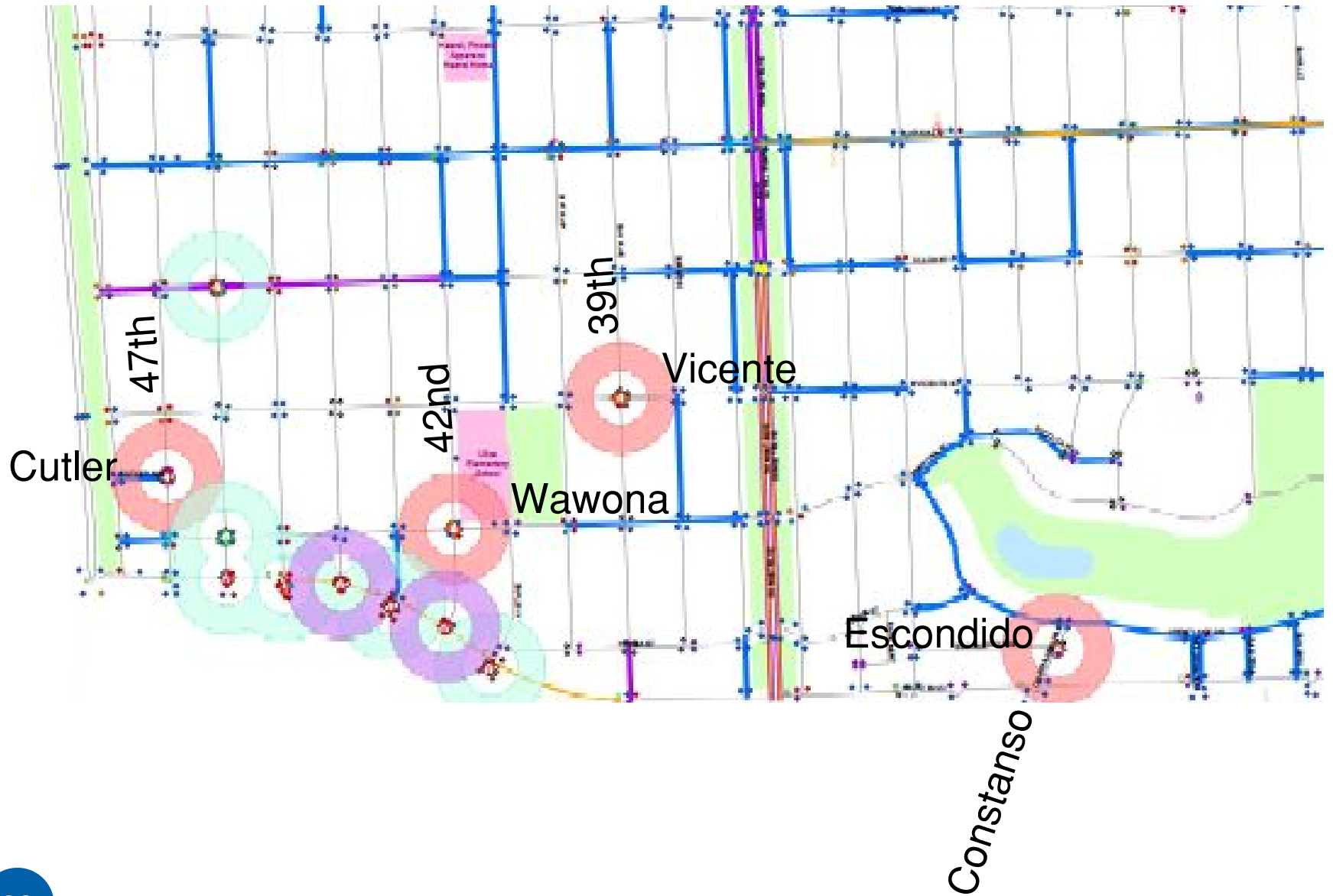
Map Origin: Public Works, Project Management

Data Review:
Request Date: Public Works through June 30, 2018 as of September 21, 2018
Curb Ramp Return Condition Score Date: Public Works as of September 21, 2018
Basement Data: Public Works, C208 as of September 5, 2016
Cultural Center & Library: BMO
Single-Room Occupancy (SRO): SF Housing Resources, Real Estate Division of SF and IHA of SF, December 9, 2015
Mental Health Facilities: Public Works, records verification completed June 2009
Hospital & Medical Facilities: Public Works as of September 2015
Police Station: Public Works as of June 21, 2017
Mental Health Facility: Public Works as of June 21, 2017
Paving Date: Public Works Paving Program as of September 21, 2016
MUNI Stop: SFMTA as of June 16, 2017
Streetscape Public Works Streetscape Program as of August 1, 2017
Commercial Zones: Dept. of Planning & Inspection, May 10, 2017
Supplemental Districts: 2012
NAE, 1983, Hayward, California, SF, PWS, 3443, Head, 1, 4, 200

0 0.25 0.5 Miles



District 4 map close-up: example



Map list by District: example

District	Location	CNN	Priority Grade	Notes
4	22nd Ave and Judah St	27411000	A+	
4	47th Ave and Cutler Ave	23494000	A+	
4	30th Ave and Judah St	27711000	A	
4	39th Ave and Vicente St	23435000	A	
4	42nd Ave and Wawona St	23433000	A	
4	Constanso Way and Escondido Ave	23336000	A	
4	Judah St and La Playa	27960000	A	
4	Judah St and La Playa	27959000	A	
4	42nd Ave and Sloat Blvd	23445000	A+	
4	44th Ave and Sloat Blvd	23450000	A+	
4	46th Ave and Judah St	27947000	A+	
4	44th Ave and Ortega St	27768000	A	
4	46th Ave and Ulloa St	23499000	A	
4,5	17th Ave and Irving St	27360000	A+	
4,7	19th Ave and Moraga St	27341000	A+	
4	22nd Ave and Lawton St	27387000	A+	
4,7	41st Ave and Sloat Blvd	23431000	A+	
4,7	43rd Ave and Sloat Blvd	23447000	A+	
4,7	45th Ave and Sloat Blvd	23453000	A+	
4,7	46th Ave and Sloat Blvd	23456000	A+	
4	46th Ave and Wawona St	23455000	B	
4,7	19th Ave and Lawton St	27343000	B+	

Other	10
CR Program	4
Not Assigned	8
	22

	A+	A	B+	B	C
Other	7	1	1	1	0
CR Program	3	1	0	0	0
Not Assigned	2	6	0	0	0
	12	8	1	1	0

Any:

Questions?

Suggestions?

Other ideas?

Topics of interest?

Point-of-Contact

Marci Camacho

Curb Ramp Program Manager

30 Van Ness, 5th Floor

San Francisco, CA 94102

marcia.camacho@sfdpw.org

Phone: 415-558-4015

Note: The data presented is as of 10/25, 2018